

ENVIROtalk

Winter 2011

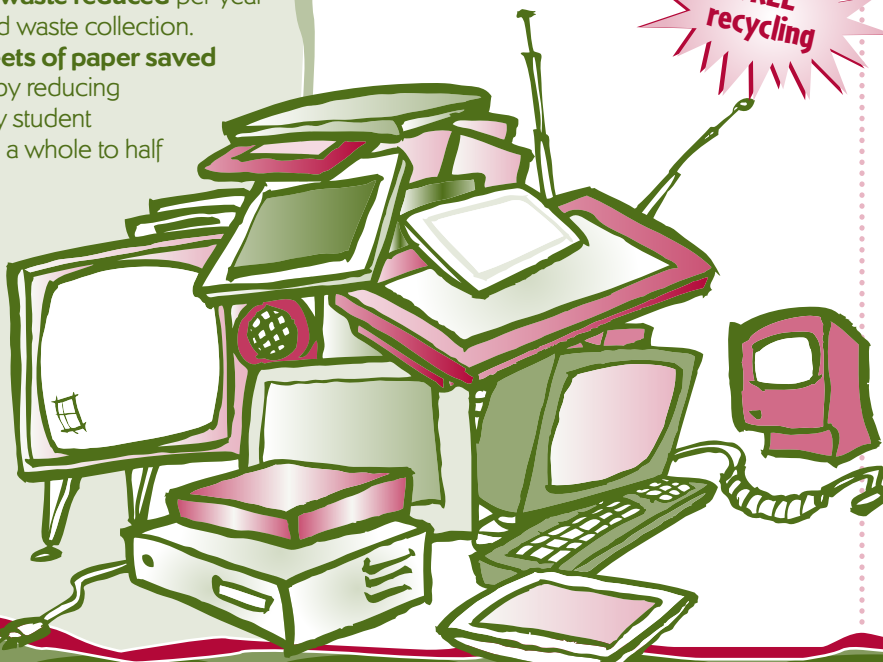
Washington-Hoyt Elementary recycles

In 2007 Washington-Hoyt Elementary School's PTA partnered with Bill Smith and John Inch, City of Tacoma Environmental Services, to promote environmental stewardship throughout their school. After enlisting the help of students, teachers and community members, it was a huge success.

Since the start of the program, they have launched recycling and waste reduction programs in the classrooms, lunchroom and office; designed PTA functions to be waste-free; organized events to promote environmental awareness; and collaborated with other Tacoma schools to promote conservation within the school district.

A look at Washington-Hoyt's waste reduction efforts

- ⚙️ **14 percent waste reduction** since 2007 by increasing recycling efforts.
- ⚙️ **2.5 tons of waste reduced** per year through food waste collection.
- ⚙️ **72,000 sheets of paper saved** since 2007 by reducing one monthly student memo from a whole to half sheet.



FREE electronics recycling

Don't trash your electronics, recycle them. Authorized collectors accept computers, monitors, tablets, e-readers, laptops and TVs for free at many locations in Tacoma and Pierce County.

Through E-Cycle Washington, electronics manufacturers are taking responsibility for the cost of recycling these products. Authorized collectors handle and recycle your electronics safely and responsibly according to preferred processing standards overseen by the Washington State Department of Ecology.

1-800-RECYCLE
www.ecyclewashington.org

Note: The Tacoma Landfill does not accept computers, monitors, tablets, e-readers, laptops or TVs.

E-Cycle Washington accepted items:

- ⚙️ Computers
- ⚙️ CPUs (towers)
- ⚙️ Laptops
- ⚙️ Computer monitors
- ⚙️ Televisions
- ⚙️ Tablets
- ⚙️ E-readers

Some locations may accept other electronics at no charge or for a fee. Contact the collector directly for details.

E-Cycle Washington locations in Tacoma:

- ⚙️ **Goodwill**
(all locations, including donation station at the Tacoma Landfill),
www.tacomagoodwill.org
- ⚙️ **Green PC**,
473-4300
- ⚙️ **Oakland Radio & TV**, 383-5277
- ⚙️ **Saint Vincent de Paul**, 474-0519
- ⚙️ **Tacoma Recycling**,
474-9559

Locations are subject to change.

Flood PREVENTION tips



- ▶ **Keep storm drains clear of leaves and debris** by using a broom or rake.
- ▶ **Dispose of leaves and yard waste properly** by composting, placing them in your brown yard waste container or taking them to the Tacoma Landfill (no extra charge for residential customers). *Please do not blow le aves into the street.*
- ▶ **Direct downspouts at least 10 feet away from your home or business.**
- ▶ **Prevent bark, dirt and other landscape materials from washing into streets and clogging drains** by using landscape barriers, such as rocks or sandbags.
- ▶ **Clear garage, basement and outdoor drains.**

www.cityoftacoma.org/flood

Report stormwater flooding or sewage backups:
(253) 591-5585

Street maintenance, street flooding, slides:
(253) 591-5495

SAVOR the taste of SUMMER all year long

Indoor gardening doesn't have to be limited to orchids, ferns and plastic plants.

Some edibles to try growing indoors:

- Lettuce
- Spinach
- Tomatoes (small-fruit varieties)
- Peppers (small-fruit varieties)
- Radishes
- Eggplant
- Parsley
- Beans
- Sage
- Chives
- Cilantro
- Thyme

What you'll need:

- **Light:** A sunny, south-facing window works well. Your veggies (especially tomatoes and peppers) will have a better chance of flourishing if you provide some supplemental light, such as a combination warm-white/cool-white fluorescent lamp.
- **Containers:** Make sure containers are big enough to support your plants when fully

grown, can hold soil without spilling, have adequate drainage and have never held materials that would be toxic to plants or people.

- **TAGRO Potting Soil:** Sold by the bag in Tacoma at Portland Avenue Nursery, GardenSphere and Gray Lumber, or shovel a cartful (4 cubic feet) for \$5 at the TAGRO Office.

Open year-round for pickup or delivery
Monday-Friday, 8 a.m. to 3 p.m.
2201 Portland Ave., Gate 6,
Tacoma

www.tagro.com
(253) 502-2150

TAGRO gift certificates available at the TAGRO Office!



2012 RESOURCE GUIDE

Please keep this as a reference for the upcoming year

Solid Waste Management

www.cityoftacoma.org/solidwaste

General Solid Waste questions 591-5543
Recorded information line 565-5955

Call-2-Haul 573-2468 www.cityoftacoma.org/call2haul

Garbage 591-5543 www.cityoftacoma.org/garbage

Hazardous waste 591-5418 www.cityoftacoma.org/hazwaste

Landfill scalehouse 593-7724

Recycling 591-5543 www.cityoftacoma.org/recycle

Yard waste 591-5543 www.cityoftacoma.org/yardwaste

Surface Water Management Wastewater Management

www.cityoftacoma.org/surfacewater

www.cityoftacoma.org/wastewater

General Surface Water and
Wastewater questions 591-5588
Billing questions 502-2100

Sewer backups,
Street flooding &
Street sweeping 591-5585 www.cityoftacoma.org/flood
www.cityoftacoma.org/streetsweeping

Leaf disposal www.cityoftacoma.org/leaves

TAGRO 502-2150 www.tagro.com

Water pollution hotline 383-2429

Environmental Services

www.cityoftacoma.org/environmentalservices

(Solid Waste, Surface Water, Wastewater)

EnviroHouse
(green building/natural
landscape exhibit) 573-2426 www.cityoftacoma.org/envirohouse

Email listserv www.cityoftacoma.org/environews

www.twitter.com/EnviroTalk
www.twitter.com/TAComaGROw
www.twitter.com/CityOfTacoma

Facebook www.facebook.com/cityoftacoma

When calling any of the utilities, please have your account number available. It is the first thing you will be asked and allows us to quickly access your information. Your account number is located at the top of your utility bill.

EnviroKIDS - NIFTY NAPKIN RINGS

Spruce up your holiday table and your reusable cloth napkins with these fun napkin rings. Using odds and ends found around the house, you can create custom napkin rings for any occasion.

What you need:

- 1 cardboard wrapping paper tube or several cardboard paper towel tubes
- Newspaper or scraps of wrapping paper
- Cool-temperature glue gun or glue stick
- Double-stick tape
- Scissors
- Decorating items: ribbon, buttons, beads, caps, beans, etc.

Instructions:

1. Cut the cardboard tube (s) to the width you want your napkin rings to be.
2. Paint the tubes with glue and wrap with paper or ribbon.
3. Add any decorative items to the napkin rings.
4. Let the napkin rings dry and then slide them on your reusable napkins.

www.cityoftacoma.org/envirokids



DID YOU KNOW?

... that grease, fats, oils and gravy that go down your sink, toilet or garbage disposal can stick to the inside of your drain and sewer pipes and cause unpleasant, messy and expensive sewer backups?

Collect grease from pans into a jar or can, let cool, seal and place in the trash.

Recycle large amounts of cooking oil, such as from deep-fat fryers, for no additional charge at the Household Hazardous Waste Facility, located at the Tacoma Landfill, 3510 S. Mullen St.

www.cityoftacoma.org/grease

Wastewater: (253) 591-5588
Household Hazardous Waste: (253) 591-5418

EcoFind

Give an e-magazine as an ecofriendly gift

Give friends and family the gift of green with a subscription to their favorite magazine on their e-reader. Not only does this reduce the need for paper and recycling, but it also reduces the use of resources needed to obtain traditional gifts. Best of all, the magazine gets delivered to their wireless device almost immediately.

www.cityoftacoma.org/wastefree

4

GREENER CLEANER

A greener shoe polish

Ingredients:

- Olive oil
- Lemon juice
- 2 clean, soft rags

Directions:

1. Mix 1 part lemon juice with 2 parts olive oil in a small dish.
2. Use a clean, soft rag to rub a small amount of the polish mixture into your shoes, allowing it to soak in for a few minutes.
3. Buff with another clean, soft rag.

Be sure to apply only to clean, dry shoes that can be polished.

www.cityoftacoma.org/greenercleaners



2012 rates update

Solid waste, surface water and wastewater utility rates will increase by \$3.31 per month for the typical City of Tacoma residential customer in 2012.

A typical customer has a 30-gallon garbage can, lives on a 7,000-square-foot lot and uses 700 cubic feet of water from Tacoma Water each month.

What do you get for the money?

Here are highlights (not a complete list of services):

Solid waste:

- ▶ Collection of garbage, recycling and yard waste
- ▶ Programs such as Call-2-Haul and household hazardous waste disposal
- ▶ Cleanups on private property (nuisance cleanups) and in neighborhoods
- ▶ Operation of the recovery and transfer center at the landfill
- ▶ Transportation and disposal of waste material at a landfill

Surface Water:

- ▶ Operation and maintenance of 500+ miles of stormwater pipe and 22,000+ storm drains/catch basins, four pump stations and numerous detention ponds
- ▶ Efforts to control urban flooding
- ▶ Water pollution prevention programs such as street sweeping
- ▶ Stormwater system inspections and monitoring
- ▶ Restoration of sites affected by industry and urbanization

Wastewater:

- ▶ Operation and maintenance of a 700-mile network of underground pipes, 48 pumping stations and two major wastewater treatment facilities
- ▶ Wastewater carried from homes and businesses to treatment plants
- ▶ Treatment of raw wastewater so it can be released without polluting Commencement Bay

For more information on rates, ways to cut costs, and bill payment assistance programs, see:

www.cityoftacoma.org/esrates

Solid Waste: (253) 591-5543

Wastewater/Surface Water: (253) 502-2100

CURBSIDE RECYCLING

Here is a general list of the most common accepted recyclable items in the curbside service. Not all recyclable items are pictured. Please rinse out bottles, jugs, jars, tubs, cans and other items that may have food residue. Remove all caps and lids and place them in the garbage.

For a more complete list of what is and isn't recyclable, go to www.cityoftacoma.org/recyclingreview.

Big blue container

Aluminum & tin



- Aerosol cans
- Aluminum cans
- Foil
- Tin
- Trays

Paper



- Newspaper & inserts
- Mixed paper
- Phone books, magazines, catalogs
- Shredded paper
Place inside bag and secure the top

Glass & battery bin



Glass bottles & jars (clear, brown and green)

Boxes & cardboard



- Boxes
- Corrugated cardboard
- Plastic-coated cartons

Plastics



- Bags
Place inside one bag and secure the top
- Bottles
- Jars
- Jugs
- Tub

Big brown container

Yard waste



Leaves, grass clippings and small branches

Food waste



Breads, grains, pasta, cereal



Fruit and vegetables



Meat, poultry, seafood



Dairy and eggs (including shells)



Leftovers/kitchen scraps (including coffee grounds/filters)

Administration – 8 a.m.-5 p.m., Monday-Friday
(closed all major government holidays)

General Information (Solid Waste) (253) 591-5543
Call-2-Haul (8 a.m.-4:30 p.m.) (253) 573-2468
Information Line (24-hour recorded message only) (253) 565-5955

www.cityoftacoma.org/solidwaste

Landfill Services – 8 a.m.-6 p.m., daily
(closed 4 p.m. Christmas Eve)

Closed: New Year's Day, Fourth of July, Thanksgiving Day,
Christmas Day

Household Hazardous Waste Facility (253) 591-5418
Scalehouse (253) 593-7724

Please tear off and save

2012 Recycling and Yard/Food Waste collection schedule

January

S	M	T	W	T	F	S
1	2	3	4	5	6	7
8	9	10	11	12	13	14
15	16	17	18	19	20	21
22	23	24	25	26	27	28
29	30	31				

February

S	M	T	W	T	F	S
			1	2	3	4
5	6	7	8	9	10	11
12	13	14	15	16	17	18
19	20	21	22	23	24	25
26	27	28	29			

March

S	M	T	W	T	F	S
				1	2	3
4	5	6	7	8	9	10
11	12	13	14	15	16	17
18	19	20	21	22	23	24
25	26	27	28	29	30	31

April

S	M	T	W	T	F	S
1	2	3	4	5	6	7
8	9	10	11	12	13	14
15	16	17	18	19	20	21
22	23	24	25	26	27	28
29	30					

May

S	M	T	W	T	F	S
		1	2	3	4	5
6	7	8	9	10	11	12
13	14	15	16	17	18	19
20	21	22	23	24	25	26
27	28	29	30	31		

June

S	M	T	W	T	F	S
					1	2
3	4	5	6	7	8	9
10	11	12	13	14	15	16
17	18	19	20	21	22	23
24	25	26	27	28	29	30

July

S	M	T	W	T	F	S
1	2	3	4	5	6	7
8	9	10	11	12	13	14
15	16	17	18	19	20	21
22	23	24	25	26	27	28
29	30	31				

August

S	M	T	W	T	F	S
			1	2	3	4
5	6	7	8	9	10	11
12	13	14	15	16	17	18
19	20	21	22	23	24	25
26	27	28	29	30	31	

September

S	M	T	W	T	F	S
						1
2	3	4	5	6	7	8
9	10	11	12	13	14	15
16	17	18	19	20	21	22
23	24	25	26	27	28	29
30						

October


S	M	T	W	T	F	S
	1	2	3	4	5	6
7	8	9	10	11	12	13
14	15	16	17	18	19	20
21	22	23	24	25	26	27
28	29	30	31			


November

S	M	T	W	T	F	S
				1	2	3
4	5	6	7	8	9	10
11	12	13	14	15	16	17
18	19	20	21	22	23	24
25	26	27	28	29	30	

December

S	M	T	W	T	F	S
						1
2	3	4	5	6	7	8
9	10	11	12	13	14	15
16	17	18	19	20	21	22
23	24	25	26	27	28	29
30	31					

 = set out garbage (green) and recycling (blue) containers

 = set out only yard waste (brown) container

This calendar, specific to the area of the city in which you live, shows the days you set your garbage, recycling and yard/food waste containers. Continue setting out your recycling and yard waste containers on alternating weeks. Always set out your garbage with your blue recycling container. Your brown yard waste container is set out on its own.

www.cityoftacoma.org/pilot

Holiday Collection Schedule		
	If your regular pickup day is...	Your pickup day will be...
Christmas Day 2011	On regular schedule	
New Year's Day 2012	On regular schedule	
Fourth of July 2012	Wednesday, July 4	Thursday, July 5
	Thursday, July 5	Friday, July 6
	Friday, July 6	Saturday, July 7
Thanksgiving 2012	Thursday, Nov. 22	Friday, Nov. 23
	Friday, Nov. 23	Saturday, Nov. 24
Christmas Day 2012	Tuesday, Dec. 25	Wednesday, Dec. 26
	Wednesday, Dec. 26	Thursday, Dec. 27
	Thursday, Dec. 27	Friday, Dec. 28
	Friday, Dec. 28	Saturday, Dec. 29

Pickup for all other holidays is on regular schedule.

CALL & WE'LL HAUL... YOUR OVERSIZED JUNK



Get rid of large useless household items with Call-2-Haul, a curbside and self-haul bulk disposal service available by appointment to Solid Waste Management single-family residential customers at no additional charge. Qualified customers are allowed two visits per calendar year.

Each visit, you're allowed:

- ☒ Up to three large items
- ☒ Up to 15 lightweight boxes or bags of smaller household junk

Schedule an appointment (curbside or self-haul):

(253) 573-2468

(8 a.m. - 4:30 p.m., weekdays)

www.cityoftacoma.org/call2haul

Before you throw something in the garbage, ask yourself if it can be reused, repaired or donated. Find more information at www.cityoftacoma.org/reuse.

JUST ASK: Where do you dump the water?

When you hire a carpet cleaning, painting or pressure-washing service for your home, please make sure your contractor has a plan for keeping dirty water out of storm drains.

Disposing of dirty water down storm drains is illegal and is toxic to aquatic life. (Even biodegradable soaps are toxic to fish.)

Proper practices:

- ☒ Dispose of dirty water down the sink or toilet, store it temporarily for proper disposal, or recycle it. Water from car washing or house washing can be diverted to a planted area at your home.
- ☒ Properly dispose of chemicals and hazardous materials.
- ☒ If chemicals, paints, cleaners or other liquids are spilled, use kitty litter, sawdust or commercial absorbent products to absorb spilled

liquids, then sweep it up, bag it and dispose of it in the garbage.

- ☒ When working in a driveway or parking lot, sweep up debris and dispose of in the garbage. Remember: Only rain down the drain.

www.cityoftacoma.org/mobilebiz

(253) 591-5588



EnviroTalk

in this issue

- ❁ Indoor gardening with TAGRO page 2
- ❁ 2012 rates update..... page 4
- ❁ Curbside recycling - what goes in page 5
- ❁ 2012 collection schedule..... page 6

Envirotalk@cityoftacoma.org
www.twitter.com/EnviroTalk
(253) 591-5051

Recycling & yard waste
schedule & stickers inside!



Recycled and recyclable
Printed with soy-based ink

PW 512005 016 1111 a
(PILOT - South)



Public Works
Environmental Services
747 Market Street, Room 408
Tacoma, Washington 98402-3769

PRSR STD
U.S. POSTAGE PAID
TACOMA, WA
PERMIT NO. 2

CHRISTMAS TREE recycling

Remember: No separate bundles accepted

Yard waste container

Cut your Christmas tree (unflocked, undecorated, no stand) in small enough sections to fit inside your yard waste container so the lid closes flat. Trees left outside the container are not accepted.

Landfill drop-off

Single-family residents may recycle their unflocked, undecorated tree without stand at the Tacoma Landfill (3510 S. Mullen St.) Dec. 26 through Jan. 22. The landfill is open from 8 a.m. to 6 p.m. daily (closed Christmas Day and New Year's Day).

Dispose of flocked trees in the garbage.

(253) 591-5543



If you need this information in an alternative format, please call (253) 591-5051. People with hearing or speech impairments may contact us through Washington Relay Services, 1-800-833-6388 (TTY or ASCII).