



CITY OF TACOMA
Public Works Engineering Division

ADDENDUM NO. 01

DATE: September 16, 2022

REVISIONS TO:
Request for Bids Specification No. PW22-0295N
Speed Limit Changes

NOTICE TO ALL BIDDERS:

This addendum is issued to clarify, revise, add to or delete from, the original specification documents for the above project. This addendum, as integrated with the original specification documents, shall form the specification documents. The noted revisions shall take precedence over previously issued specification documents and shall become part of this contract.

REVISIONS TO THE SUBMITTAL DEADLINE:

The submittal deadline remains the same.

REVISIONS TO THE PLANS:

Please remove Appendix D in its entirety and replace with Appendix D labeled Addendum 01.

NOTE: Acknowledge receipt of this addendum by initialing the corresponding space as indicated on the signature page. Vendors who have already submitted their bid/proposal may contact the Purchasing Division at 253-502-8468 and request return of their bid/proposal for acknowledgment and re-submittal. Or, a letter acknowledging receipt of this addendum may be submitted in an envelope marked Request for Bids Specification No. PW22-0259N Addendum No. 1. The City reserves the right to reject any and all bids, including, in certain circumstances, for failure to appropriately acknowledge this addendum.

cc: Josh Lauer, Public Works Engineering

ADDENDUM 01

APPENDIX D

SIGN POST MOUNTING SPECIFICATION

ADDENDUM 01


Perforated Square Steel Sign Posts and Anchors

30" HD 2 1/2" x 2 1/2" x 30" - 7 Gauge anchors

Specifications

- **Material.** Steel posts conform to ASTM A653, grade 50 standard specification for steel sheet, zinc-coated (galvanized) or zinc-iron alloy-coated (galvannealed) by the hot-dip process.
- **Finish.** The galvanized portion of the post conforms to A STM A653, G90, structural quality, grade 50. The corner weld is zinc coated after scarfing. The galvanized post has a minimum of 0.5 millimeters of clear acrylic polymer coating applied as a rust preventative.
- **Holes.** All four sides feature holes 7/16" in diameter, ($\pm 1/64$ ") on one-inch centers through the entire length of the post. Holes are on the centerline of each side, in alignment with and opposite of each other directly and diagonally.
- **Telescoping properties.** Finished posts are straight and have a smooth, uniform finish. All consecutive sizes of square tubes telescope freely and for not less than ten feet of their length without the need to match any particular face to any other face. All holes and ends are free from burrs.

NOMINAL OUTSIDE DIMENSION	AVAILABLE GAUGES				REFERENCE No.
	7 (.180")	10 (.134")	12 (.109")	14 (.083")	
1-3/4" x 1-3/4"			X	X	ZPT175
2" x 2"			X	X	ZPT200
2" x 2" EZ-Out™				X	ZPTEZ200
2-1/4" x 2-1/4"			X	X	ZPT225
2-1/2" x 2-1/2"		X	X		ZPT250
2-1/2" non-perforated	X				ZPTS200
3" non-perforated	X				ZPTS300



Anchors



Heavy-duty anchor.



Two-piece anchor.



Surface mount base anchor.



Slip base system. Available in 8" and 10" triangular slip bases.

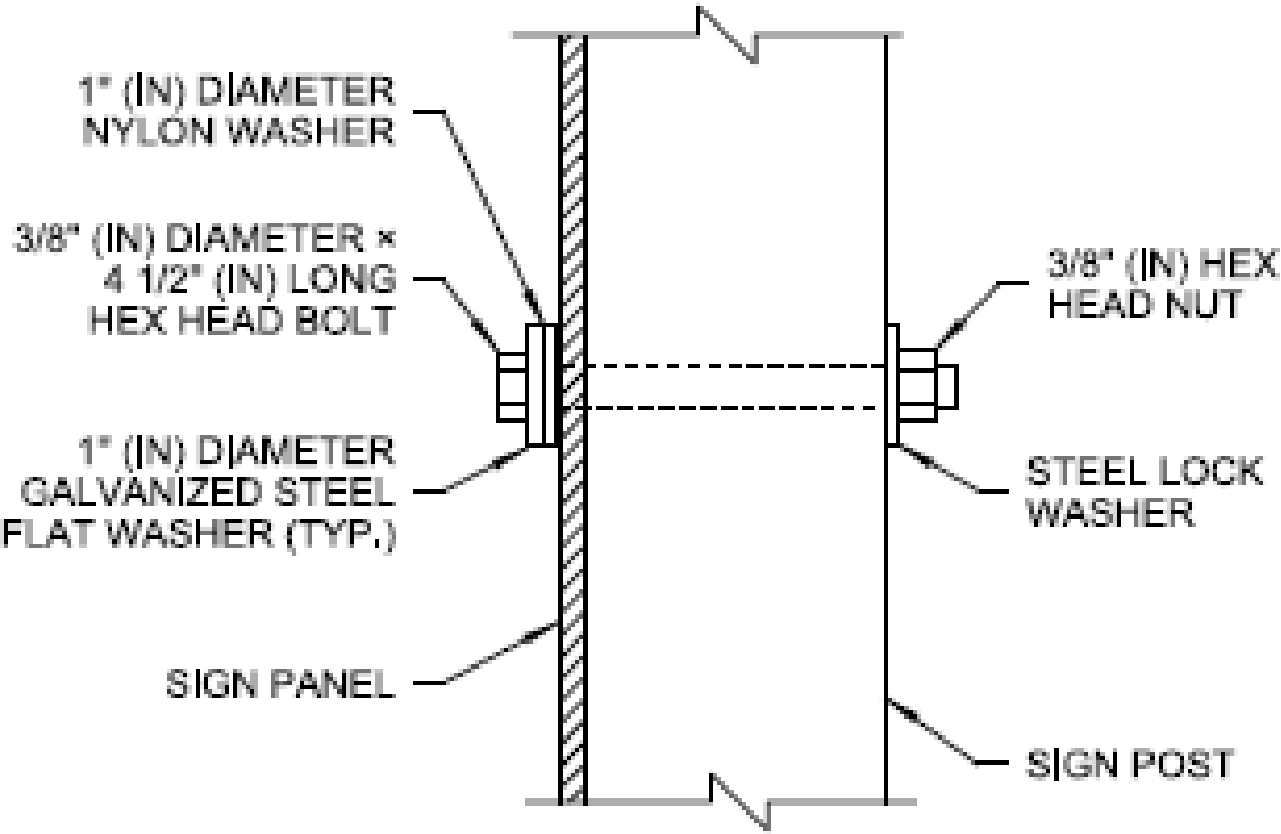
POST SIGN MOUNTING

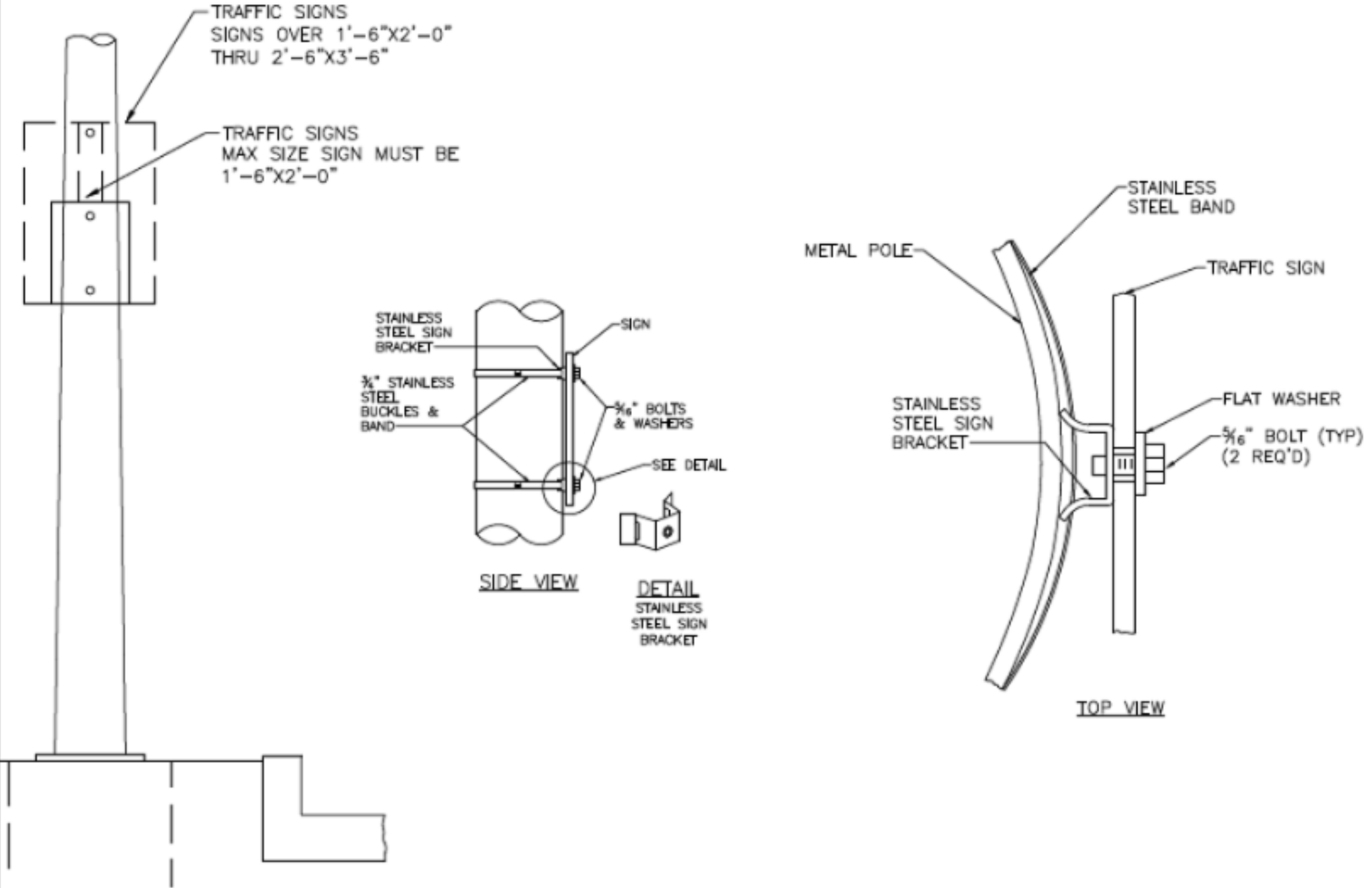
ADDENDUM 01

WINDLOAD FOR SQUARE TUBE POSTS AT 90 MPH					
POSTS			MAXIMUM XYZ		
			1-POST	2-POST	3-POST
* 3" SOLID POST	30"	7-GAGE	471	942	1413
★ SLIP BASE REQUIRED (UNLESS BEHIND BARRIER)					
(MAXIMUM 3 SLIP BASES ALLOWED IN 7' SPAN)					

NOTES:

- 1. 30" (IN) 2 1/4" (IN) 7-gage for our anchors
- 2. No slip base with corner bolts 5/16" (IN)
- 3. 5/16" (IN) flat-washer
- 4. 5/16" (IN) nuts.
- 5. Steel Drive Rivet 3/8" X 5/8" (1" (IN) head diameter)
- 6. ALL HARDWARE TO BE STAINLESS STEEL





OCS, SIGNAL, OR STREET LIGHT SIGN MOUNTING

NTS

1

L20-CMP117

- NOTES:
1. ON POLES FILLED WITH OR MADE FROM CONCRETE USE 5/16"x2 1/2" MIN STUD BOLT ANCHORS WITH HEX NUT.
 2. FOR SIGNS OVER 2'-6"X3'-6" MOUNT SIGNS USING UNIVERSAL SIGN BRACKET AS NOTED IN WSDOT STANDARD PLAN G-30.10.
 3. FOR DARK COLORED POLES PAINT BAND TO MATCH POLE.
 4. ALL HARDWARE TO BE STAINLESS STEEL.



All Steel Drive Rivet

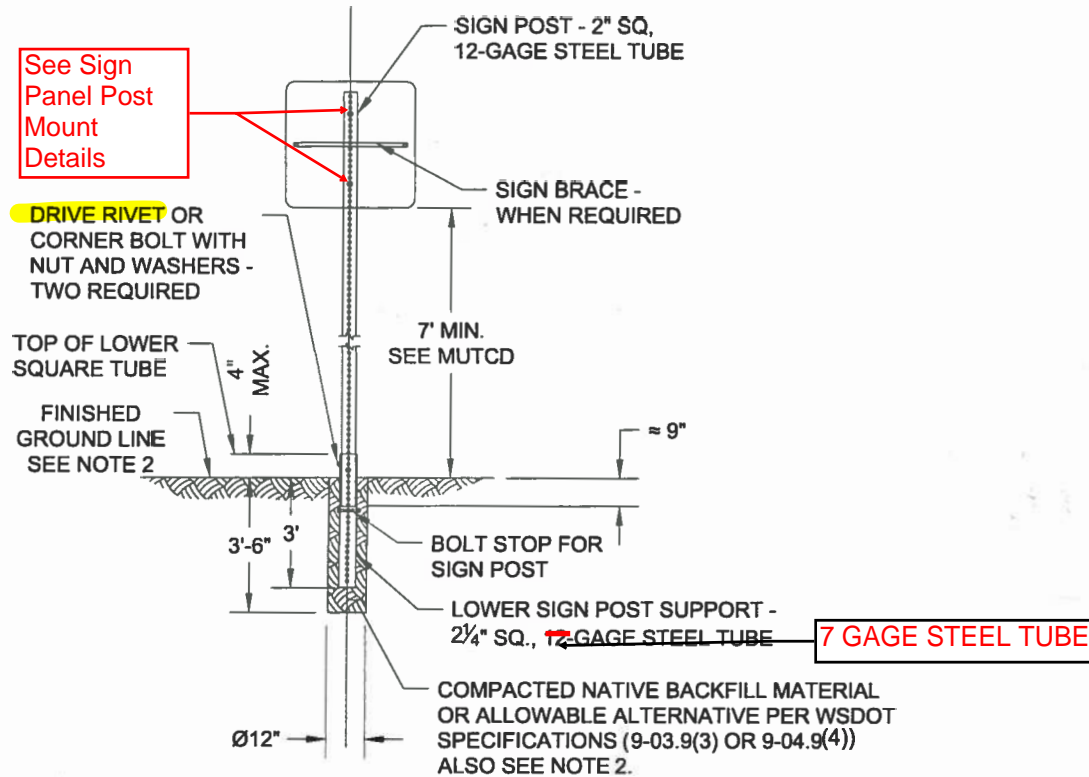
Product Description

Drive Rivet

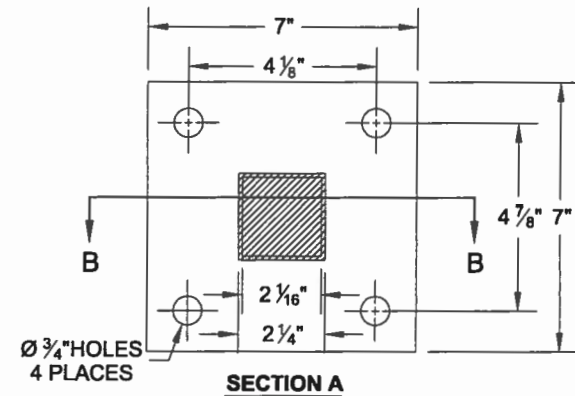
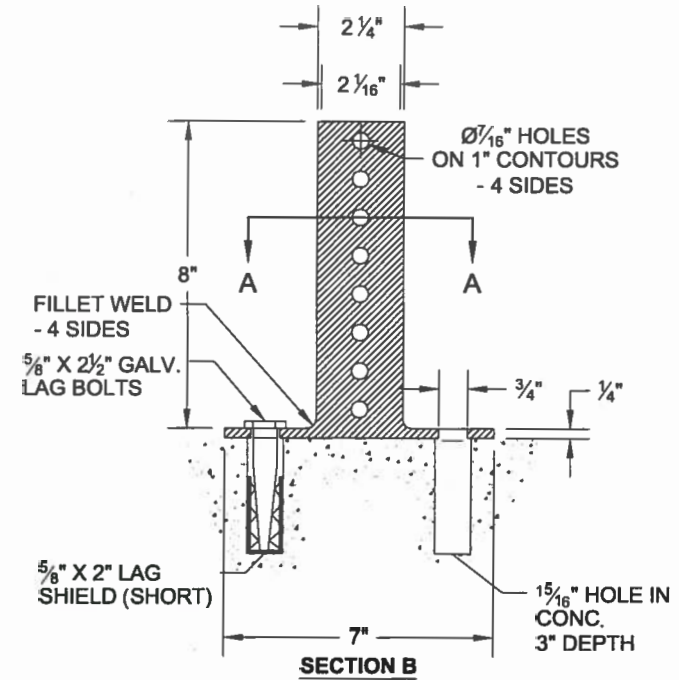
- Size: 3/8" X 5/8"
- Large 1" head diameter
- Material: Steel

NOTES:

1. Surface mounting of sign posts, especially within traffic islands or medians, is only allowable with special authorization from the city's traffic engineering group, (Exception: Surface mounting of flexible post object markers within islands or medians is permitted).
2. If finished ground line is a hard surface, then compacted native backfill material shall be concrete with the top of foundation being smooth, dense, and uniform to finished ground line.



**SIGN SUPPORT DETAIL
FOR STEEL SIGN POST**



**BASE PLATE DETAIL FOR
STEEL SIGN POST SURFACE MOUNTING
(SEE NOTE 1)**

DCS

PUBLIC WORKS

NA

TACOMA POWER

REVIEWED BY

ENVIRONMENTAL
SERVICES

TACOMA WATER



APPROVED FOR PUBLICATION

CITY ENGINEER

DATE

CITY OF TACOMA

SIGN POST
INSTALLATION

STANDARD PLAN NO.

SU-34