



City of Tacoma

Tacoma Water

ADDENDUM NO. 1

DATE: 2/24/23

REVISIONS TO:

**Request for Bids Specification No. TW23-0023N
Portland Ave Sleeve Valve**

NOTICE TO ALL BIDDERS:

This addendum is issued to clarify, revise, add to or delete from, the original specification documents for the above project. This addendum, as integrated with the original specification documents, shall form the specification documents. The noted revisions shall take precedence over previously issued specification documents and shall become part of this contract.

REVISIONS TO THE SUBMITTAL DEADLINE:

The submittal deadline remains the same.

REVISIONS TO THE GENERAL INFORMATION AND REQUIREMENTS:

Revise the Request for Bids Project Scope to read the work of this project shall include the design, manufacture, and delivery of one 18" x 20" x 20" in-line horizontal multi-jet sleeve valve, fixed element energy dissipator, and electric actuator.

Revise Background Section 1 to read the work of this project Replace first paragraph of Paragraph 1. Background with the following statement: The City of Tacoma (City) / Tacoma Public Utilities (TPU) is soliciting bids to establish one or more contracts with qualified vendors to fulfill the City's needs for the design, manufacture, and delivery of one 18" x 20" x 20" in-line horizontal multi-jet sleeve valve, fixed element energy dissipator, and electric actuator. Work performed under this contract excludes any services as defined by [RCW 18.43.020](#). Contract(s) will be awarded to the lowest responsive and responsible bidder(s) based on price, product quality and availability.

REVISIONS TO THE TECHNICAL SPECIFICATIONS:

Revise 40 05 73 Horizontal Multi-Jet Sleeve Valves Section 1.1.A to read the Work of this Section shall include the design, manufacture, and delivery of one 18" x 20" x 20" in-line horizontal multi-jet sleeve valve, fixed element energy dissipator, and electric actuator which shall be furnished by the Owner to a contractor for installation under a separate contract.

Revise 40 05 73 Horizontal Multi-Jet Sleeve Valves Section 2.3.A to read the sleeve valve body assembly shall consist of two carbon steel weldments, comprising the inlet and outlet bodies. The two body weldments shall be connected at a flanged cylindrical body section with an inner annular chamber formed by the body shell.



City of Tacoma

The flange on the upstream end of the main body section shall be 18" ANSI Class 250, nominal diameter process connection and the flange on the downstream end of the main body section shall have a 20" AWWA C207, Class D, flat-faced nominal diameter process connection. Sealing surfaces of the flange shall be delivered bare with Rust-veto corrosion preventing coating.

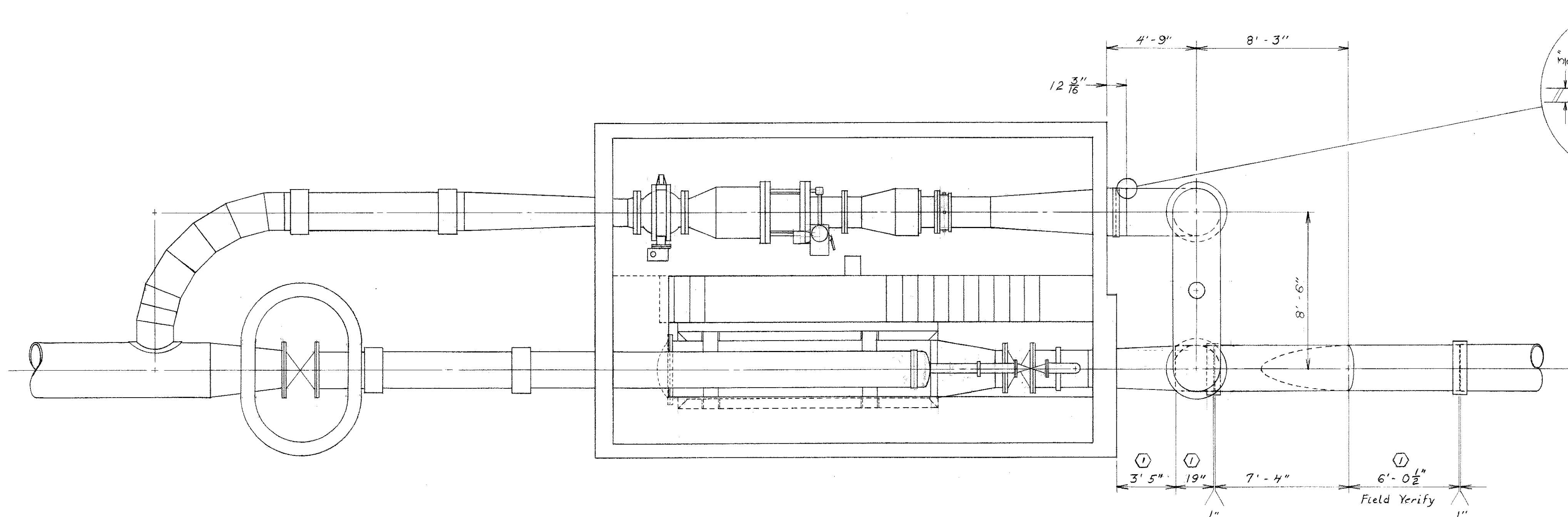
Add Appendix C Reference Drawings as marked Addendum No. 1

NOTE: Acknowledge receipt of this addendum by initialing the corresponding space as indicated on the signature page. Vendors who have already submitted their bid may contact the Purchasing Division at 253-502-8468 and request return of their bid for acknowledgment and re-submittal. Or, a letter acknowledging receipt of this addendum may be submitted in an envelope marked Request for Bids Specification No. TW23-0023N Addendum No.1. The City reserves the right to reject any and all bids, including, in certain circumstances, for failure to appropriately acknowledge this addendum.

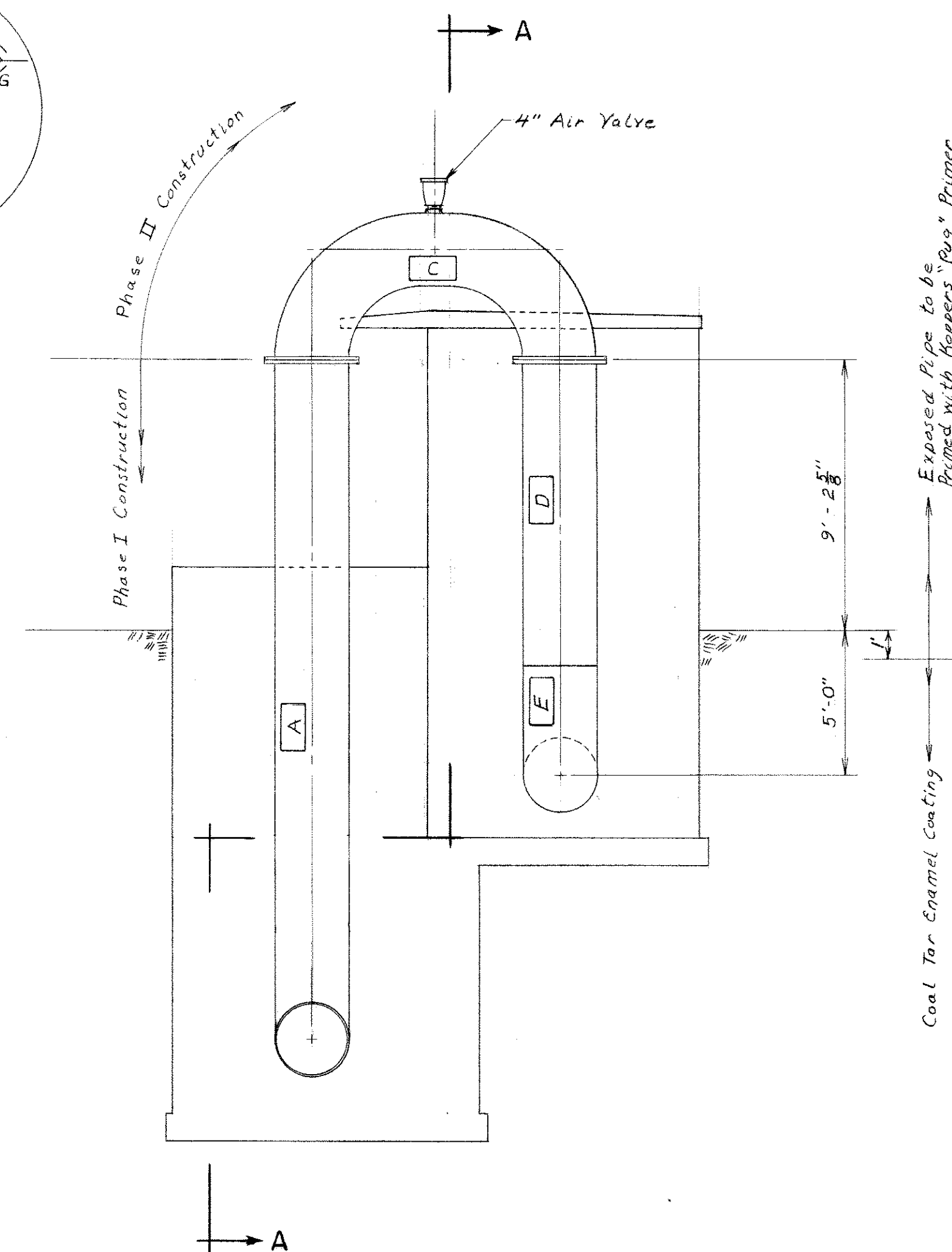
cc: Michel Peloquin, P.E., Tacoma Water

APPENDIX C

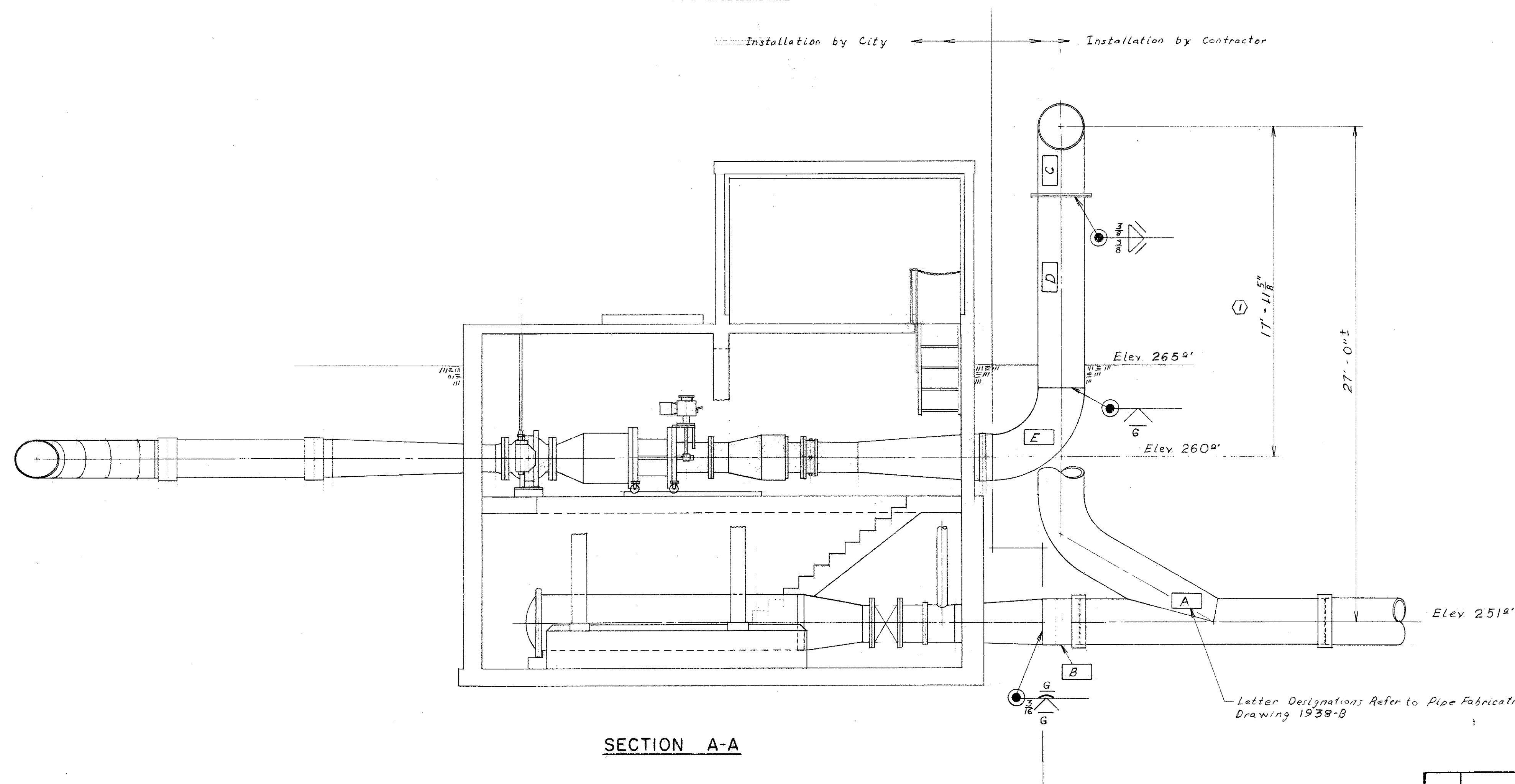
Reference Drawings



PLAN SECTION



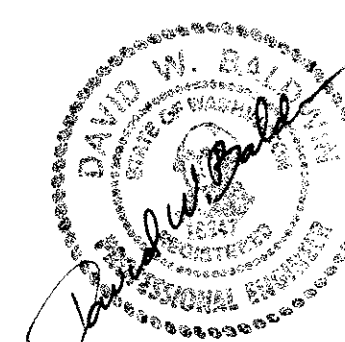
END VIEW

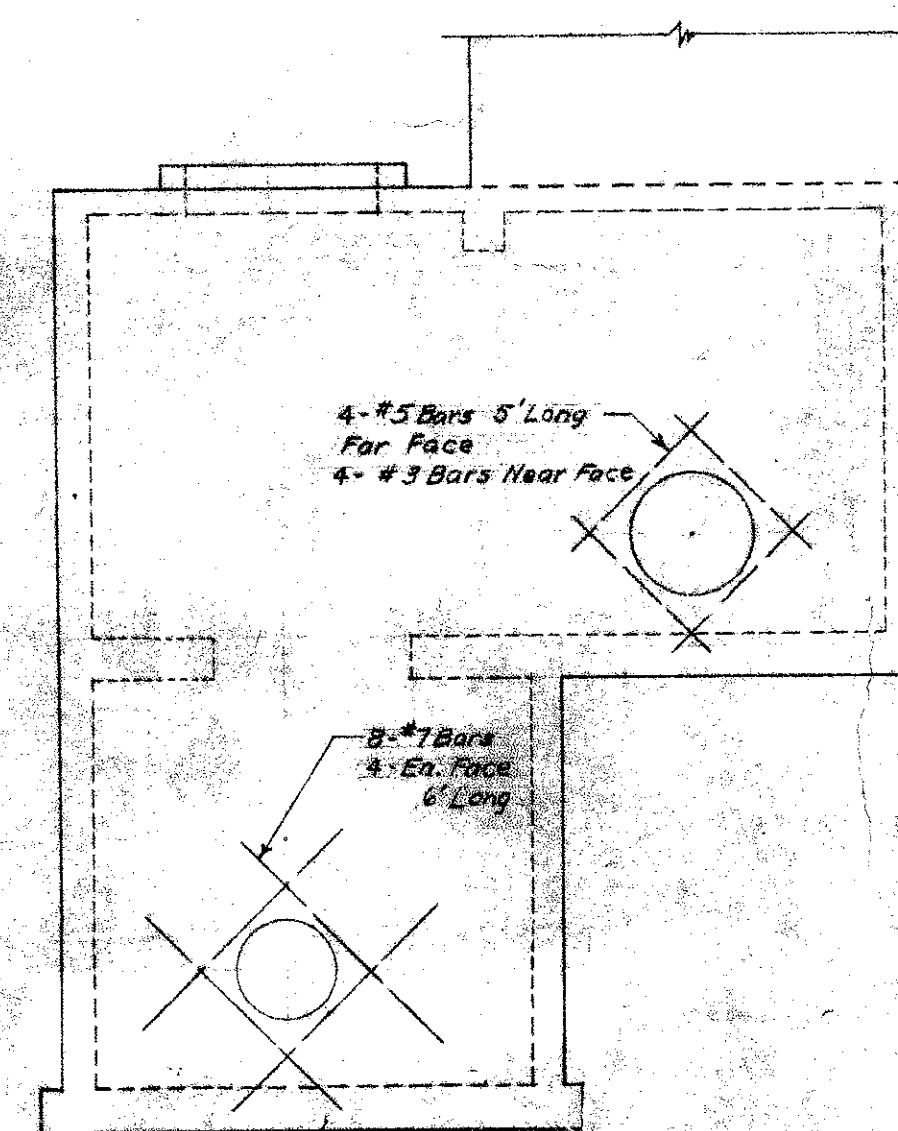
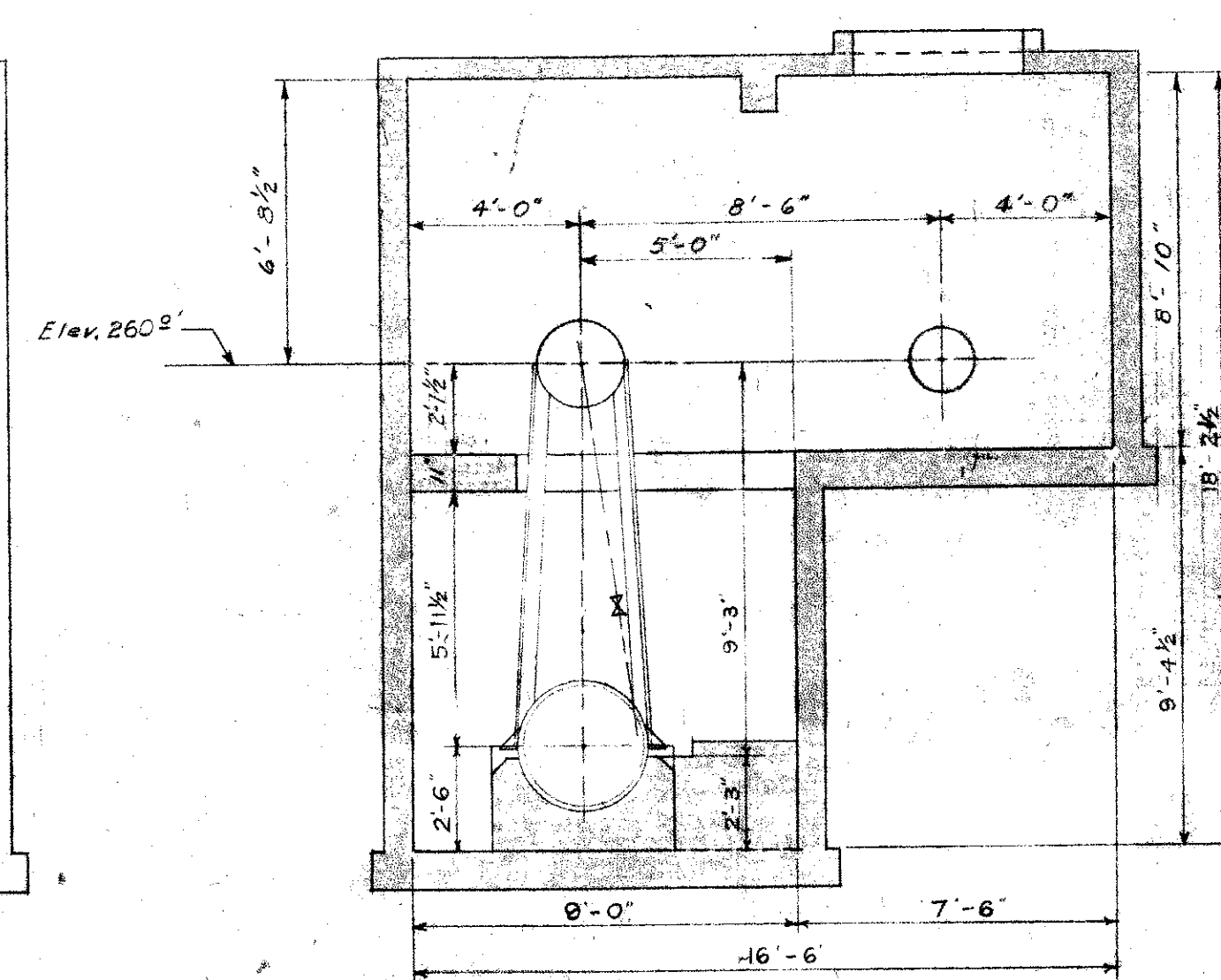
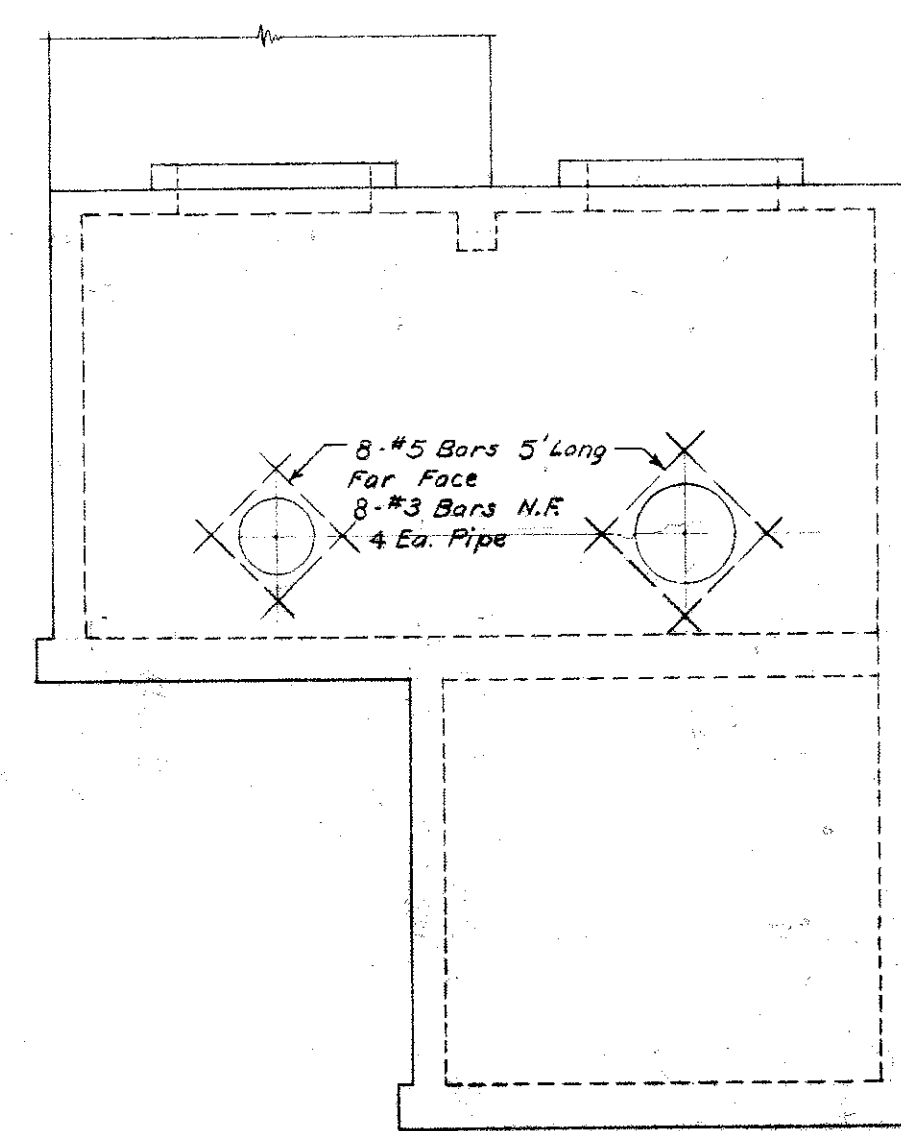
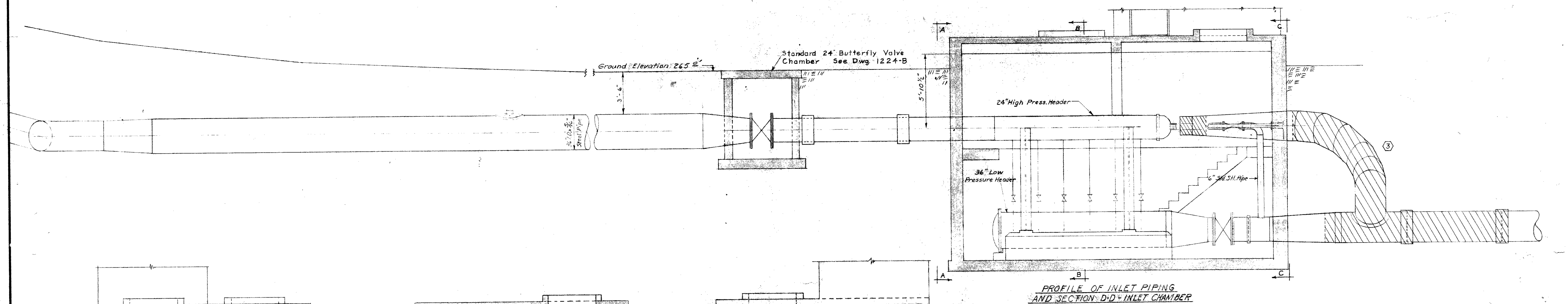
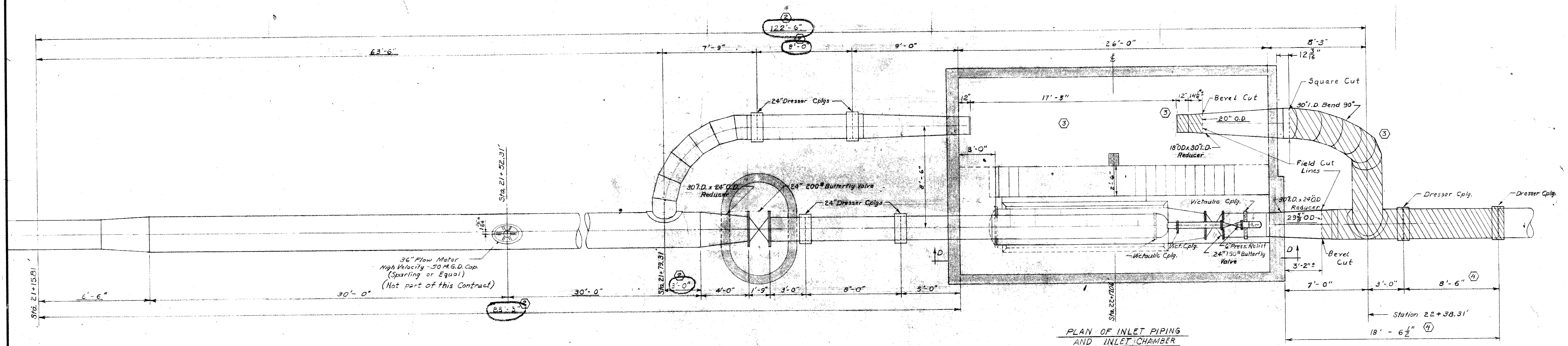


SECTION A-A

NO.	REVISION	DATE	BY	APP'D
①	As Built	7-10-83	FJD	DSB
REFERENCE				
Shop Dwg. American Pipe & Const. Co. dtd 1955				
C-2272, H-1829-1, H-1831-2, H-1832-1				
Water Div. Dwg. 12-18-15 dtd 1-20-55				
Water Div. Dwg. 1938-B dtd 3-30-82				
FIELD BOOK				
11857 352.15				

CITY OF TACOMA DEPARTMENT OF PUBLIC UTILITIES WATER DIVISION	
PORTLAND AVENUE RESERVOIR PRESSURE REDUCTION CHAMBER BAILEY VALVE & STANDPIPE INSTALLATION	
DATE 3-31-82	SUBMITTED <i>Frank D. Smith</i> SECTION CHIEF
DESIGN <i>D.W. Baldwin</i>	APPROVED <i>K. O. Olson</i> FOR Supt. of Water Div.
DRAWN <i>4.0 diameters</i>	SCALE 1/4" = 1'-0"
CHECKED <i>D.W. Baldwin</i>	DRAWING NO. 12-18-15A
W.O. 11857 352.15	SHEET 1 OF 1

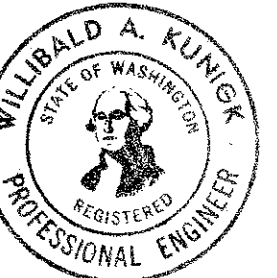




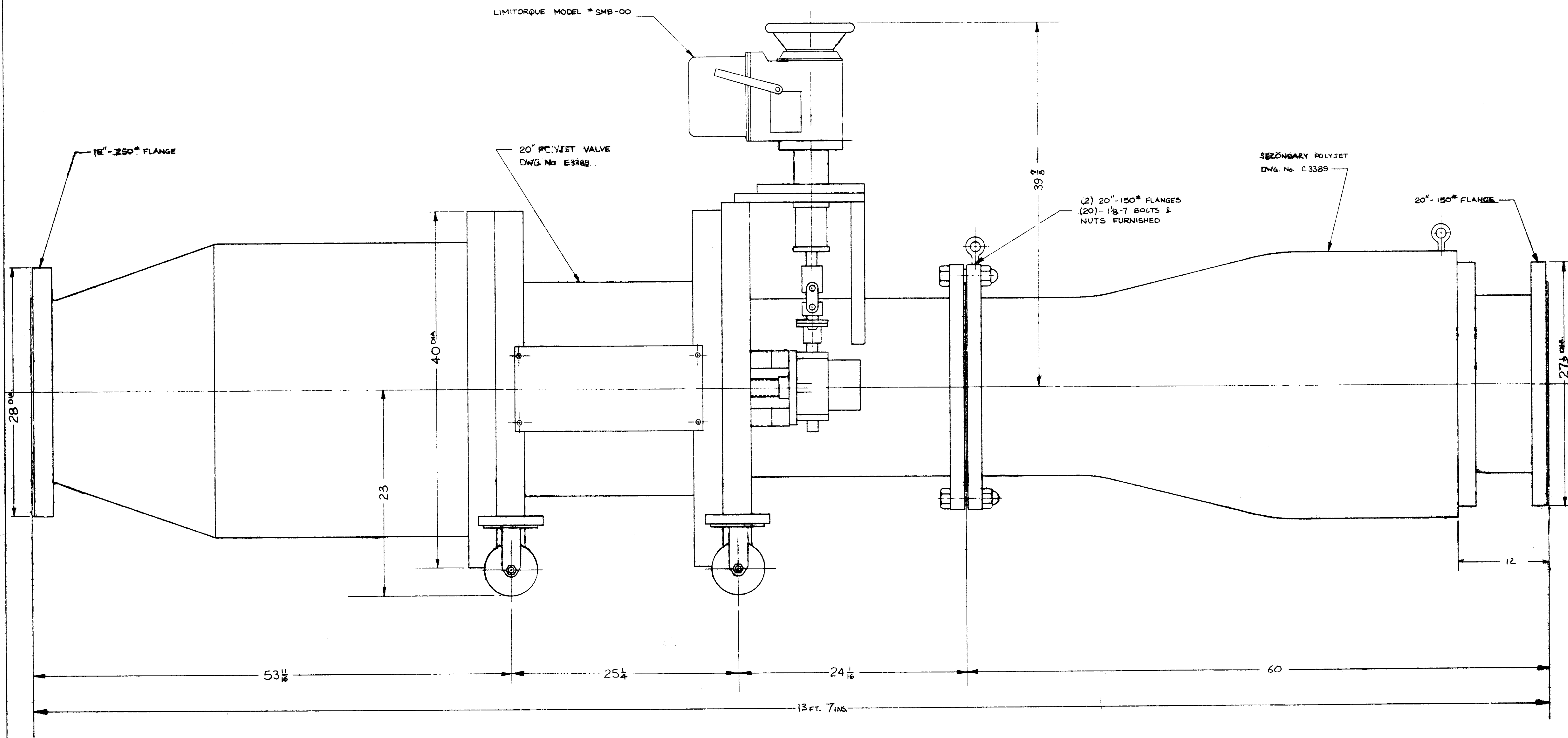
NOTE:
PIPING TO BE REMOVED BY CONTRACTOR

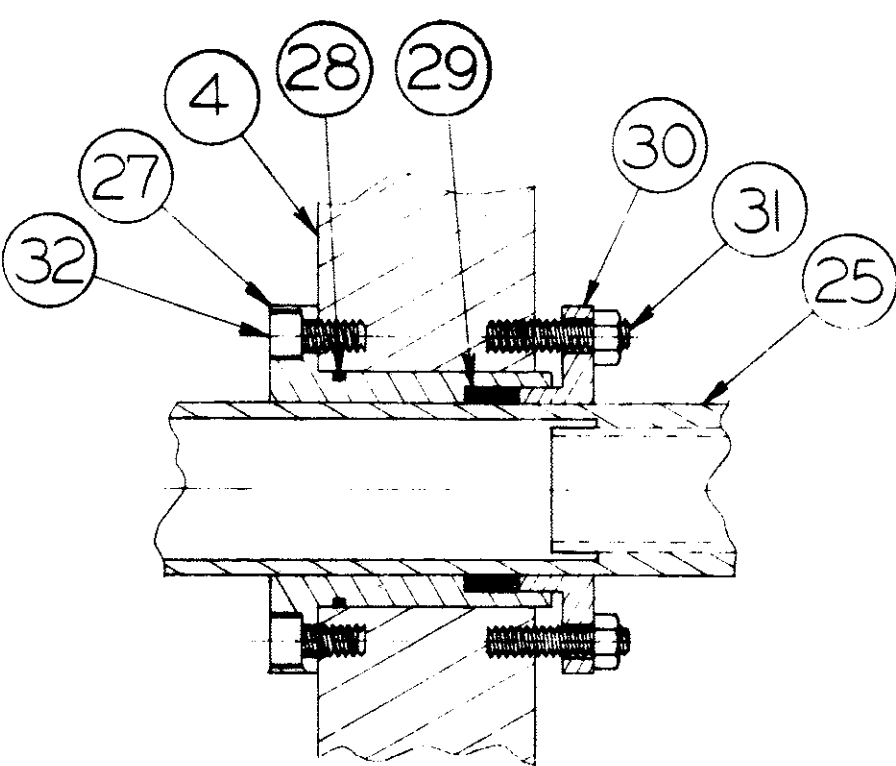
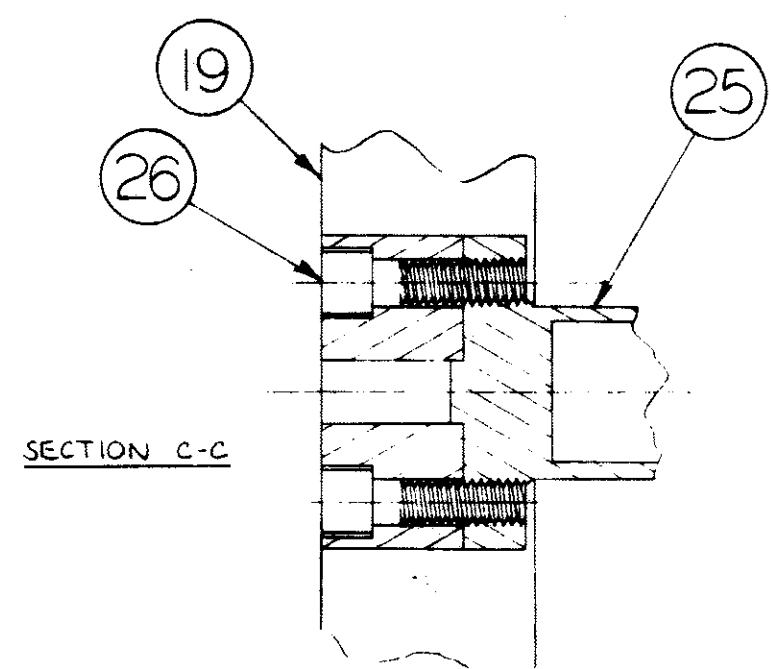
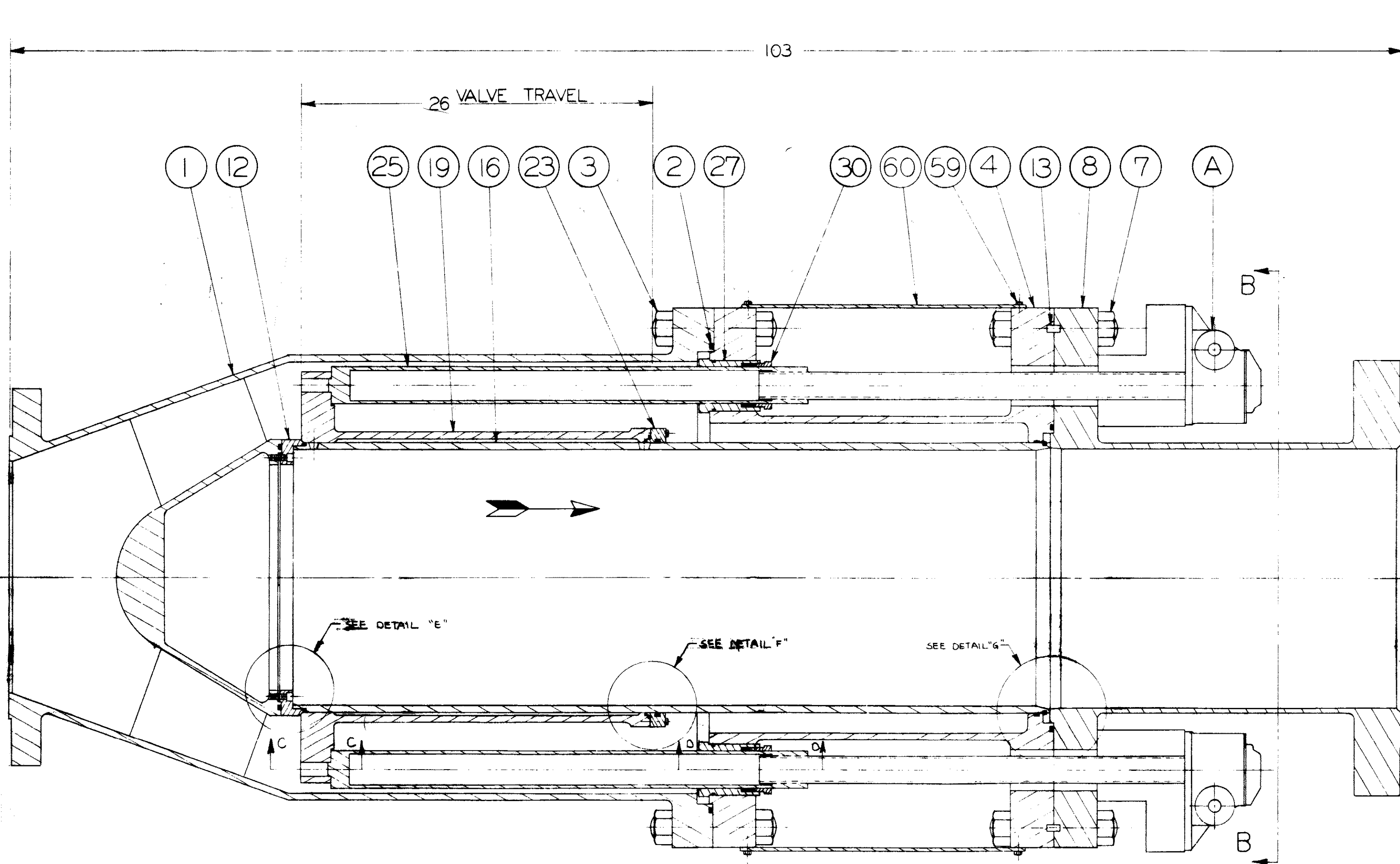
NO.	REVISION	DATE	BY	APP'D
1	Revised dimensions to suit Larner Johnson valve	5-27-55	GEN	G.E.H.
2	Revised dimensions to suit Stationing	7-5-55	E.H.M.	G.E.H.
3	Remove Larner Johnson, Annotate piping for removal Update Title Block	3-30-82	J.D.L.	D.W.B.
4	Field Verified Measurements	7-10-83	F.D.D.	D.W.B.

CITY OF TACOMA DEPARTMENT OF PUBLIC UTILITIES WATER DIVISION	
③ PORTLAND AVENUE RESERVOIR PRESSURE REDUCTION CHAMBER VALVES & PIPING DETAILS	
DATE: 1/20/84	SCALE: 1/4" = 1'-0"
DESIGN: [Signature]	DRAWING NO. 12-18-15B
CHECKED: [Signature]	W. O. DIRECTOR

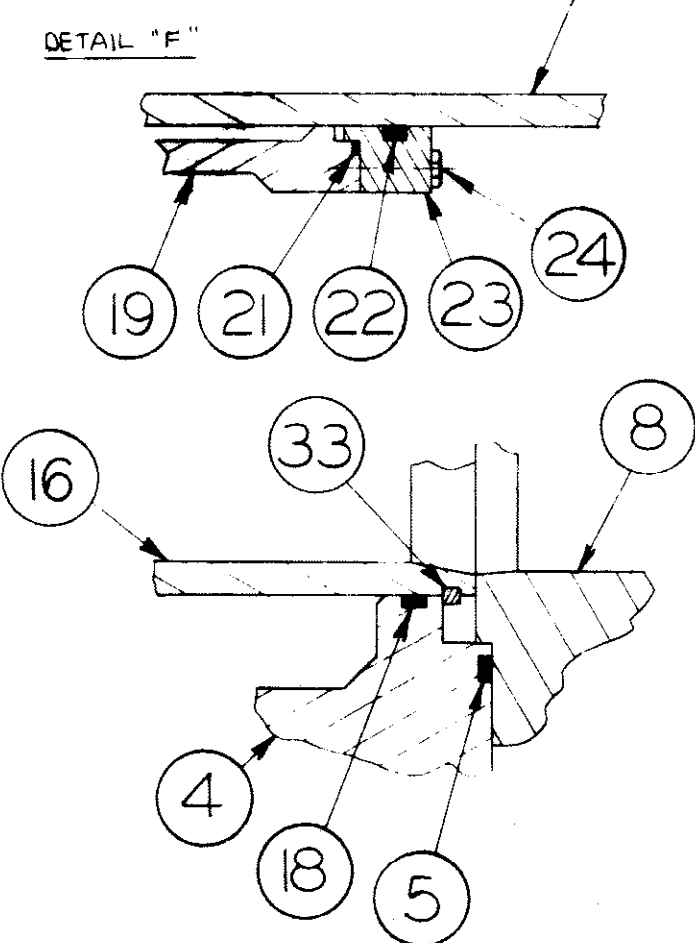
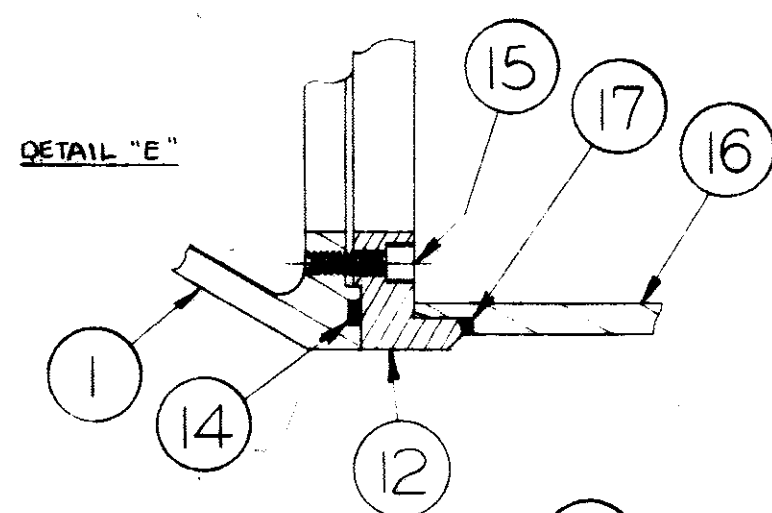


12-18-15B 951-21





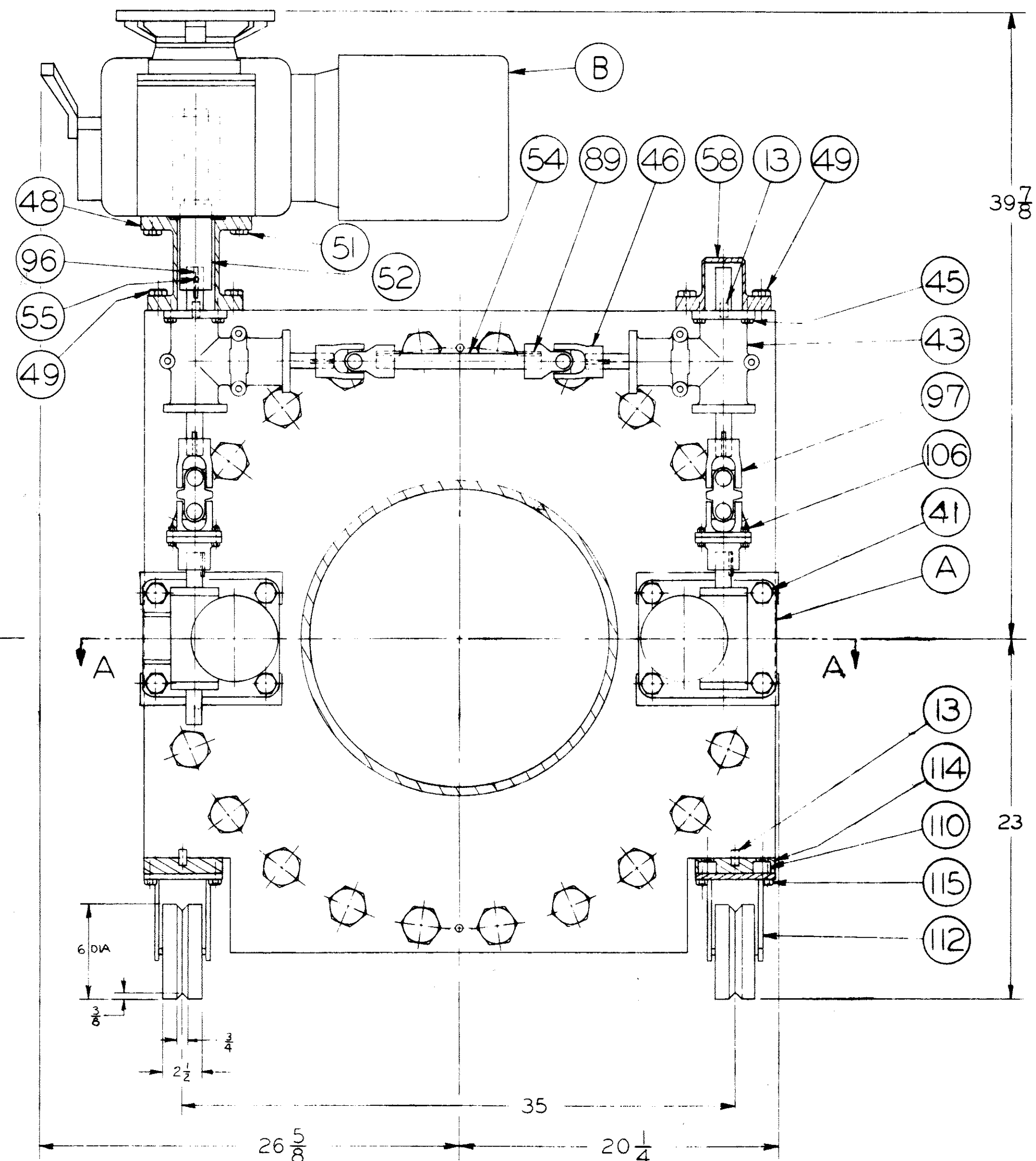
SECTION D-D



DETAIL "G"

NOTES:

1. BRONZE CASTINGS ARE TO ASTM B22 ALLOY C.
2. STEEL:
 - A. PLATE IS TO ASTM A285 GRADE C FIREBOX QUALITY IF 2" THICK OR LESS; TO ASTM A515 GRADE 65 IF OVER 2" THICK.
 - B. PIPE IS TO ASTM A53 GRADE B.
 - C. BAR IS TO ASTM A36.
3. STAINLESS STEEL:
 - A. PLATE IS TO ASTM A240 TYPE 316.
 - B. PIPE IS TO ASTM A312 GRADE TP 316.
 - C. FORGINGS ARE TO ASTM A473 TYPE 316.
 - D. BAR IS TO ASTM A276 TYPE 316.
4. FASTENERS:
 - A. STEEL:
 - i. BOLTS AND CAPSCREWS ARE TO ASTM A193 GRADE B7.
 - ii. NUTS ARE TO ASTM A194 GRADE 2H.
 - B. STAINLESS STEEL:
 - i. CAPSCREWS AND STUDS ARE TO ASTM A193 GR. B8.
 - ii. NUTS ARE TO ASTM A194 GR. 8.
 - C. EVEROUR:
 - i. CAPSCREWS ARE TO ASTM B98 ALLOY 651 HALF-HARD TEMPER.
5. CASTERS (112) ARE COLSON MODEL 7-6600-769.
6. ESTIMATED WEIGHT: 7000 #.

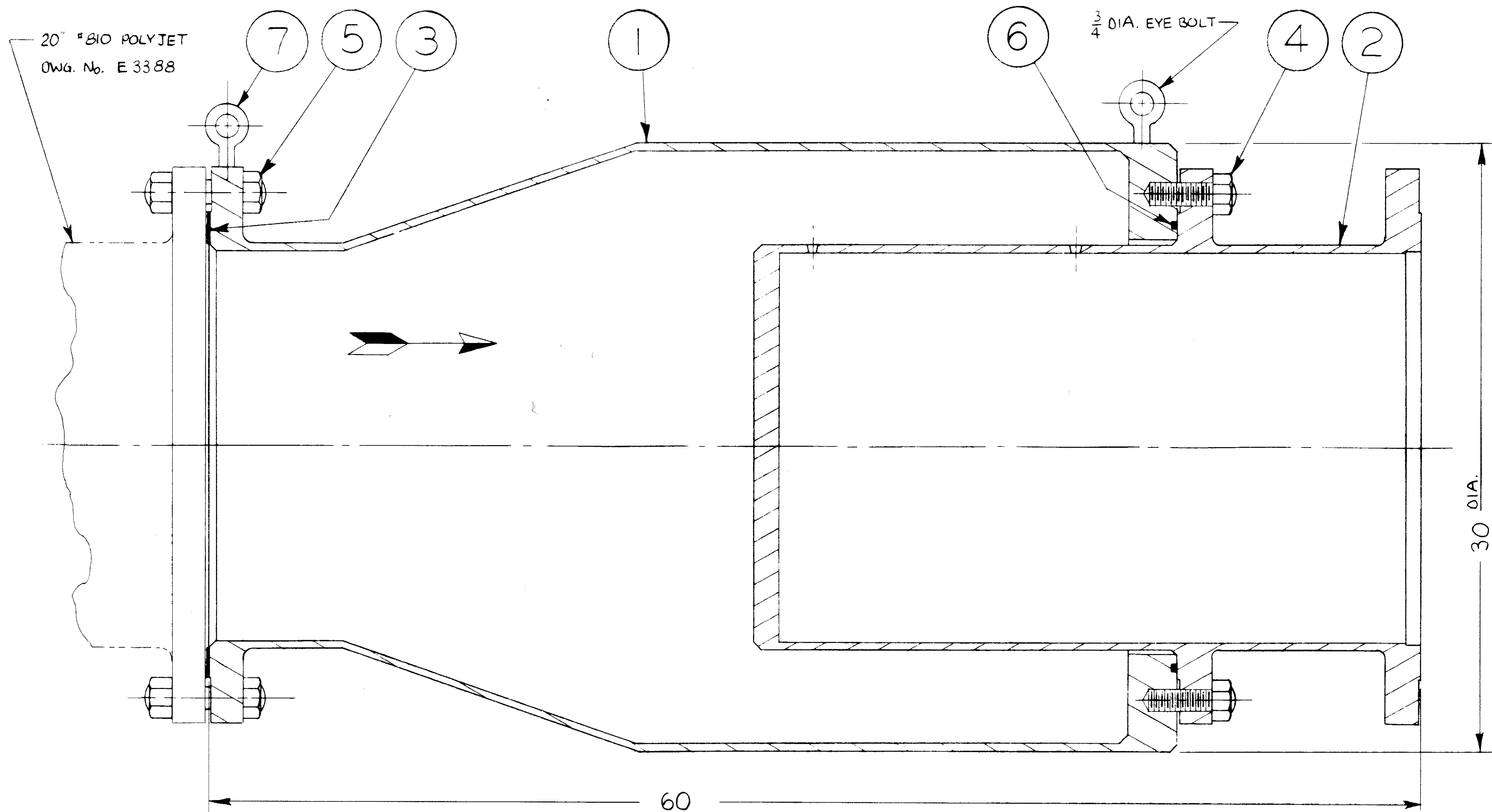


PARTS LIST

PART NO.	NAME	QTY.	MATERIAL	PART NO.	NAME	QTY.	MATERIAL
1	INLET BODY	1	STEEL	32	CAPSCREWS	4	STN. STL.
2	"O" RING	1	BUNA "N"	33	SLEEVE RETAINER	1	STN. STL.
3	STUDS & (2) NUTS	24	STEEL	41	CAPSCREWS	8	STEEL
4	BODY	1	STEEL	43	MITER GEAR BOX	2	-
5	"O" RING	1	BUNA "N"	45	CAPSCREWS	8	STEEL
7	STUDS & (2) NUTS	24	STEEL	46	UNIVERSAL JOINT	2	-
8	OUTLET BODY	1	STEEL	48	EXTENSION	1	STEEL
12	SEAT RING	1	STN. STL.	49	CAPSCREWS	8	STEEL
13	DOWELS	10	STEEL	51	CAPSCREWS	4	STEEL
14	"O" RING	1	BUNA "N"	52	SHAFT	1	STEEL
15	CAPSCREWS	12	STN. STL.	54	SHAFT	1	STEEL
16	SLEEVE	1	STN. STL.	55	SET SCREW	1	STEEL
17	"O" RING	1	BUNA "N"	58	BRACKET	1	STEEL
18	"O" RING	1	BUNA "N"	89	KEY	9	STEEL
19	INNER VALVE	1	STN. STL.	96	KEY	1	STEEL
21	"O" RING	1	BUNA "N"	97	UNIVERSAL JOINT	2	-
22	"O" RING PACKING	1	BUNA "N"	106	BOLTS & NUTS	8	STEEL
23	GLAND	1	BRONZE	110	MOUNTING PLATE	4	STEEL
24	CAPSCREWS	16	EVEROUR	112	CASTERS	4	-
25	DRIVE TUBE	2	STN. STL.	114	CAPSCREWS	8	STEEL
26	CAPSCREWS	4	EVEROUR	115	CAPSCREWS	16	STEEL
27	STUFFING BOX	2	BRONZE	A	LIFT JACK	2	-
28	"O" RING	2	BUNA "N"	B	MOTOR OPERATOR	1	-
29	PACKING	2	BARLOCK 432	59	STEM COVER	2	STEEL
30	GLAND	2	BRONZE	60	CAPSCREWS	8	STEEL
31	STUDS & NUTS	4	STN. STL.				

City Draw. No.
12-18-38B

VALVE		POLY JET	
CHAS. M. BAILEY CO.		E 3388	



NOTE:
ESTIMATED WEIGHT: 1400 LB.

PARTS LIST			
PART No.	NAME	QTY.	MATERIAL
1	HOUSING	1	STEEL
2	ORIFICE	1	STN. STL.
3	GASKET	1	ASBESTOS
4	STUDS & NUTS	20	STEEL
5	STUDS & (2) NUTS	20	STEEL
6	"O" RING	1	BUNA "N"
7	LIFTING EYE BOLTS	2	STEEL

UNLESS OTHERWISE NOTED		#810 20"	-	-
1. TOLERANCES ON DIMENSIONS ARE $\pm 1/64$ ON FRACTIONAL DIMENSIONS		VALVE	MATERIAL	PATTERN NO.
2. BREAK ALL SHARP EDGES		SECONDARY POLYJET		
3. CHAMFER ALL THREADS		DATE 4/16/82		
4. ALL FINISHED SURFACES ARE ∇		DWN. BY MR		
City Dwg. No. 12-18-38C		CHAS. M. BAILEY CO. EMERYVILLE, CALIF.		DRAWING NO. C 3389
				REV. A