



**CITY OF TACOMA**  
**Public Works Engineering Division**

**ADDENDUM NO. 2**

**DATE 2/16/2023**

**REVISIONS TO:**

**Request for Bids Specification No. PW22-0779F  
I Street Overlay**

**NOTICE TO ALL BIDDERS:**

This addendum is issued to clarify, revise, add to or delete from, the original specification documents for the above project. This addendum, as integrated with the original specification documents, shall form the specification documents. The noted revisions shall take precedence over previously issued specification documents and shall become part of this contract.

**REVISIONS TO THE SUBMITTAL DEADLINE:**

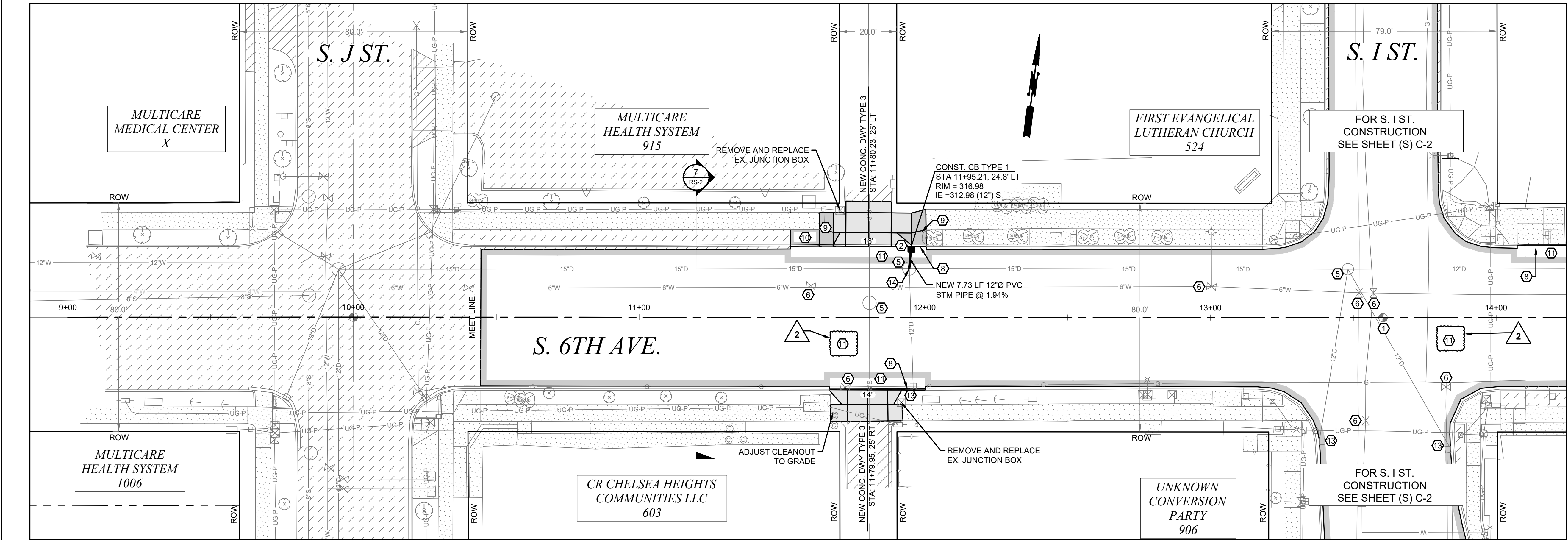
The submittal deadline has been changed to 11:00 a.m., Pacific Time, Tuesday, February 28, 2023.

**REVISIONS TO THE PLANS:**

Plan sheets C-1 and C-2 have been updated to show construction note numbering has changed from note 10 to note 11.

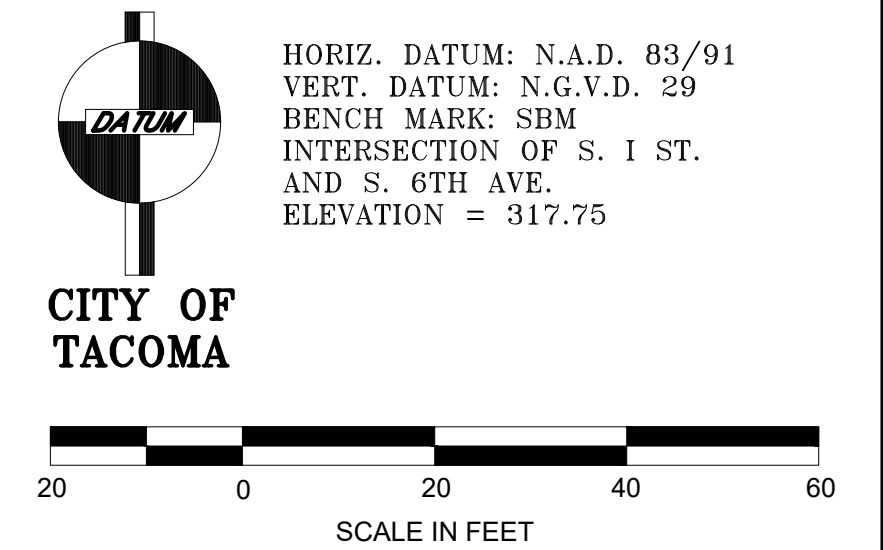
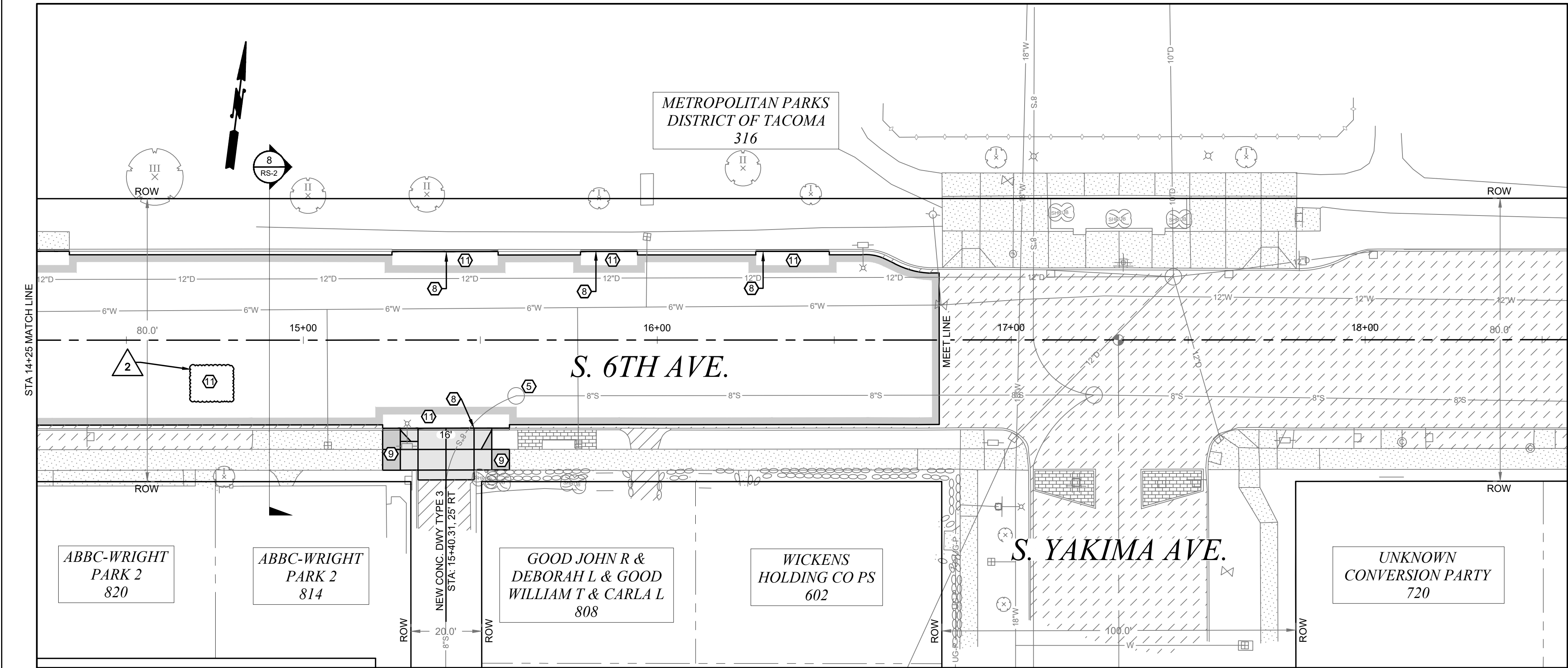
NOTE: Acknowledge receipt of this addendum by initialing the corresponding space as indicated on the signature page. Vendors who have already submitted their bid/proposal may contact the Purchasing Division at 253-502-8468 and request return of their bid/proposal for acknowledgment and re-submittal. Or, a letter acknowledging receipt of this addendum may be submitted in an envelope marked Request for Bids Specification No. PW22-0779F Addendum No. 2. The City reserves the right to reject any and all bids, including, in certain circumstances, for failure to appropriately acknowledge this addendum.




cc: Jon Kulju, Public Works Engineering



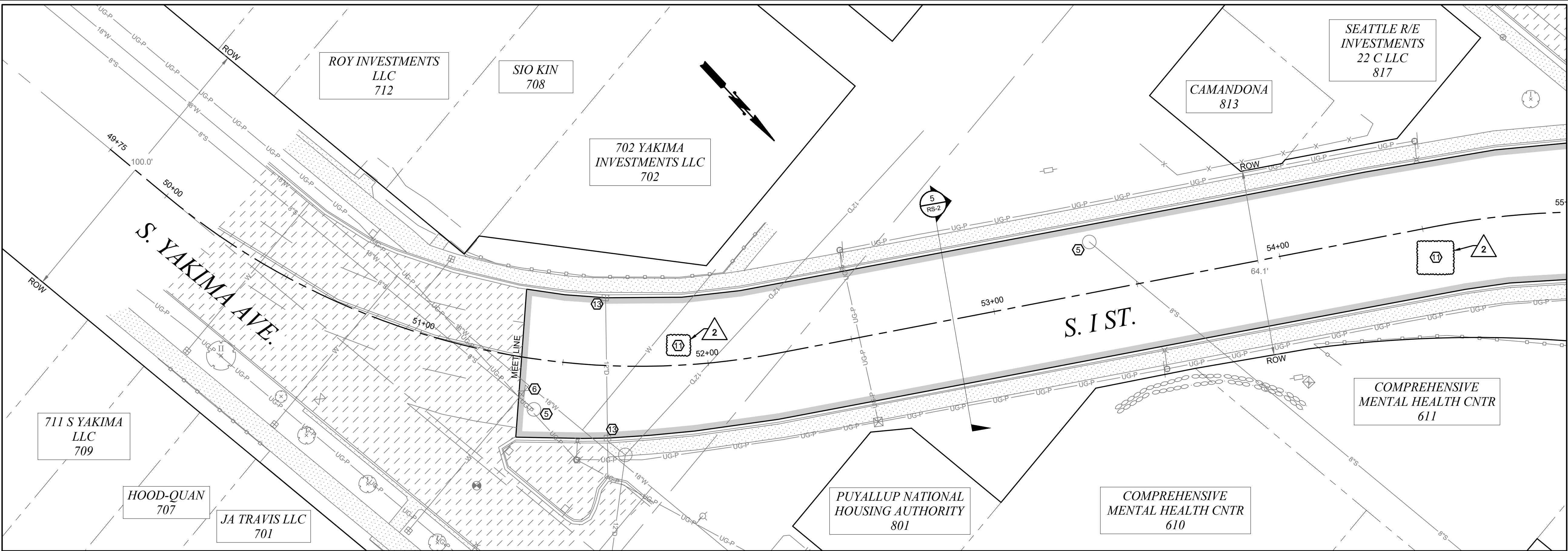
- CONSTRUCTION NOTES**
1. CONSTRUCT BRASS POURED MONUMENT PER CITY OF TACOMA STANDARD PLAN SU-01
  2. PROVIDE INLET PROTECTION TO PROPOSED CATCH BASIN PER SPECIFICATION 8-01 UNTIL END OF CONSTRUCTION ACTIVITIES
  3. TO BE ADJUSTED BY OTHERS
  4. TO BE RELOCATED BY OTHERS
  5. ADJUST TO GRADE PER SPECIFICATION 7-05
  6. ADJUST EXISTING VALVE PER CITY OF TACOMA STANDARD SU-37
  7. CONSTRUCT CEMENT CONCRETE CURB RAMP PER CITY OF TACOMA STANDARD PLAN SU-05 SERIES
  8. CONSTRUCT CEMENT CONCRETE TRAFFIC CURB PER CITY OF TACOMA STANDARD PLAN SU-03A
  9. CONSTRUCT CEMENT CONCRETE SIDEWALK PER CITY OF TACOMA STANDARD PLAN SU-04
  10. GRADE FOR POSITIVE DRAINAGE AND PLACE 2 INCH HMA CL 1/2 INCH PG 58H-22 OVER 2 INCH CRUSHED SURFACING TOP COURSE
  11. CONSTRUCT HMA CL. " PG 58H-22 PAVEMENT PER CITY OF TACOMA STANDARD PLAN SU-15A. REFER TO CROSS SECTION FOR MATERIAL AND DEPTHS.
  12. GRADE FOR POSITIVE DRAINAGE AND PLACE 2 INCH CRUSHED SURFACING TOP COURSE
  13. ADJUST CATCHBASIN TO GRADE, FURNISH FRAME AND GRATE
  14. CONNECT NEW PIPE TO EXISTING STRUCTURE

- GENERAL NOTES:**
1. ALL APPROACHES SHALL BE GRADED AND PLACED TO ENSURE POSITIVE DRAINAGE.
  2. ADJUSTING STRUCTURES SUCH AS MANHOLES AND VALVE CHAMBERS SHALL BE DONE PER C.O.T. STANDARD DETAIL SU-25 AND SU-37.
  3. WHEN REMOVING AN APPROACH THE LIMITS SHALL BE FROM THE EDGE OF THE APPROACH TO A MINIMUM OF 2' BEHIND THE NEW EDGE OF PAVEMENT.
- UTILITY NOTE:**
- UTILITIES SHOWN ARE FROM SUB-CONSULTANT SURVEY AND CITY OF TACOMA GIS INFORMATION AND MAY NOT BE REPRESENTATIVE OF ACTUAL LOCATION. IT IS THE CONTRACTOR'S RESPONSIBILITY TO VERIFY THROUGH UTILITY LOCATE SERVICES, UTILITY AS-BUILT DRAWINGS, RECORD DRAWINGS AND POTHOLES THE HORIZONTAL AND VERTICAL LOCATION OF EXISTING UTILITIES. ALL MEANS AND METHODS TO RESEARCH AND VERIFY EXISTING UTILITY LOCATIONS SHALL BE INCIDENTAL TO THE ASSOCIATED WORK.



<b>CALL BEFORE YOU DIG</b> EXISTING UTILITIES ARE SHOWN IN APPROXIMATE LOCATIONS ONLY PER BEST AVAILABLE INFO, AND MAY BE INCOMPLETE. CONTRACTOR SHALL BE RESPONSIBLE FOR LOCATING, POTHOLES AND AVOIDING ALL EXISTING UTILITIES. CALL TWO BUSINESS DAYS BEFORE YOU DIG (1-800-424-5555) OR VISIT ONLINE: <a href="http://www.callbeforeyoudig.org">www.callbeforeyoudig.org</a>				ADDENDUM 2 - NOTE NUMBERING CHANGED FROM 10 TO 11		2/16/2023		FINAL CONSTRUCTION CHECKED		DATE JULY 2022		SCALE 1" = 20'				CITY OF TACOMA DEPARTMENT OF PUBLIC WORKS		CONSTRUCTION PLAN & PROFILE		PWK-G0040	
								BY		DESIGNED BW		CHECKED DCS		PROJECT NAME PROJECT		DocuSigned by:  ENGINEERING DIRECTOR MANAGER		S. I ST. OVERLAY S. 6TH AVE. FROM S. J ST. TO S. YAKIMA AVE		SHEET NO. 8	
				REVISION		DATE		APPD		FIELD BOOKS		DRAWING NAME SI-CONST.DWG						SHEET C-1 OF C-2			

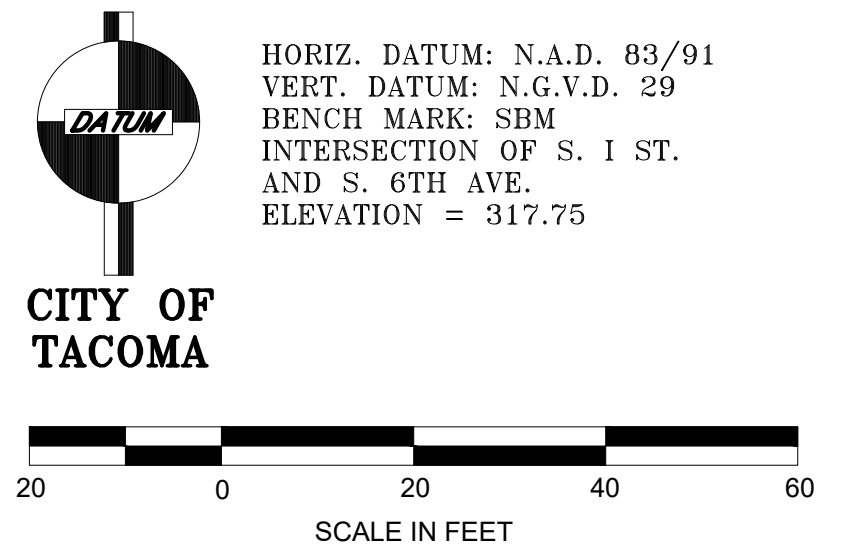
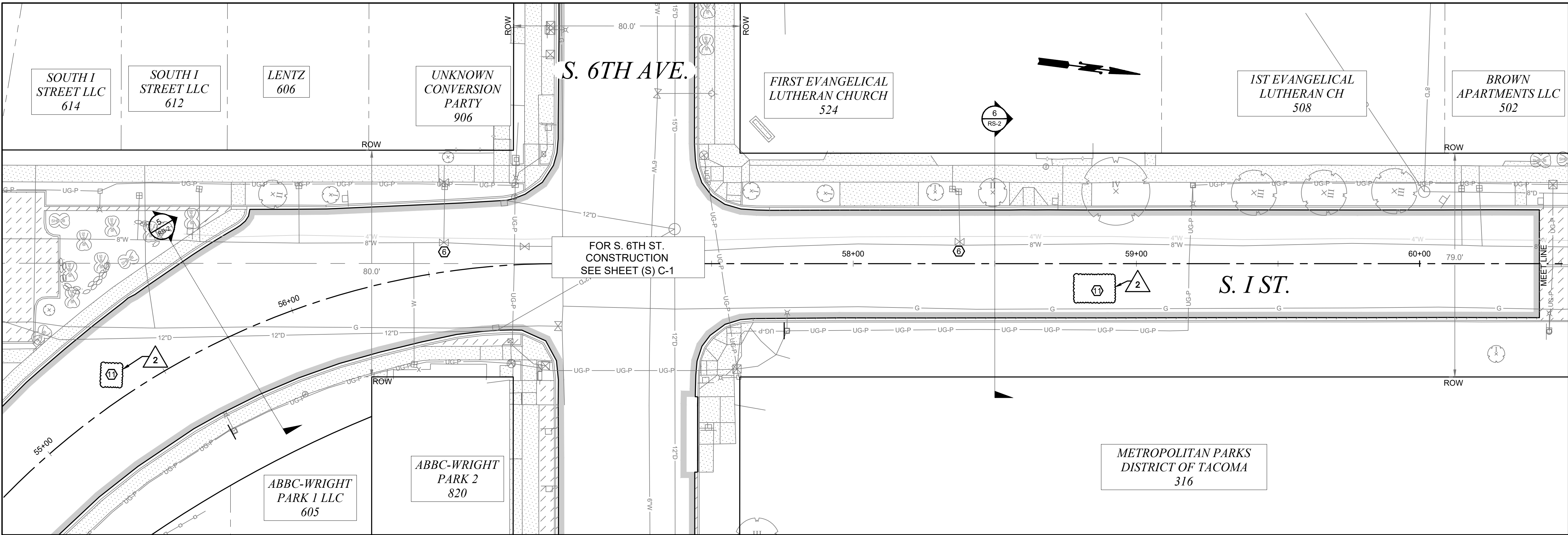




- ### CONSTRUCTION NOTES
1. CONSTRUCT BRASS POURED MONUMENT PER CITY OF TACOMA STANDARD PLAN SU-01
  2. PROVIDE INLET PROTECTION TO PROPOSED CATCH BASIN PER SPECIFICATION 8-01 UNTIL END OF CONSTRUCTION ACTIVITIES
  3. TO BE ADJUSTED BY OTHERS
  4. TO BE RELOCATED BY OTHERS
  5. ADJUST TO GRADE PER SPECIFICATION 7-05
  6. ADJUST EXISTING VALVE PER CITY OF TACOMA STANDARD SU-37
  7. CONSTRUCT CEMENT CONCRETE CURB RAMP PER CITY OF TACOMA STANDARD PLAN SU-05 SERIES
  8. CONSTRUCT CEMENT CONCRETE TRAFFIC CURB PER CITY OF TACOMA STANDARD PLAN SU-03A
  9. CONSTRUCT CEMENT CONCRETE SIDEWALK PER CITY OF TACOMA STANDARD PLAN SU-04
  10. GRADE FOR POSITIVE DRAINAGE AND PLACE 2 INCH HMA CL 1/2 INCH PG 58H-22 OVER 2 INCH CRUSHED SURFACING TOP COURSE
  11. CONSTRUCT HMA CL. 1/2 INCH PG 58H-22 PAVEMENT PER CITY OF TACOMA STANDARD PLAN SU-15A. REFER TO CROSS SECTION FOR MATERIAL AND DEPTHS.
  12. GRADE FOR POSITIVE DRAINAGE AND PLACE 2 INCH CRUSHED SURFACING TOP COURSE
  13. ADJUST CATCHBASIN TO GRADE, FURNISH FRAME AND GRATE
  14. CONNECT NEW PIPE TO EXISTING STRUCTURE

- ### GENERAL NOTES:
1. ALL APPROACHES SHALL BE GRADED AND PLACED TO ENSURE POSITIVE DRAINAGE.
  2. ADJUSTING STRUCTURES SUCH AS MANHOLES AND VALVE CHAMBERS SHALL BE DONE PER C.O.T. STANDARD DETAIL SU-25 AND SU-37.
  3. WHEN REMOVING AN APPROACH THE LIMITS SHALL BE FROM THE EDGE OF THE APPROACH TO A MINIMUM OF 2' BEHIND THE NEW EDGE OF PAVEMENT.

**UTILITY NOTE:**  
UTILITIES SHOWN ARE FROM SUB-CONSULTANT SURVEY AND CITY OF TACOMA GIS INFORMATION AND MAY NOT BE REPRESENTATIVE OF ACTUAL LOCATION. IT IS THE CONTRACTOR'S RESPONSIBILITY TO VERIFY THROUGH UTILITY LOCATE SERVICES, UTILITY AS-BUILT DRAWINGS, RECORD DRAWINGS AND POTHOLES THE HORIZONTAL AND VERTICAL LOCATION OF EXISTING UTILITIES. ALL MEANS AND METHODS TO RESEARCH AND VERIFY EXISTING UTILITY LOCATIONS SHALL BE INCIDENTAL TO THE ASSOCIATED WORK.



**CALL BEFORE YOU DIG**  
EXISTING UTILITIES ARE SHOWN IN APPROXIMATE LOCATIONS ONLY PER BEST AVAILABLE INFO, AND MAY BE INCOMPLETE. CONTRACTOR SHALL BE RESPONSIBLE FOR LOCATING, POTHOLES AND AVOIDING ALL EXISTING UTILITIES.  
CALL TWO BUSINESS DAYS BEFORE YOU DIG  
(1-800-424-5555) OR VISIT ONLINE: [www.callbeforeyoudig.org](http://www.callbeforeyoudig.org)

ADDENDUM 2 - NOTE NUMBERING CHANGED FROM 10 TO 11

NO	REVISION	DATE	APPD

FINAL CONSTRUCTION CHECKED	DATE JULY 2022	SCALE 1" = 20'
BY DESIGNED BW	CHECKED DCS	
DATE DRAWN REE	PROJECT NAME PROJECT	
FIELD BOOKS	DRAWING NAME SI-CONST.DWG	

CITY OF TACOMA  
DEPARTMENT OF PUBLIC WORKS  
CONSTRUCTION PLAN & PROFILE  
S. I ST. OVERLAY  
FROM S. YAKIMA AVE. TO S. 5TH ST.

PWK-G0040  
SHEET NO. 9  
SHEET C-2 OF C-2