



CITY OF TACOMA
Public Works Engineering Division

ADDENDUM NO. 1

DATE: 5/17/2022

REVISIONS TO:
Request for Bids Specification No. PW22-0114F
Edison, Whitman, Lincoln Safe Routes to Schools

NOTICE TO ALL BIDDERS:

This addendum is issued to clarify, revise, add to or delete from, the original specification documents for the above project. This addendum, as integrated with the original specification documents, shall form the specification documents. The noted revisions shall take precedence over previously issued specification documents and shall become part of this contract.

REVISIONS TO THE SUBMITTAL DEADLINE:

The submittal deadline remains the same.

REVISIONS TO THE SPECIFICATIONS:

Please remove Table of Contents from Bid Spec and replace with Table of Contents labeled Addendum 1.

REVISIONS TO THE SPECIAL PROVISIONS:

Please remove Section 2-06.5 in its entirety and replace with Section 2-06.5 labeled Addendum 1.

Please remove Section 7-05.5 in its entirety and replace with Section 7-05.5 labeled Addendum 1.

Please remove Section 7-17.3(2)H in its entirety and replace with Section 7-17.3(2)H labeled Addendum 1.

Please remove Section 8-01.5 in its entirety and replace with Section 8-01.5 labeled Addendum 1.

REVISIONS TO THE PLANS:

Please remove Plan Sheet #5 in its entirety and replace with Plan Sheet #5 labeled Addendum 1.

Please remove Plan Sheet #24 in its entirety and replace with Plan Sheet #24 labeled Addendum 1.

Please remove Plan Sheet #25 in its entirety and replace with Plan Sheet #25 labeled Addendum 1.

REVISIONS TO THE PROPOSAL PAGES:

Please remove the bid proposal in its entirety and replace with the bid proposal labeled Addendum 1.

REVISIONS TO THE SPECIAL REMINDER:

Please remove the Special Reminder in its entirety and replace with the Special Reminder labeled Addendum 1.

NOTE: Acknowledge receipt of this addendum by initialing the corresponding space as indicated on the signature page. Vendors who have already submitted their bid/proposal may contact the Purchasing Division at 253-502-8468 and request return of their bid/proposal for acknowledgment and re-submittal. Or, a letter acknowledging receipt of this addendum may be submitted in an envelope marked Request for Bids Specification No. PW22-0114F Addendum No. 1. The City reserves the right to reject any and all bids, including, in certain circumstances, for failure to appropriately acknowledge this addendum.

cc: Josh Lauer, Public Works Engineering

Addendum 1

SPECIFICATION NO. PW22-0114F

TABLE OF CONTENTS

NOTE: ALL BIDDERS MUST HAVE A COPY OF THE SPECIFICATIONS AND THE BID SUBMITTAL PACKAGE

REQUEST FOR BIDS

SPECIAL REMINDER TO ALL BIDDERS

SPECIAL NOTICE TO BIDDERS

PART I BID PROPOSAL AND CONTRACT FORMS

- 1 Bid Proposal
- 2 Signature Page
- 3 Bid Bond
- 4 Certification Of Compliance With Wage Payment Statutes
- 5 State Responsibility and Reciprocal Bid Preference Information
- 6 List of Subcontractor Categories of Work
- 7 City of Tacoma – Equity in Contracting Requirement Form
- 8 City of Tacoma – Equity in Contracting Utilization Form
- 9 Contract
- 10 Payment Bond to the City of Tacoma
- 11 Performance Bond to the City of Tacoma
- 12 General Release Form

PART II SPECIAL PROVISIONS

- | | |
|------------|-------------------------------------------------------------------------------|
| Division 1 | General Requirements |
| Division 2 | Earthwork |
| Division 3 | Production from Quarry and Pit Sites and Stockpiling |
| Division 4 | Bases |
| Division 5 | Surface Treatments and Pavements |
| Division 6 | Vacant |
| Division 7 | Drainage Structures, Storm Sewers, Sanitary Sewers, Water Mains, and Conduits |
| Division 8 | Miscellaneous Construction |
| Division 9 | Materials |
| Appendix A | City of Tacoma and WSDOT Standard Plans |

PART III CITY OF TACOMA – EQUITY IN CONTRACTING PROGRAM

PART IV CITY OF TACOMA - LOCAL EMPLOYMENT AND APPRENTICESHIP TRAINING PROGRAM (LEAP) REGULATIONS FOR PUBLIC WORKS CONTRACTS

PART V STATE PREVAILING WAGE RATES AND GENERAL REQUIREMENTS

Addendum 1

2-06.5 Measurement and Payment

This section is supplemented with the following:

Subgrade Maintenance and Protection Plan shall be paid by lump sum and shall apply to all subgrade.

“Subgrade Maintenance and Protection Plan”, per lump sum

The lump sum contract price for “Subgrade Maintenance and Protection Plan” shall be full pay for all costs, including but not limited to, preparing, submitting, revising, and resubmitting revisions for the Subgrade Maintenance and Protection Plan.

All costs for Subgrade Maintenance and Protection shall be included in other bid item work.

If the contractor fails to protect the subgrade so that additional subgrade repairs are required as determined by the City Inspector, then the city shall not owe payment for these additional subgrade repairs in accordance with Section 2-06.3.

7-05.5 Payment

The first paragraph is supplemented with the following:

The unit Contract price for “Manhole_____” shall be full pay for all work required to furnish and install the new manhole to finished grade, including, but not limited to, excavating for, furnishing backfill, compaction of backfill, connection of new pipe(s), channeling, covers, frames, ladders, steps, and handholds, as applicable per Standard Plans.

The unit Contract price for “Catch Basin_____” shall be full pay for all work required to furnish and install the new catch basin to finished grade, including, but not limited to, excavating for, furnishing backfill, compaction of backfill, connection of new pipe(s), frame, cover, as applicable per Standard Plans.

The pay item for “Drop Manhole Connection” is revised to read:

“Drop Manhole Connection, ____-Inch Diam.”, per each.

The pay item for “Connection to Drainage Structure” is revised to read:

“Connect New Sewer Pipe to Existing Structure”, per each.

The unit Contract price per each “Connect New Sewer Pipe to Existing Structure” shall be full pay for all labor, equipment and materials necessary to connect the new sewer pipe of all diameters to the existing structure as specified in Section 7-05.3. The contractor shall be responsible to confirm connection sizes, no extra payment shall be made for varying pipe diameters.

This section is supplemented with the following:

“Reconnect Existing Sewer Pipe to New Structure”, per each.

The unit Contract price per each shall be full pay for all labor, equipment and materials necessary to reconnect the existing sewer pipe to the new structure as specified in Section 7-

Addendum 1

05.3. The contractor shall be responsible to confirm reconnection sizes, no extra payment shall be made for varying pipe diameters.

"Adjust Existing Catch Basin, Furnish New Frame and Grate", per each

The unit Contract price per each for "Adjust Existing Catch Basin, Furnish New Frame and Grate" shall be full pay for all costs associated with adjusting the frame and grate to finished grade, including but not limited to, excavating, furnish and place backfill, furnishing and installing the new frame and grate, compacting, surfacing, and restoration.

"Adjust Existing Manhole, Furnish New Frame and Cover", per each

The unit Contract price per each for "Adjust Existing Manhole, Furnish New Frame and Cover" shall be full pay for all costs associated with adjusting the frame and cover to finished grade, including but not limited to, excavating, furnish and place backfill, furnishing and installing the new frame and cover, compacting, surfacing, and restoration.

"Adjust Existing Valve Chamber to Grade", per each

The unit Contract price per each for "Adjust Existing Valve Chamber to Grade" shall be full pay for all costs associated with the adjusting the valve chamber to finished grade, including but not limited to, excavating, furnish and place backfill, compacting, surfacing, and restoration.

"Manhole ____-In. Diam. Type ____, with Cast-in-Place Base", per each.

The unit Contract price per each for "Manhole ____-In. Diam. Type ____, with Cast-in-Place Base" shall be full pay for all labor, equipment and materials required to furnish, excavate for, furnish and place backfill, compact, and install to finished grade the new manhole with a cast-in-place base, including, but not limited to, insuring proper support of existing main, channeling, connection of new pipe, covers, frames, ladders, steps, and handholds, as applicable per Standard Plans

"Catch Basin Type 2 Additional Height, ____ In. Diam.", per linear foot.

7-17.3(2)H Television Inspection

The first sentence is revised to read:

The Contractor will video inspect all sanitary and storm sewers prior to paving where paving occurs over sewers, or prior to final acceptance.

8-01.5 Payment

This section is supplemented with the following:

"Erosion/Water Pollution Control", per lump sum.

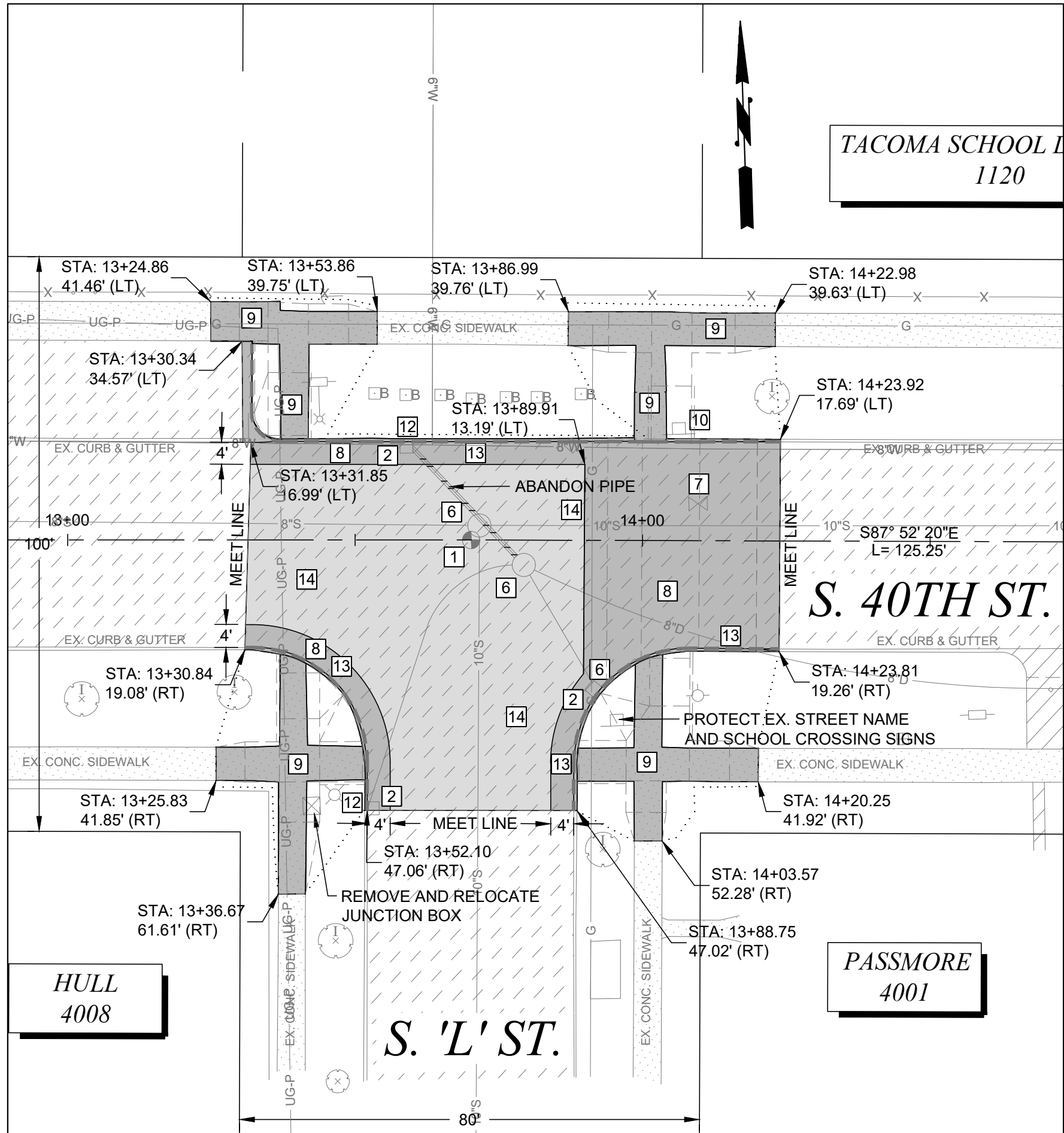
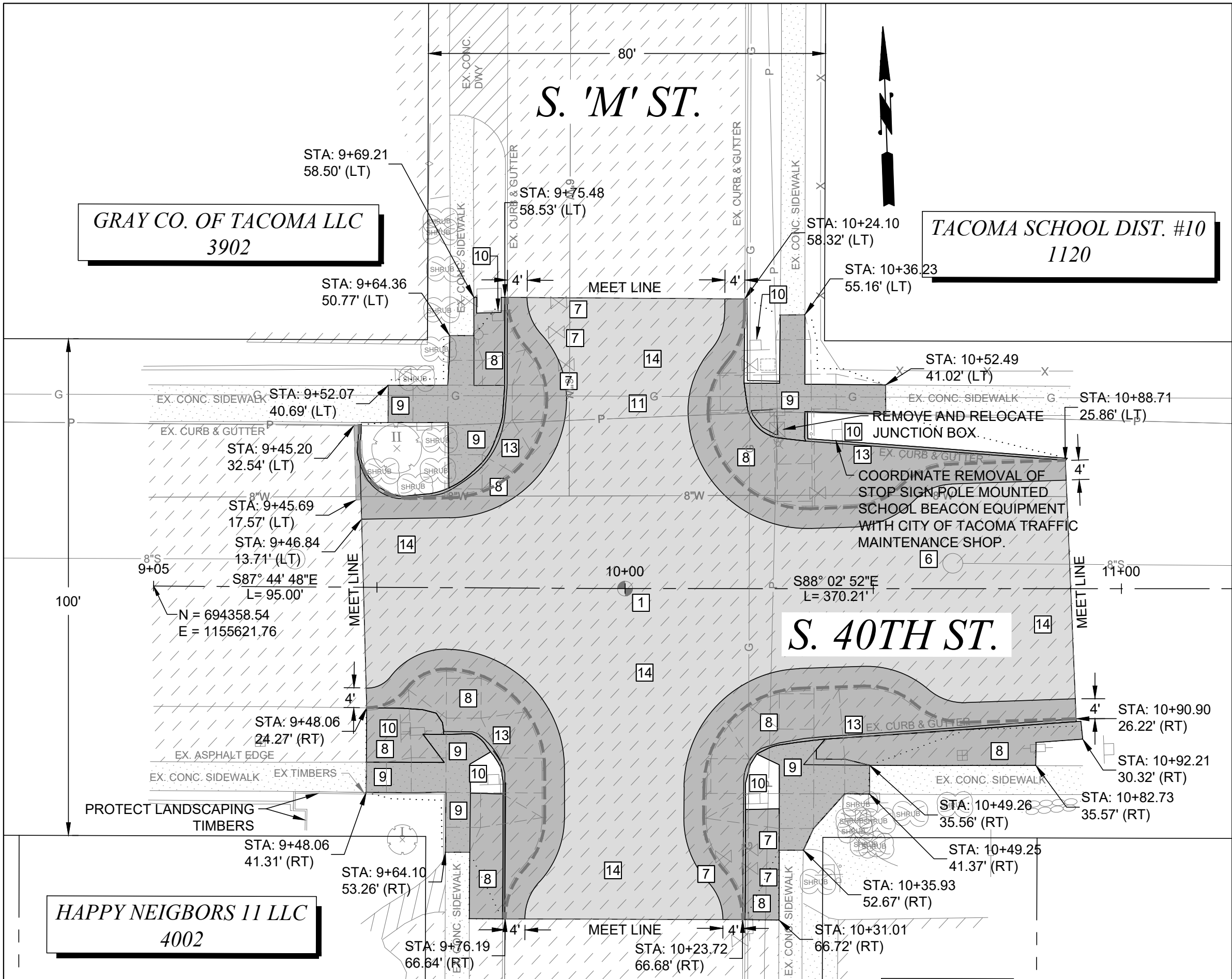
The lump sum contract price for "Erosion Control" shall be full pay for all cost for labor, equipment, and materials to perform all work associated with erosion control. Work shall include, but shall not be limited to, furnishing, purchase and delivery or required materials, installation and maintenance of temporary erosion and sediment control measures, and all costs incurred by the Contractor in performing the Contract Work defined in Section 8-01, except for unit bid items in Section 8-01 when these are included in the bid proposal. It is the Contractor's

Addendum 1

responsibility to maintain, repair, and replace any and all erosion control measures as required to maintain compliance with the NPDES Construction Stormwater General Permit and Tacoma Municipal Code 12.08 for the entire duration of the Project.

“Stormwater Pollution Prevention Plan (SWPPP)”, per lump sum. The lump sum contract price for “Stormwater Pollution Prevention Plan (SWPPP)” shall be full pay for all costs, including but not limited to, preparing, submitting, revising, and resubmitting revisions for the Stormwater Pollution Prevention Plan.

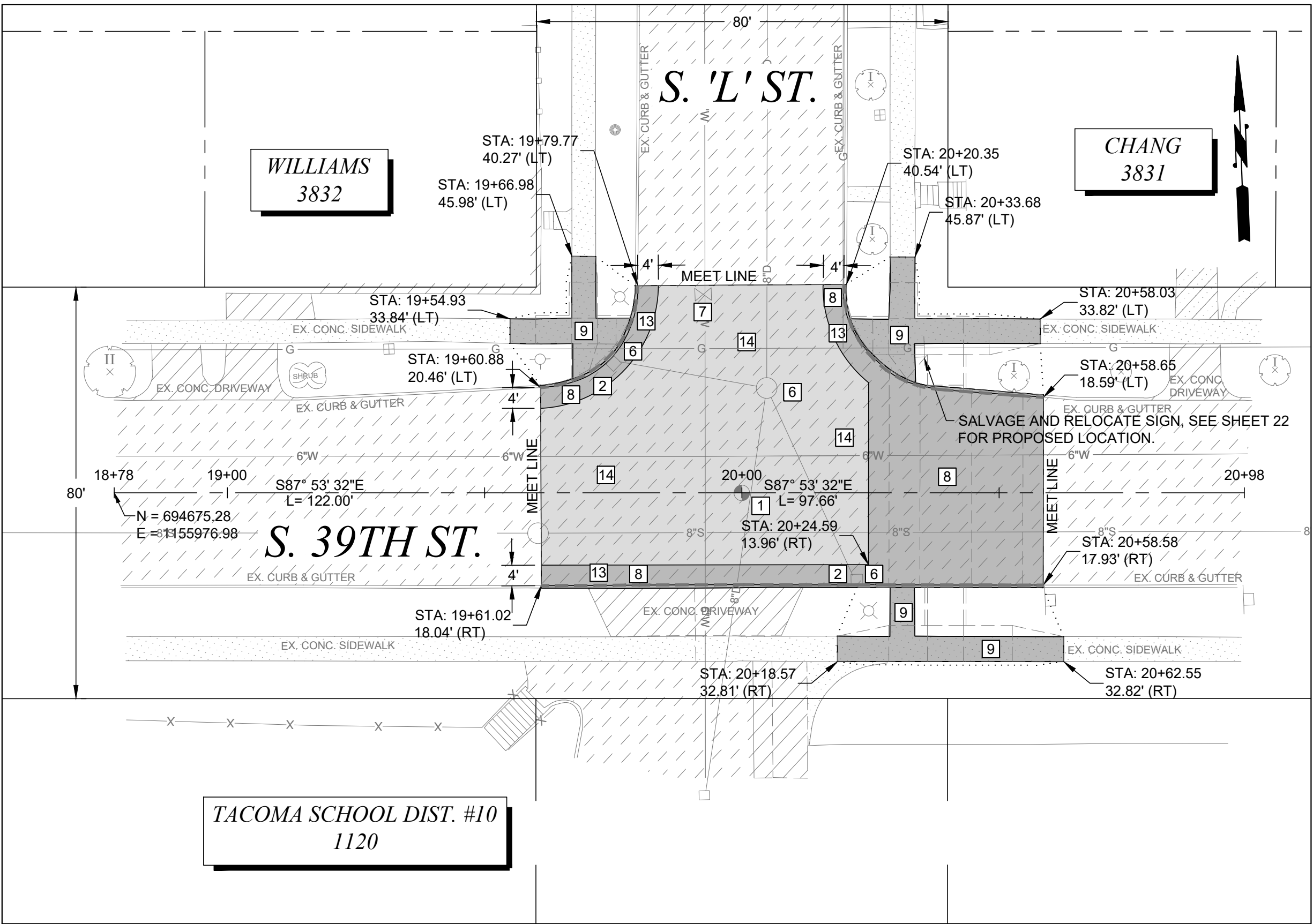
No payment will be made for “normal trench dewatering”.



- ### DEMOLITION NOTES
- 1 CITY OF TACOMA WILL PREPARE & SUBMIT WA DEPT. OF NATURAL RESOURCES APPLICATION FOR PERMIT TO REMOVE OR DESTROY A SURVEY MONUMENT. CONTRACTOR TO REMOVE MONUMENT COMPLETELY TO INSURE SUITABLE INSTALLATION OF STANDARD SURFACE BRASS DISK PER COT STANDARD PLAN SU-01
 - 2 PROVIDE INLET PROTECTION TO EXISTING CATCH BASIN PER SPECIFICATION 8-01 UNTIL REMOVAL OR END OF CONSTRUCTION ACTIVITIES
 - 3 TO BE REMOVED
 - 4 TO BE ADJUSTED BY OTHERS
 - 5 TO BE RELOCATED BY OTHERS
 - 6 ADJUST TO GRADE PER SPECIFICATION 7-05
 - 7 ADJUST EXISTING VALVE PER CITY OF TACOMA STANDARD SU-37
 - 8 REMOVE EXISTING ASPHALT PER SPECIFICATION SECTION 2-14.
 - 9 REMOVE CLASS 'C6' PAVEMENT PER SPECIFICATION SECTION 2-14.
 - 10 REMOVE EXISTING SIGNAGE AND POST. SIGNS SHALL BE RETURNED TO CITY OF TACOMA'S STREET OPERATIONS
 - 11 CONTRACTOR SHALL COORDINATE REMOVAL OF OVERHEAD "CROSSWALK" SIGN AND SPANWIRE WITH CITY OF TACOMA TRAFFIC MAINTENANCE SHOP AT (253)591-5287
 - 12 REMOVE EXISTING CATCH BASIN
 - 13 REMOVE EXISTING CURB AND GUTTER
 - 14 PLANE 2" BITUMINOUS PAVEMENT

- ### GENERAL NOTES:
1. ALL APPROACHES SHALL BE GRADED AND PLACED TO ENSURE POSITIVE DRAINAGE.
 2. ADJUSTING STRUCTURES SUCH AS MANHOLES AND VALVE CHAMBERS SHALL BE DONE PER C.O.T. STANDARD DETAIL SU-25 AND SU-37.
 3. WHEN REMOVING AN APPROACH THE LIMITS SHALL BE FROM THE EDGE OF THE APPROACH TO A MINIMUM OF 2' BEHIND THE NEW EDGE OF PAVEMENT.

UTILITY NOTE:
UTILITIES SHOWN ARE FROM SUB-CONSULTANT SURVEY AND CITY OF TACOMA GIS INFORMATION AND MAY NOT BE REPRESENTATIVE OF ACTUAL LOCATION. IT IS THE CONTRACTOR'S RESPONSIBILITY TO VERIFY THROUGH UTILITY LOCATE SERVICES, UTILITY AS-BUILT DRAWINGS, RECORD DRAWINGS AND POT-HOLING THE HORIZONTAL AND VERTICAL LOCATION OF EXISTING UTILITIES. ALL MEANS AND METHODS TO RESEARCH AND VERIFY EXISTING UTILITY LOCATIONS SHALL BE INCIDENTAL TO THE ASSOCIATED WORK.

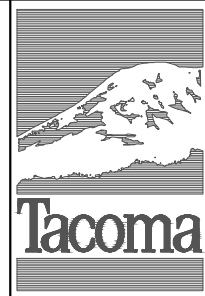


CITY OF TACOMA



CALL BEFORE YOU DIG
EXISTING UTILITIES ARE SHOWN IN APPROXIMATE LOCATIONS ONLY PER BEST AVAILABLE INFO, AND MAY BE INCOMPLETE. CONTRACTOR SHALL BE RESPONSIBLE FOR LOCATING, POT-HOLING AND AVOIDING ALL EXISTING UTILITIES.

CALL TWO BUSINESS DAYS BEFORE YOU DIG
(1-800-424-5555) OR VISIT ONLINE: www.callbeforeyoudig.org



ADDENDUM 1

NO

REVISION

DATE

APPD

FINAL CONSTRUCTION CHECKED

BY

DATE

FIELD BOOKS

FB 4210

DATE MAY 2022

DESIGNED BCW

DRAWN EJB

DRAWING NAME

SRTS_WHITMAN_DEMO.DWG

SCALE 1" = 20'

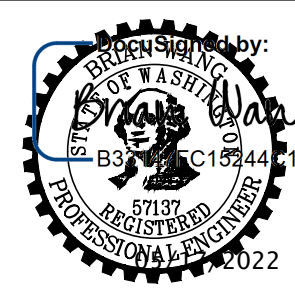
CHECKED DCS

PROJECT NAME

SRTS

REGISTERED

PROFESSIONAL ENGINEER



DocuSigned by:
Chris Larson
03687DCB8CFF4E8
ENGINEERING DIVISION MANAGER

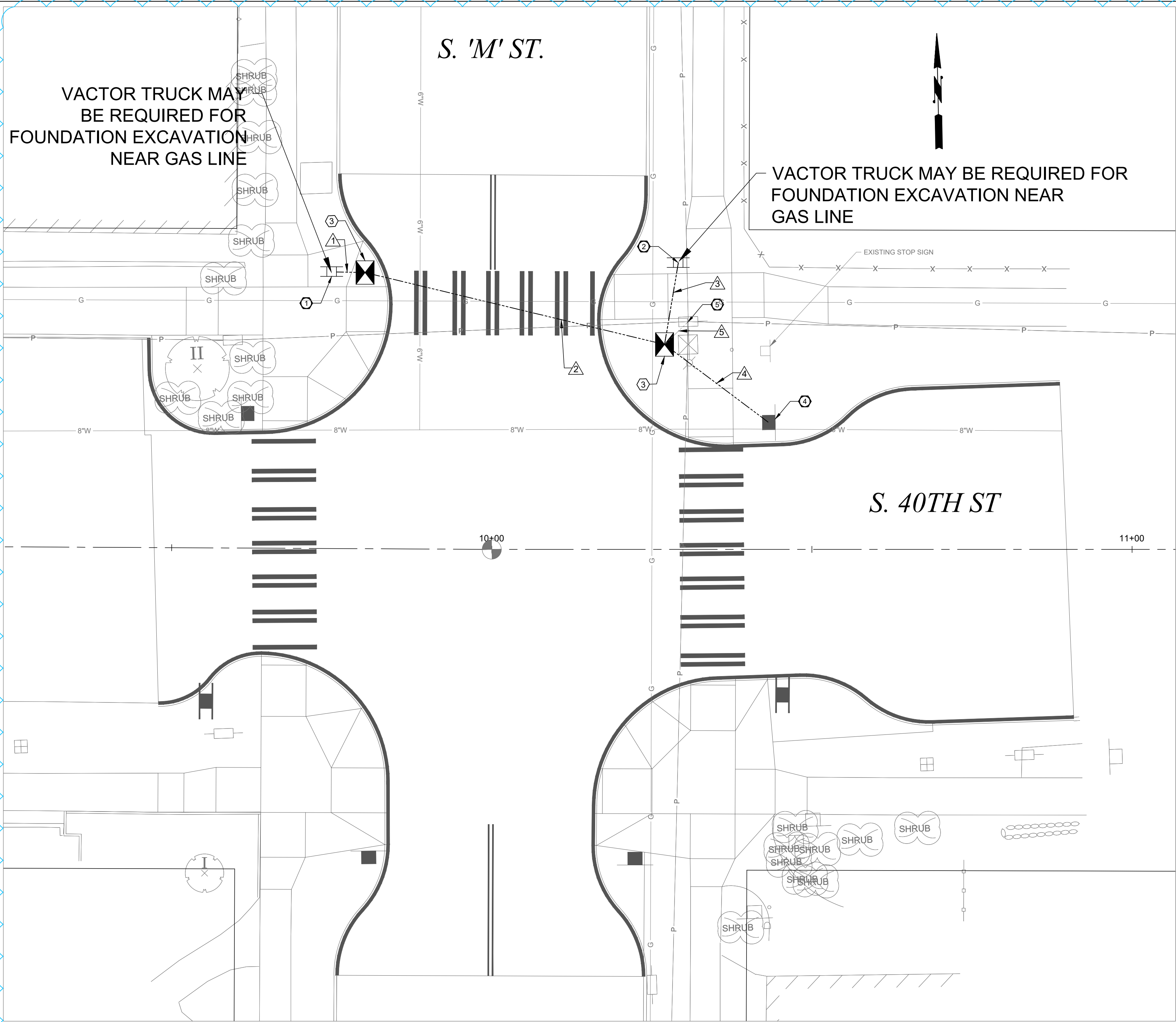
CITY OF TACOMA
DEPARTMENT OF PUBLIC WORKS

DEMOLITION PLANS
WHITMAN ELEMENTARY SCHOOL
VARIOUS INTERSECTIONS

PWK-00712

SHEET NO. 5

SHEET D-2 OF D2

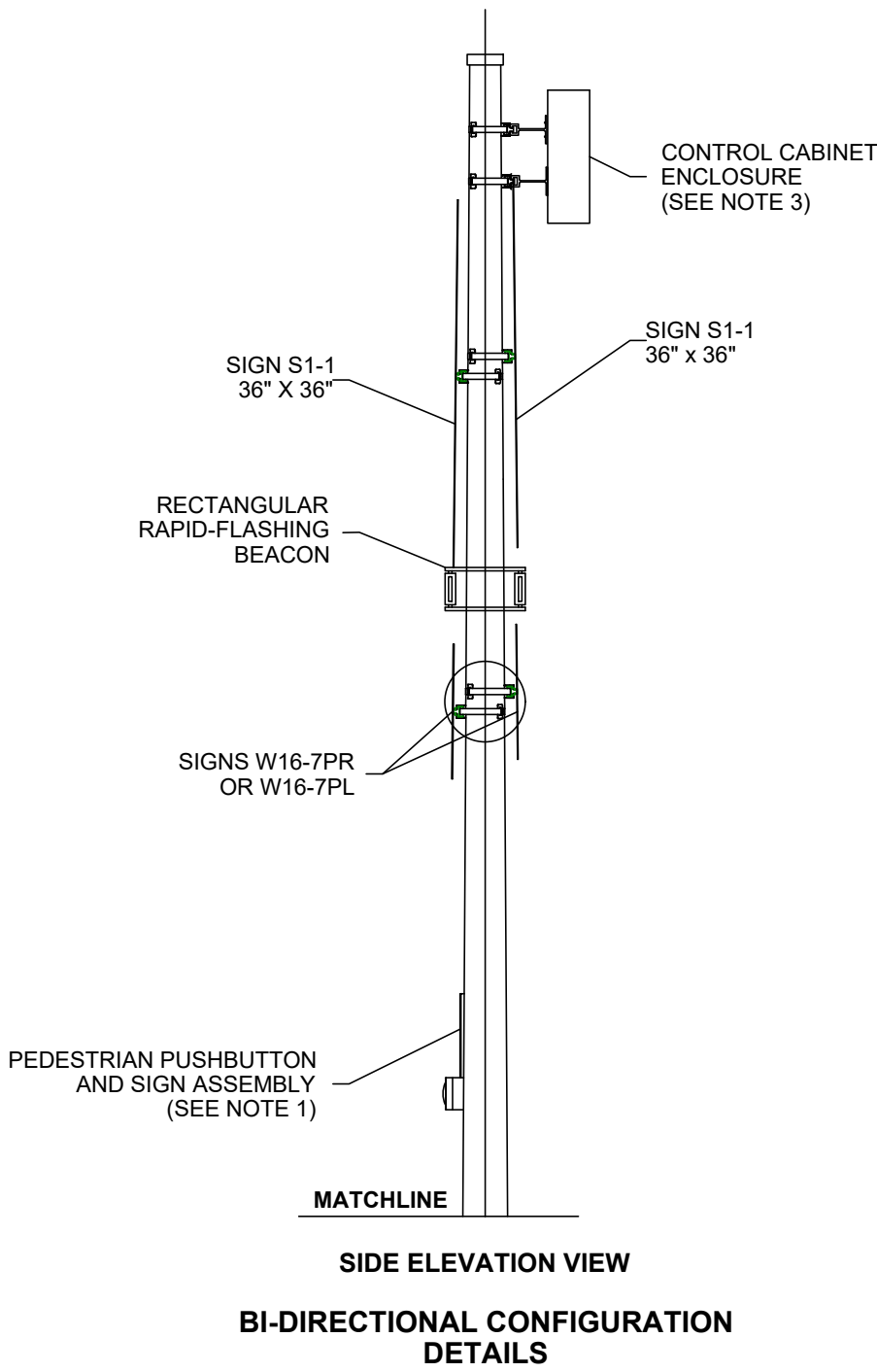


CONSTRUCTION NOTES

- ① FURNISH AND INSTALL FB POLE AND FOUNDATION PER WSDOT STANDARD PLAN J-21.10. FURNISH AND INSTALL DUAL SIDED RRFB ASSEMBLY WITH APS AND SIGNS PER CITY OF TACOMA SPECIFICATION 9-25.15 SYSTEM TO BE POWERED BY 120VAC. PUSHBUTTON TO BE WITHIN 10 INCHES OF LANDING.
- ② FURNISH AND INSTALL FB POLE AND FOUNDATION PER WSDOT STANDARD PLAN J-21.10. FURNISH AND INSTALL DUAL SIDED RRFB ASSEMBLY WITH APS AND SIGNS PER CITY OF TACOMA SPECIFICATION 9-25.15 SYSTEM TO BE POWERED BY 120VAC. PUSHBUTTON TO BE WITHIN 10 INCHES OF LANDING.
- ③ FURNISH AND INSTALL TYPE 1 JUNCTION BOX WITH CONCRETE BORDER PER CITY OF TACOMA STANDARD PLAN TS-08.
- ④
 - A. INSTALL EXISTING POLE ON NEW FOUNDATION PER WSDOT STANDARD PLAN J-21.10.
 - B. POLE TO HAVE NEW STOP SIGN AND NEW STREET NAME SIGN AS IDENTIFIED ON SHEET 22.
 - C. COORDINATE THE RELOCATION OF SCHOOL BEACON CONTROLLER WITH THE CITY OF TACOMA TRAFFIC SIGNAL SHOP.
- ⑤ EXISTING SERVICE LOCATION. CONNECT RRFB POWER TO EXISTING UNUSED BREAKER

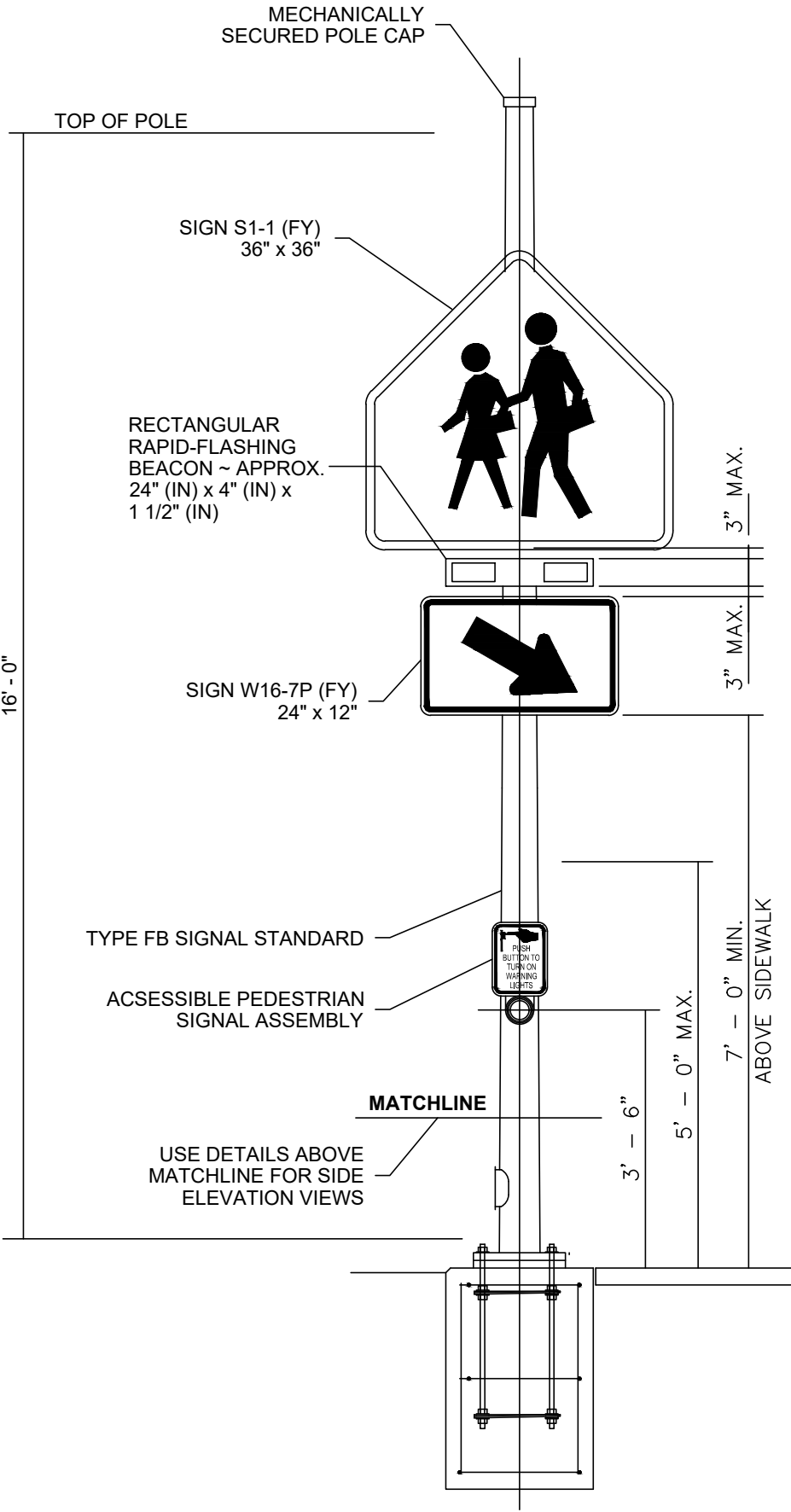
GENERAL NOTES

- 1. CONTRACTOR SHALL PROVIDE ALL MATERIALS SUBMITTALS TO CITY ENGINEER FOR CITY APPROVAL PRIOR TO START OF CONSTRUCTION.
- 2. CONTRACTOR SHALL COORDINATE CONNECTIONS TO EXISTING ELECTRICAL SYSTEM WITH CITY OF TACOMA TRAFFIC MAINTENANCE SHOP AT (253) 591-5287.
- 3. CONTROL CABINET ENCLOSURE SHALL BE SIZED BY THE RRFB MANUFACTURER. THE CONTROL CABINET SHALL BE MANUFACTURED PER TERMINAL CABINET REQUIREMENTS OF STANDARD SPECIFICATION SECTION 9-29.25.
- 4. RRFB DISPLAYS SHALL BE LED TYPE MEETING THE INTENSITY REQUIREMENTS OF SAE J595 FOR CLASS 1 YELLOW, BUT SHALL NOT EXCEED 1000 CANDELAS DURING DAYLIGHT AND 500 CANDELAS AFTER DARK.
- 4. LOCATION OF RRFB POLES IS NEAR THE EXISTING GAS LINE. THE CONTRACTOR SHALL LOCATE THE EXISTING GAS LINE PRIOR TO DIGGING THE FOUNDATION, AND A VECTOR TRUCK MAY BE REQUIRED TO DIG THE FOUNDATION.



LEGEND

DESCRIPTION	EXIST.	PROP.
CONSTRUCTION NOTE		#
SIGNAL POLE CONSTRUCTION NOTE		#
WIRE NOTE		#
RAPID-FLASHING BEACON		II
TYPE PPB POST W/PUSHBUTTON(S)		●
PEDESTRIAN PUSHBUTTON	4	
TYPE 1 SIGNAL POLE	⊗	
TYPE 1 JUNCTION BOX	⊠	⊠
UTILITY POLE WITH LIGHT	⊞	
UTILITY POLE/ POWER POLE	⊞	
GUY, ANCHOR	⌋	
TRAFFIC SIGNAL CONDUIT UG	—TS—	---
STREET LIGHTING CONDUIT UG	—LHT—	---
CONDUIT OH	----	----



RAPID-FLASHING BEACON

RRFB POLE DETAIL CHART								
STD. No.	FIELD LOCATION				POLE TYPE	FOUNDATION DEPTH (FT)		REMARKS
						ALTERNATE 1		
	STATION	OFFSET	LT.	RT.		3'RD.	3'SQ.	
1	9+78.8	43.35	X		RRFB	4.0'	3.0'	
2	10+28.0	44.74	X		RRFB	4.0'	3.0'	

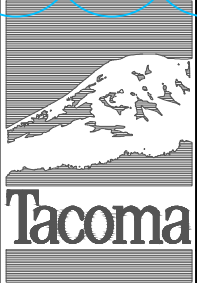
WIRE NOTES			
RUN NO.	CONDUIT	CONDUCTORS	NOTES
1	2"	2 - #10 POWER 1 - #10 GRND	
2	2"	2 - #10 POWER 1 - #10 GRND	
3	2"	2 - #10 POWER 1 - #10 GRND	
4	2"	2 - #10 POWER 1 - #10 GRND	
5	EXISTING	4 - #10 POWER 1 - #10 GRND	

NOTE: ALL CONDUITS ARE NEW UNLESS OTHERWISE NOTED

CALL BEFORE YOU DIG

EXISTING UTILITIES ARE SHOWN IN APPROXIMATE LOCATIONS ONLY PER BEST AVAILABLE INFO. AND MAY BE INCOMPLETE. CONTRACTOR SHALL BE RESPONSIBLE FOR LOCATING, POTHOLES AND AVOIDING ALL EXISTING UTILITIES.

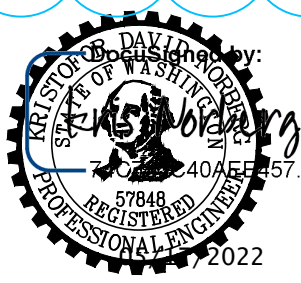
CALL TWO BUSINESS DAYS BEFORE YOU DIG
(1-800-424-5555) OR VISIT ONLINE: www.callbeforeyoudig.org



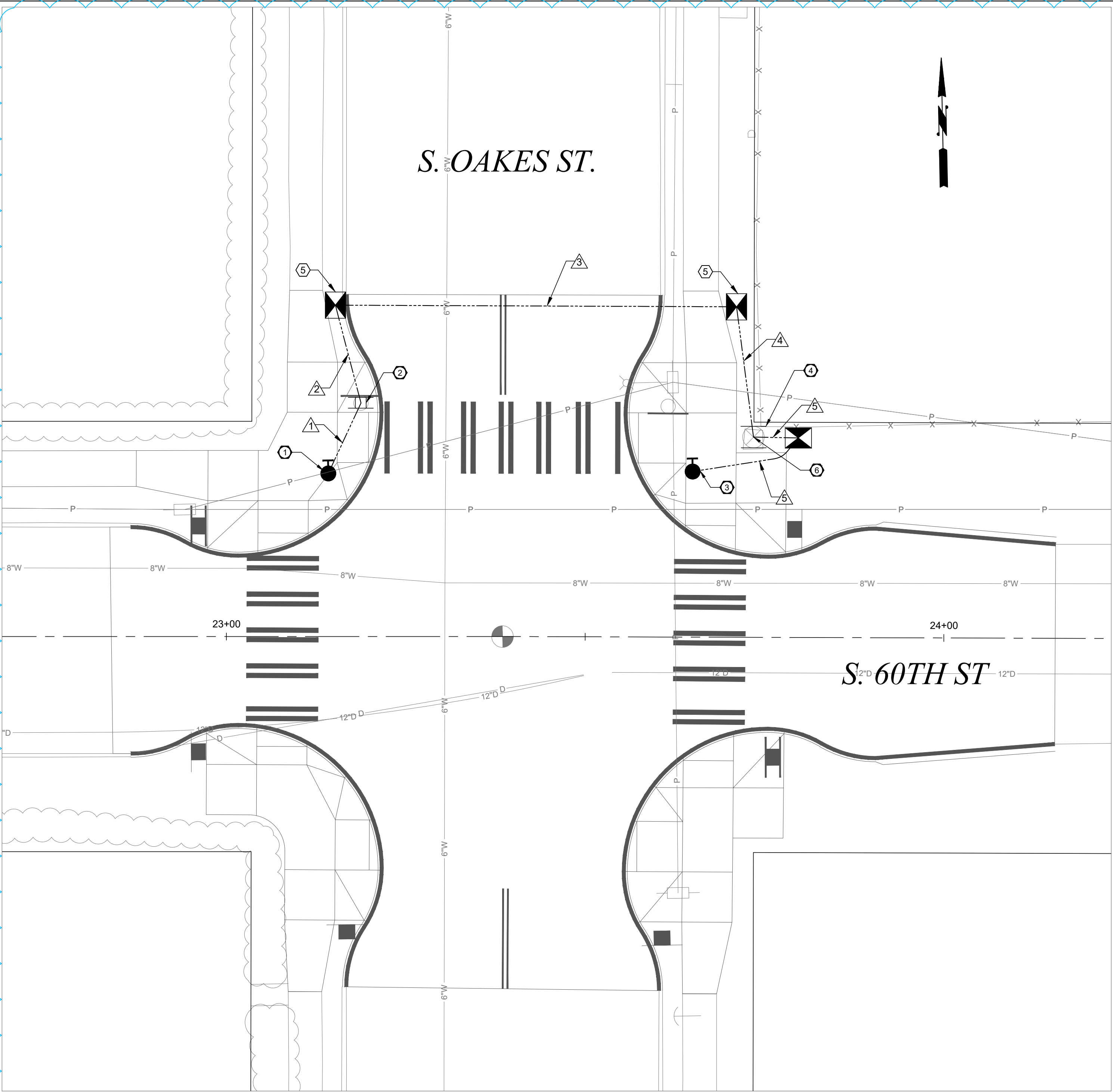
ADDENDUM 1

NO	REVISION	DATE	APPD

FINAL CONSTRUCTION CHECKED	DATE MAY 2022	SCALE 1" = 20'
BY AJL	CHECKED KDN	
DATE	DRAWN EJB	PROJECT NAME SRTS
FIELD BOOKS	DRAWING NAME SRTS_SGNL.DWG	



CITY OF TACOMA DEPARTMENT OF PUBLIC WORKS		
<div>DocuSigned by: <i>Chris Larson</i> 03687DCB8CFC4F8 ENGINEERING DIVISION MANAGER</div>	SIGNAL PLAN SAFE ROUTE TO SCHOOLS EDISON & WHITMAN ELEMENTARY	PWK-00712
		SHEET NO. 24
		SHEET SG-1 OF SG-2

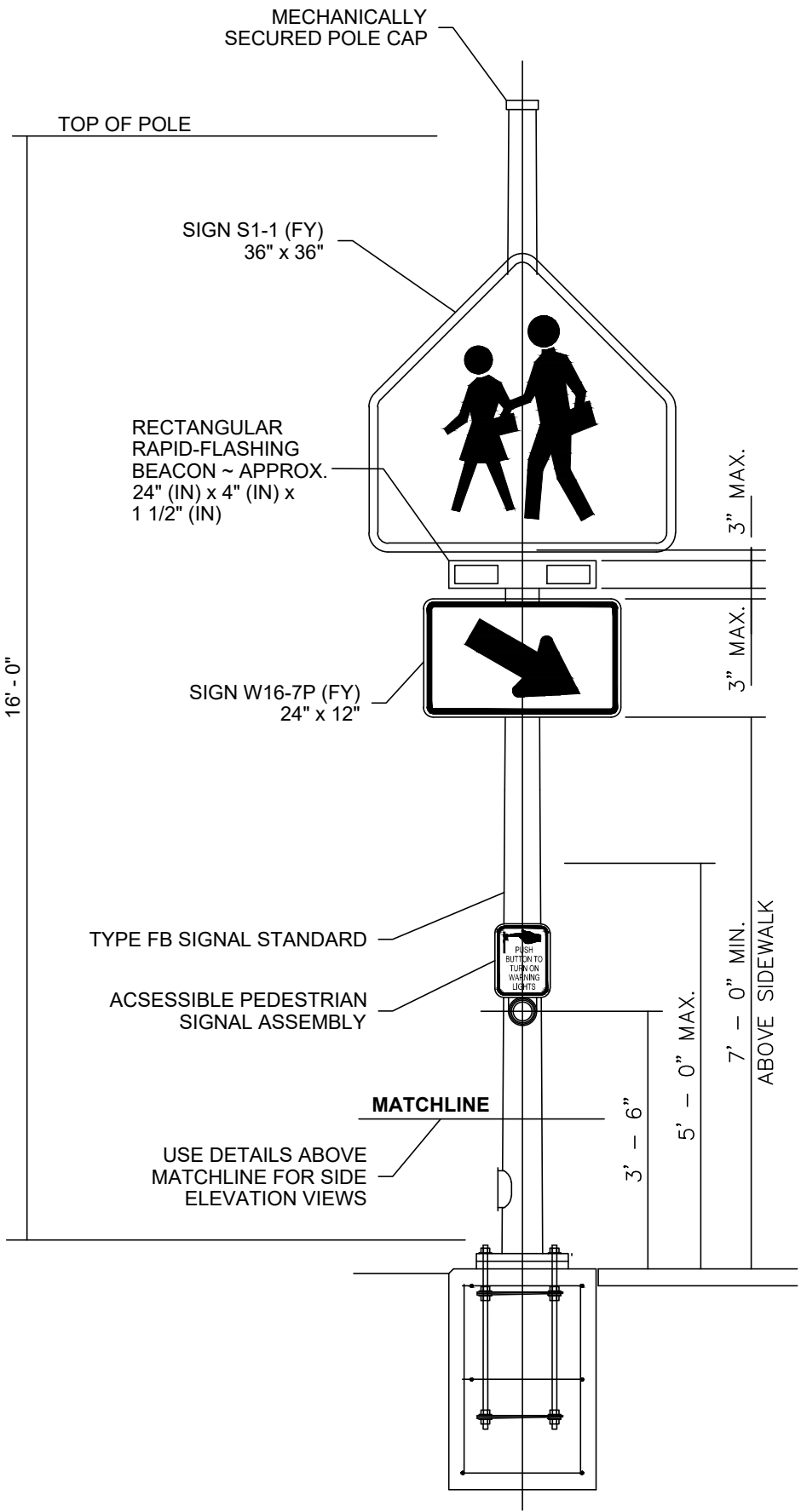
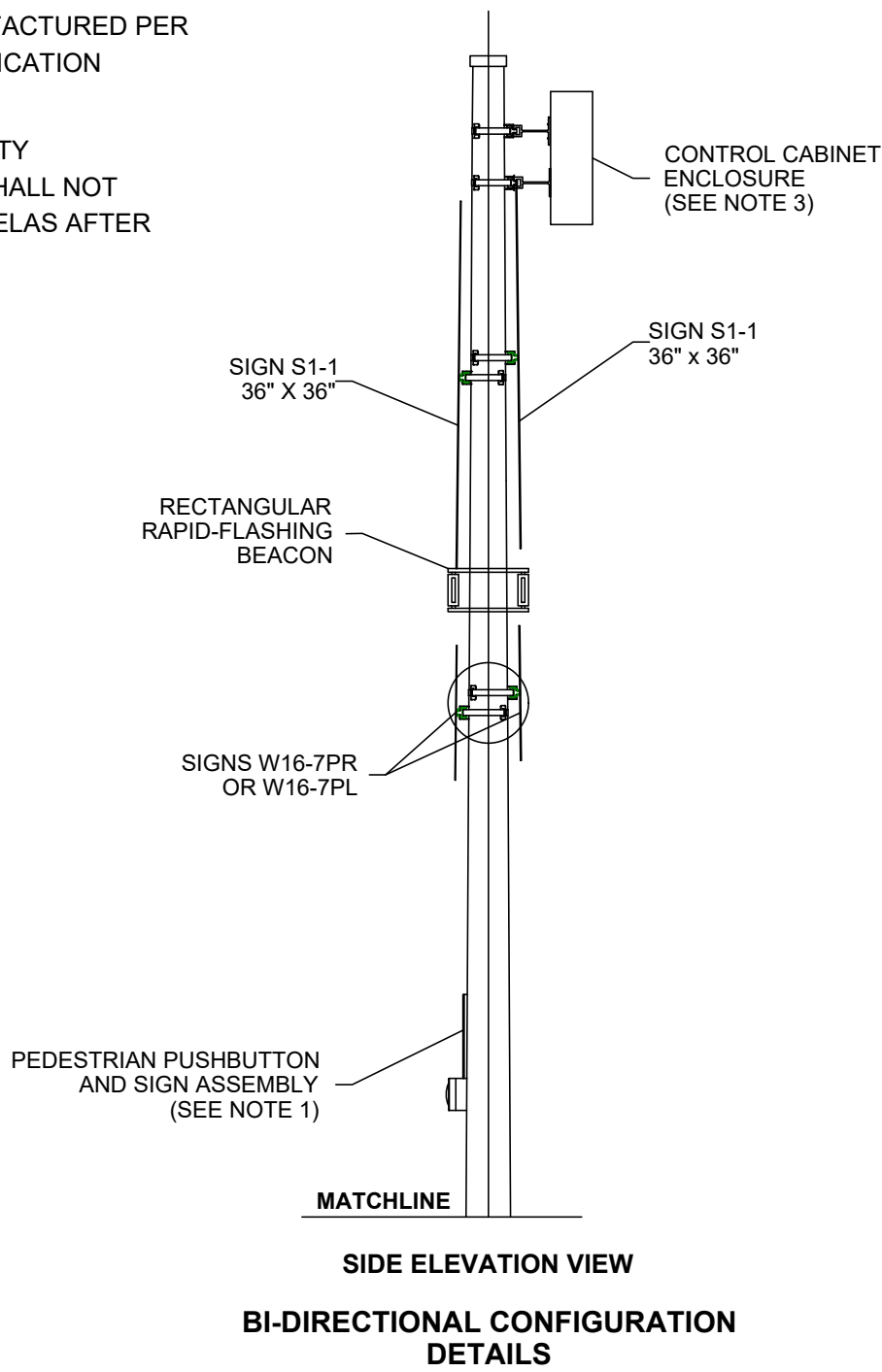


CONSTRUCTION NOTES

- ① FURNISH AND INSTALL ACCESSIBLE BREAKAWAY PPB POLE AND FOUNDATION PER WSDOT STANDARD PLAN J-20.15. FURNISH AND INSTALL APS AND SIGNS PER CITY OF TACOMA SPECIFICATION 9-25.15. SYSTEM TO BE POWERED BY 120VAC. PUSHBUTTON TO BE WITHIN 10 INCHES OF LANDING.
- ② FURNISH AND INSTALL FB POLE AND FOUNDATION PER WSDOT STANDARD PLAN J-21.10. FURNISH AND INSTALL DUAL SIDED RRFB ASSEMBLY AND SIGNS PER CITY OF TACOMA SPECIFICATION 9-25.15 SYSTEM TO BE POWERED BY 120VAC.
- ③ FURNISH AND INSTALL ACCESSIBLE BREAKAWAY PPB POLE AND FOUNDATION PER WSDOT STANDARD PLAN J-20.15. FURNISH AND INSTALL APS AND SIGNS PER CITY OF TACOMA SPECIFICATION 9-25.15. SYSTEM TO BE POWERED BY 120VAC. PUSHBUTTON TO BE WITHIN 10 INCHES OF LANDING.
- ④ FURNISH AND INSTALL DUAL SIDED RRFB ASSEMBLY AND SIGNS ON EXISTING STRAIN POLE PER CITY OF TACOMA SPECIFICATION 9-25.15. SYSTEM TO BE POWERED BY 125VAC.
- ⑤ FURNISH AND INSTALL TYPE 1 JUNCTION BOX WITH CONCRETE BORDER PER CITY OF TACOMA STANDARD PLAN TS-08.
- ⑥ A. INTERCEPT 2" CONDUIT FROM WEST OF EXISTING POLE BASE AND EXTEND INTO NEW JUNCTION BOX.
B. CONNECT RRFB TO NEW SINGLE POLE 20 AMP BREAKER IN EXISTING SERVICE ON EXISTING STRAIN POLE.

GENERAL NOTES

1. CONTRACTOR SHALL PROVIDE ALL MATERIALS SUBMITTALS TO CITY ENGINEER FOR CITY APPROVAL PRIOR TO START OF CONSTRUCTION.
2. CONTRACTOR SHALL COORDINATE CONNECTIONS TO EXISTING ELECTRICAL SYSTEM WITH CITY OF TACOMA TRAFFIC MAINTENANCE SHOP AT (253) 591-5287.
3. CONTROL CABINET ENCLOSURE SHALL BE SIZED BY THE RRFB MANUFACTURER. THE CONTROL CABINET SHALL BE MANUFACTURED PER TERMINAL CABINET REQUIREMENTS OF STANDARD SPECIFICATION SECTION 9-29.25.
4. RRFB DISPLAYS SHALL BE LED TYPE MEETING THE INTENSITY REQUIREMENTS OF SAE J695 FOR CLASS 1 YELLOW, BUT SHALL NOT EXCEED 1000 CANDELAS DURING DAYLIGHT AND 500 CANDELAS AFTER DARK.



RAPID-FLASHING BEACON

RRFB POLE DETAIL CHART						
STD. No.	FIELD LOCATION				FOUNDATION DEPTH (FT)	
					ALTERNATE 1	
	STATION	OFFSET	L.T.	RT.	POLE TYPE	REMARKS
1	23+14.20	22.74	X		PPB	3'RD. 3'SQ. 1.5'
2	23+18.75	32.65	X		RRFB	4.0' 3.0'
3	23+64.98	23.09	X		PPB	1.5'
4	23+73.30	27.90	X		EXISTING	TYPE IV STRAIN POLE

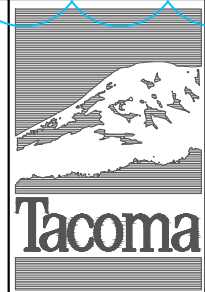
WIRE NOTES			
RUN NO.	CONDUIT	CONDUCTORS	NOTES
1	1"	BELDEN 28601A	
2	2"	2 - #10 POWER 1 - #10 GRND	
3	2"	2 - #10 POWER 1 - #10 GRND	
4	2"	2 - #10 POWER 1 - #10 GRND	
5	2"	2 - #10 POWER 1 - #10 GRND	
6	1"	BELDEN 28601A	

NOTE: ALL CONDUITS ARE NEW UNLESS OTHERWISE NOTED

CALL BEFORE YOU DIG

EXISTING UTILITIES ARE SHOWN IN APPROXIMATE LOCATIONS ONLY PER BEST AVAILABLE INFO, AND MAY BE INCOMPLETE. CONTRACTOR SHALL BE RESPONSIBLE FOR LOCATING, POTHOLES AND AVOIDING ALL EXISTING UTILITIES.

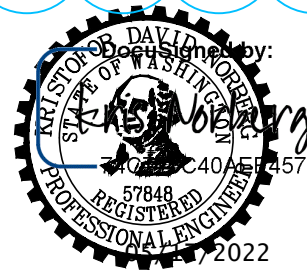
CALL TWO BUSINESS DAYS BEFORE YOU DIG (1-800-424-5555) OR VISIT ONLINE: www.callbeforeyoudig.org



ADDENDUM 1

NO		REVISION		DATE		APPD	

FINAL CONSTRUCTION CHECKED		DATE	SCALE
BY		MAY 2022	1" = 20'
DATE		DESIGNED	CHECKED
		AJL	KDN
FIELD BOOKS		DRAWN	PROJECT NAME
		EJB	SRTS
		DRAWING NAME	
		SRTS_SGNL.DWG	



CITY OF TACOMA		DEPARTMENT OF PUBLIC WORKS	
DocuSigned by:		SIGNAL PLAN	
Chris Larson		SAFE ROUTE TO SCHOOLS	
03687DCB86FF4C8		EDISON & WHITMAN ELEMENTARY	
ENGINEERING DIVISION MANAGER		PWK-00712	
		SHEET NO. 25	
		SHEET SG-2 OF SG-2	

BID PROPOSAL

SPECIFICATION NO. PW22-0114F

Edison, Whitman, Lincoln Safe Routes to Schools

The undersigned hereby certifies that he/she has examined the location and construction details of work as outlined on the Plans and Specifications for Project No. PWK-01034 and has read and thoroughly understands the Plans and Specifications and contract governing the work embraced in this improvement and the method by which payment will be made for said work, and hereby proposes to undertake and complete the work embraced in this improvement in accordance with said Plans, Specifications and contract and at the following schedule of rates and prices.

NOTE:

1. Unit prices of all items, all extensions and total amount of bid should be shown. Show unit prices in figures only.
2. The notations below the item numbers refer to the specification section where information may be found regarding each contract item. These notations are intended only as a guide and are not warranted to refer to all specification sections where information may be found.
3. The total base bid will be determined by adding the base bid of Schedule A, Schedule B.

All bid items are sorted in the following groups:

- **Schedule A: Lump Sum, Bid Items L1 – L12**
- **Schedule B: Roadway, Bid Items R1 – R45**

Addendum 1**Schedule A: Lump Sum, Bid Items L1 – L12**

<u>ITEM NO.</u>	<u>SPEC. NO.</u>	<u>ITEM DESCRIPTION</u>	<u>ESTIMATED QUANTITY</u>		<u>UNIT PRICE</u>	<u>TOTAL AMOUNT</u>
			<u>Unit</u>	<u>No.</u>		
L1	1-07	SPCC Plan	Lump Sum	1	Lump Sum	\$ _____
L2	1-09	Mobilization	Lump Sum	1	Lump Sum	\$ _____
L3	1-10	Pedestrian Traffic Control	Lump Sum	1	Lump Sum	\$ _____
L4	1-10	Project Temporary Traffic Control	Lump Sum	1	Lump Sum	\$ _____
L5	2-01	Clearing and Grubbing	Lump Sum	1	Lump Sum	\$ _____
L6	2-01	Certified Arborist	Lump Sum	1	Lump Sum	\$ _____
L7	2-02	Removal of Structures and Obstructions	Lump Sum	1	Lump Sum	\$ _____
L8	2-17	Subgrade Maintenance and Protection Plan	Lump Sum	1	Lump Sum	\$ _____
L9	8-01	Erosion/Water Pollution Control	Lump Sum	1	Lump Sum	\$ _____
L10	8-01	Stormwater Pollution Prevention Plan (SWPPP)	Lump Sum	1	Lump Sum	\$ _____
L11	8-02	Site Restoration	Lump Sum	1	Lump Sum	\$ _____
L12	8-21	Permanent Signing	Lump Sum	1	Lump Sum	\$ _____
Lump Sum Base Bid Total (Bid Items No. L1 – L12)					\$ _____ (1)	

Addendum 1

Schedule B: Roadway, Bid Items R1 – R45

ITEM NO.	SPEC. NO.	ITEM DESCRIPTION	ESTIMATED QUANTITY		UNIT PRICE	TOTAL AMOUNT
			Unit	No.		
R1	2-03	Roadway Excavation, Incl. Haul	Cu. Yd.	761	\$ _____	\$ _____
R2	2-03	Gravel Borrow Incl. Haul	Ton	30	\$ _____	\$ _____
R3	2-09	Structure Excavation Class B	Cu. Yd.	31	\$ _____	\$ _____
R4	2-09	Shoring or Extra Excavation Class B	Sq. Ft.	2765	\$ _____	\$ _____
R5	2-14	Remove Existing Pavement, Asphalt	Sq. Yd.	2745	\$ _____	\$ _____
R6	2-14	Remove Existing Pavement, Concrete	Sq. Yd.	717	\$ _____	\$ _____
R7	2-14	Remove Existing Pavement, CA	Sq. Yd.	40	\$ _____	\$ _____
R8	2-15	Remove Curb	Lin. Ft.	1461	\$ _____	\$ _____
R9	2-16	Remove Catch Basin	Each	5	\$ _____	\$ _____
R10	4-04	Crushed Surfacing Top Course	Ton	356	\$ _____	\$ _____
R11	4-04	Crushed Surfacing Base Course	Ton	622	\$ _____	\$ _____
R12	5-04	Planing Bituminous Pavement	Sq. Yd.	2381	\$ _____	\$ _____
R13	5-04	HMA CL 1/2" PG 58H-22 for Temporary Pavement Patch	Ton	51	\$ _____	\$ _____
R14	5-04	HMA for Approach CL 1/2" PG 58H-22	Sq. Yd.	20	\$ _____	\$ _____
R15	7-02	HMA CL 1/2" PG 58H-22	Ton	702	\$ _____	\$ _____

Contractor's Name: _____
Specification No. PW22-0114F
Page 3 of 6

Addendum 1

<u>ITEM NO.</u>	<u>SPEC. NO.</u>	<u>ITEM DESCRIPTION</u>	<u>ESTIMATED QUANTITY</u>		<u>UNIT PRICE</u>	<u>TOTAL AMOUNT</u>
			<u>Unit</u>	<u>No.</u>		
R16	5-05	Cement Conc. Pavement Raised Crossing	Each	3	\$ _____	\$ _____
R17	7-05	Adjust Existing Catch Basin, Furnish new Frame and Grate	Each	8	\$ _____	\$ _____
R18	7-05	Adjust Existing Valve Chamber to Grade	Each	11	\$ _____	\$ _____
R19	7-05	Catch Basin Type 1	Each	10	\$ _____	\$ _____
R20	7-05	Connect New Sewer Pipe To Existing Structure	Lin. Ft.	9	\$ _____	\$ _____
R21	7-05	Reconnect Existing Sewer Pipe to New Structure	Each	3	\$ _____	\$ _____
R22	7-05	Adjust Existing Manhole Furnish New Frame and Lid	Each	11	\$ _____	\$ _____
R23	7-08	Structure Excavation Class B	Cu. Yd.	177	\$ _____	\$ _____
R24	7-08	CDF for Pipe Abandonment	Cu. Yd.	2	\$ _____	\$ _____
R25	7-08	Plugging Existing Pipe	Each	1	\$ _____	\$ _____
R26	7-17	Removal and Replacement of Unsuitable Material Incl. Haul	Cu. Yd.	118	\$ _____	\$ _____
R27	7-17	PVC Storm Sewer Pipe 12 In. Diam.	Lin. Ft.	270	\$ _____	\$ _____
R28	7-17	Ductile Iron Storm Sewer Pipe 12 In. Diam.	Lin. Ft.	32	\$ _____	\$ _____
R29	8-02	Plant Selection 'Tsuga Mertensia'	Each	9	\$ _____	\$ _____
R30	8-02	Plant Selection 'Styrax Japonicus'	Each	9	\$ _____	\$ _____
R31	8-04	Cement Conc. Traffic Curb and Gutter	Lin. Ft.	1610	\$ _____	\$ _____

Contractor's Name: _____

Specification No. PW22-0114F

Addendum 1

<u>ITEM NO.</u>	<u>SPEC. NO.</u>	<u>ITEM DESCRIPTION</u>	<u>ESTIMATED QUANTITY</u>		<u>UNIT PRICE</u>	<u>TOTAL AMOUNT</u>
			<u>Unit</u>	<u>No.</u>		
R32	8-06	Cement Conc. Driveway Entrance	Sq. Yd.	71	\$ _____	\$ _____
R33	8-13	Poured Monument	Each	7	\$ _____	\$ _____
R34	8-14	Cement Conc. Sidewalk	Sq. Yd.	433	\$ _____	\$ _____
R35	8-14	Cement Conc. Curb Ramp	Each	44	\$ _____	\$ _____
R36	8-20	Remove and Relocate Junction Box	Each	2	\$ _____	\$ _____
R37	8-20	Pedestrian-Activated Crosswalk Beacon System, S 40th & M St., Complete	Each	1	\$ _____	\$ _____
R38	8-20	Pedestrian-Activated Crosswalk Beacon System, S 60th & Oakes St., Complete	Each	1	\$ _____	\$ _____
R39	8-22	Plastic Sharrow Symbol	Each	1	\$ _____	\$ _____
R40	8-22	Plastic Line	Lin. Ft.	136	\$ _____	\$ _____
R41	8-22	Plastic Traffic Letter	Lin. Ft.	12	\$ _____	\$ _____
R42	8-22	Plastic Crosswalk	Lin. Ft.	2170	\$ _____	\$ _____
R43	8-22	Plastic Chevron Symbol	Each	6	\$ _____	\$ _____
R44	8-40	Traffic Circle	Each	1	\$ _____	\$ _____
R45	8-41	Speed Hump	Each	1	\$ _____	\$ _____
Roadway Base Bid Total (Bid Items No. R1 – R45)					\$ _____ (2)	
TOTAL BASE BID (1) + (2) (Not Including Sales Tax)					\$ _____ (3)	

Contractor's Name: _____
Specification No. PW22-0114F
Page 5 of 6

Addendum 1

Proposal for Incorporating Recycled Materials into the Project

In compliance with a new law that went into effect January 1, 2016 (SHB1695), the Bidder shall propose below, the total percent of construction aggregate and concrete materials to be incorporated into the Project that are recycled materials. Calculated percentages must be within the amounts allowed in Section 9-03.21(1)E, Table on Maximum Allowable Percent (By Weight) of Recycled Material, of the Standard Specifications.

Proposed total percentage: _____ percent (%)

Note: Use of recycled materials is highly encouraged within the limits shown above, but does not constitute a Bidder Preference, and will not affect the determination of award, unless two or more lowest responsive Bid totals are exactly equal, in which case proposed recycling percentages will be used as a tie-breaker, per the APWA GSP in Section 1-03.1 of the Special Provisions. Regardless, the Bidder's stated proposed percentages will become a goal the Contractor should do its best to accomplish. Bidders will be required to report on recycled materials actually incorporated into the Project, in accordance with the APWA GSP in Section 1-06.6 of the Special Provisions.

Bidder: _____

Signature of Authorized Official: _____

Date: _____

Addendum 1

SPECIAL REMINDER TO ALL BIDDERS

HEALTH & SAFETY: Be sure to comply with all City of Tacoma health and safety requirements.

PLEASE NOTE: Be sure you have complied with all specifications and requirements and have signed all required documents.

YOUR ATTENTION IS PARTICULARLY CALLED to the following forms, which must be executed in full and submitted with your bid response:

1. BID PROPOSAL: The unit prices bid must be shown in the space provided. Check your computations for omissions and errors.
2. SIGNATURE PAGE: To be filled in and executed by a duly authorized officer or representative of the bidding entity. If the bidder is a subsidiary or doing business on behalf of another entity, so state, and provide the firm name under which business is hereby transacted.
3. BID BOND: The Bid Bond must be executed by the person legally authorized to sign the bid, and must be properly signed by the representatives of the surety company unless the bid is accompanied by a certified check. If Bid Bond is furnished, the form furnished by the City must be followed; no variations from the language thereof will be accepted. The amount of the Bid Bond must be not less than 5% of the total amount bid.
4. CERTIFICATION OF COMPLIANCE WITH WAGE PAYMENT STATUTES: Bidder shall complete this form in its entirety to ensure compliance with state legislation (SHB 2017).
5. STATE RESPONSIBILITY AND RECIPROCAL BID PREFERENCE INFORMATION: Bidder shall complete this form in its entirety to ensure compliance with state legislation (SHB 2010).
6. LIST OF SUBCONTRACTOR CATEGORIES OF WORK: Bidder shall list all subcontractor(s) proposed to perform the work of heating, ventilation and air conditioning, plumbing, as described in Chapter 18.106 RCW and electrical as described in Chapter 19.28 RCW. Bidder shall also list all subcontractor(s) proposed to perform the work of structural steel installation and/or rebar installation.

FAILURE TO LIST SUBCONTRACTORS WILL RESULT IN THE BID BEING NON-RESPONSIVE AND THEREFORE VOID.

7. STATEMENT OF QUALIFICATIONS: The Contractor or subcontractor shall fill out this form in its entirety proving they meet the requirements as outlined in these specifications. It shall be the sole determination of the Engineer to determine if the Contractor/subcontractor does in fact meet the requirements. This is a condition of award of the Contract.
8. EQUITY IN CONTRACTING (EIC) UTILIZATION FORM: Bidders shall complete the Equity in Contracting Utilization Form in accordance with the City of Tacoma Equity in

Addendum 1

Contracting Regulations Manual and Chapter 1.07 of the City of Tacoma Municipal Code (TMC). This form shall be fully and accurately completed and returned with submission of the Bid and will be used to determine if the Bidder is in compliance with the EIC regulations and the TMC.

As part of the City of Tacoma's ongoing work to address past disparities and to increase the City's contracting with and utilization of historically underutilized businesses, the Equity in Contracting (EIC) Program places requirements on City contracts for utilization of businesses certified by the Washington State Office of Minority and Women's Business Enterprise and approved by the Equity in Contracting Program ("Certified Businesses"). The EIC Program also provides guidance and technical assistance to Certified Businesses who are interested in providing supplies, services and public works to the City of Tacoma. The EIC Program requirements are contained in Tacoma Municipal Code Chapter 1.07.

See City of Tacoma – Equity In Contracting Program section for additional information.

POST AWARD FORMS EXECUTED UPON AWARD:

- A. CONTRACT: Must be executed by the successful bidder.
- B. PAYMENT BOND TO THE CITY OF TACOMA: Must be executed by the successful bidder and his/her surety company.
- C. PERFORMANCE BOND TO THE CITY OF TACOMA: Must be executed by the successful bidder and his/her surety company.
- D. CERTIFICATE OF INSURANCE: Shall be submitted with all required endorsements.
- E. LEAP UTILIZATION PLAN: Shall be submitted at the Pre-Construction Meeting.
- F. GENERAL RELEASE.

CODE OF ETHICS: The successful bidder agrees that its violation of the City's Code of Ethics contained in TMC Chapter 1.46 shall constitute a breach of the contract subjecting the contract to termination.

LOCAL EMPLOYMENT AND APPRENTICESHIP TRAINING PROGRAM (LEAP):

The Local Employment and Apprenticeship Training Program (LEAP) has been adopted to counteract economic and social ills, which accompany high rates of unemployment within the City of Tacoma. The Tacoma City Council established the mandatory LEAP program for public works contracts pursuant to Ordinance No. 28520. The primary goal is to provide an opportunity for City of Tacoma residents and Tacoma Public Utilities ratepayers to enter apprenticeship programs, acquire skills, and perform work that will provide living wages.

LEAP Goals:

1. Local Employment Utilization Goal – Prime contractor is required to ensure that 15 percent of the labor hours worked on the project are performed by residents of the City

Addendum 1

of Tacoma or local economically distressed areas, whether or not such person is an Apprentice.

2. Apprentice Utilization Goal - Prime contractor is required to ensure that 15 percent of the labor hours worked on the project are performed by Apprentices who reside in the Tacoma Public Utilities service area.

NOTE: If both goals are assigned to this project, the two goals can be satisfied concurrently if the prime contractor utilizes individuals who simultaneously meet the requirements of both goals, such as an apprentice who resides in the City of Tacoma or in a local economically distressed area.

See City of Tacoma – Local Employment and Apprenticeship Training Program section for additional information.