

**CITY OF TACOMA
DEPARTMENT OF PUBLIC UTILITIES
TACOMA WATER**

SPECIFICATION NO. PW23-0241F

**CONSTRUCTING WATER MAINS
in accordance with approved plans for**

WATER MAIN REPLACEMENT PROJECT NO. MRP 2016-39

STREET INITIATIVE PACKAGE NO. 35

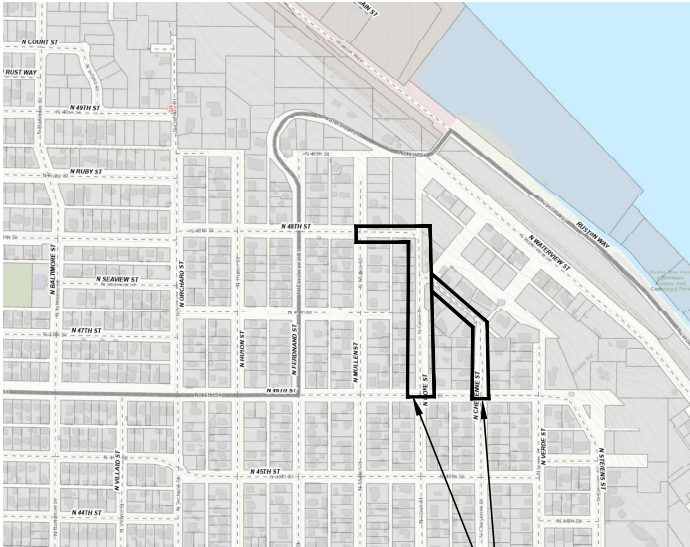
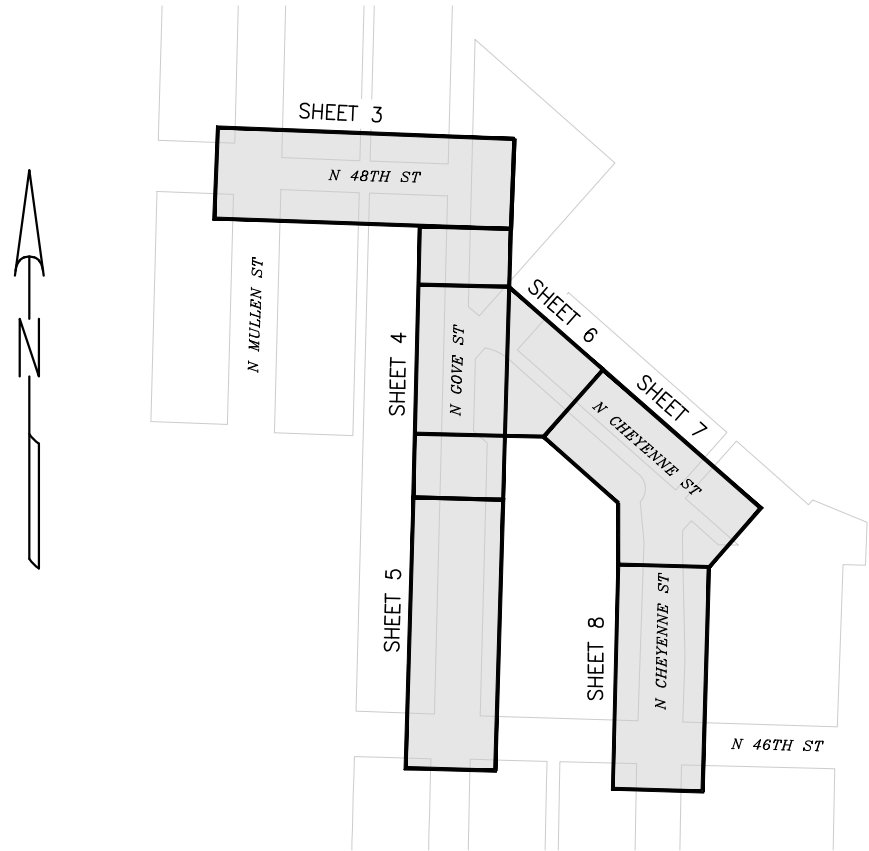


10/18/2023

Troy Saghafi, P.E.
Tacoma Water
Tacoma Public Utilities
MRP 2016-39

MAIN REPLACEMENT PROJECT 2016-39

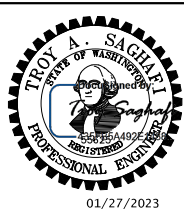
STREET INITIATIVE PACKAGE 35





PROJECT LOCATION

SHEET 1	COVER SHEET	
SHEET 2	LEGEND AND ABBREVIATIONS	
SHEET 3	NORTH 48TH STREET	STA 10+00 TO STA 14+50
SHEET 4	NORTH GOVE STREET	STA 14+50 TO STA 19+00
SHEET 5	NORTH GOVE STREET	STA 19+00 TO STA 21+89
SHEET 6	NORTH CHEYENNE STREET	STA 20+26 TO STA 21+50
SHEET 7	NORTH CHEYENNE STREET	STA 21+50 TO STA 25+50
SHEET 8	NORTH CHEYENNE STREET	STA 25+50 TO STA 28+59
SHEET 9	SURVEY CONTROL PLAN	

Addendum 1



TOPOGRAPHY INFORMATION WAS PROVIDED BY TACOMA WATER JEH				 TACOMA WATER TACOMA PUBLIC UTILITIES		CITY OF TACOMA DEPARTMENT OF PUBLIC UTILITIES WATER DIVISION	
3				MAIN REPLACEMENT PROJECT 2016-39 WATER MAINS AND FIRE HYDRANTS FOR STREETS INITIATIVE PACKAGE 35 COVER SHEET			
2				DATE DECEMBER 2019			
1				DESIGNED MDY			
NO				DRAWN MDY			
REVISION				CHECKED TAS			
REFERENCE				APPROVED  PLANNING & ENGINEERING DIVISION			
FIELD BOOK				MAP NO. 212/95			
BLUE BOOK 08				WBS # WTR-00478-27			
SURVEYING 20000117403				ENGINEERING WTR-00478-27-01			
INSPECTION 20000091300				DRAWING NO 2016-39			
SHEET 1 OF 9							

STANDARD NOTES

ABAN	ANGLE	MAX	MAXIMUM	
AC	ABANDONED	MH	MANHOLE	
AC	ASBESTOS CEMENT	MIC	MON IN CASE	
APP'D	APPROVED	MIL	MILLIMETER	
APPROX	APPROXIMATELY	MIN	MINIMUM	
ASPH	ASPHALT	MJ	MECHANICAL JOINT	
AVE	AVENUE	MON	MONUMENT	
		MRP	MAIN REPLACEMENT PROJECT	
B/F	BUTTERFLY			
B/O	BLOW OFF	N	NORTH	
B/O ASSY	BLOW OFF ASSEMBLY	N/A	NOT APPLICABLE	
BLVD	BOULEVARD	NGVD	NATIONAL GEODETTIC VERTICAL DATUM	
BM	BENCH MARK	NO	NUMBER	
BNSF	BURLINGTON NORTHERN SANTA FE RAILWAY	NTS	NOT TO SCALE	
BVC	BEGIN VERTICAL CURVE			
		OD	OUTSIDE DIAMETER	
CB	CATCH BASIN	OH	OVERHEAD	
CDF	CONTROLLED DENSITY FILL			
CI	CAST IRON	PC	PIERCE COUNTY	
CL	CENTERLINE OR CLASS	PC	PRIVATE CONTRACT	
CO	CLEAN OUT	PC	POINT OF CURVE	
CON	CONCRETE	PE	POLYETHYLENE	
CONN	CONNECTION	PG	PERFORMANCE GRADE	
CONSTR	CONSTRUCTION	PI	POINT OF HORIZONTAL INTERSECTION	
COT	CITY OF TACOMA	PKWY	PARKWAY	
CSBC	CRUSHED SURFACING BASE COURSE	PL	PLACE	
CSTC	CRUSHED SURFACING TOP COURSE	PLS	PLASTIC	
CT	COURT	PRJ	PROJECT	
CULV	CULVERT	PROP	PROPOSED	
CY	CUBIC YARD	P/ROW	PROPOSED RIGHT OF WAY	
		PRP	PUBLIC ROAD PROJECT	
D	DELTA	PRV	PRESSURE REDUCING VALVE	
DI	DUCTILE IRON	PT	POINT OF TANGENCY	
DIA	DIAMETER	PVC	POLYVINYL CHLORIDE	
DWG	DRAWING	PVI	POINT OF VERTICAL INTERSECTION	
DWY	DRIVEWAY	PVT	POINT OF VERTICAL TANGENCY	
		PWA	PUBLIC WORKS ADMINISTRATION	
E	EAST			
EA	EACH	R	RADIUS	
ELEC	ELECTRICAL	R	RANGE	
ELEV	ELEVATION	R/R	RAILROAD	
EOP	EDGE OF PAVEMENT	ROW	RIGHT OF WAY	
EQ	EQUATION	R/W	RIGHT OF WAY	
EVC	END VERTICAL CURVE	RD	ROAD	
EX	EXISTING	RDWY	ROADWAY	
FFE	FINISHED FLOOR ELEVATION	S	SOUTH	
FH	FIRE HYDRANT	SAN	SANITARY	
FLG	FLANGE	SBM	SURFACE BRASS MON	
FM	FORCE MAIN	SEB	SMALL END BELL	
FT	FOOT	SEC	SECTION	
		SES	SMALL END SPIGOT	
GALV	GALVANIZED	SP	SPECIAL	
GIS	GEOGRAPHIC INFORMATION SYSTEM	SSB	SUB SURFACE BRASS	
GM	GAS METER	SSS	SUB SURFACE STONE	
GND	GROUND	ST	STREET	
GV	GATE VALVE	STL	STEEL	
		SW	SIDEWALK	
HDPE	HIGH DENSITY POLYETHYLENE			
HMA	HOT MIX ASPHALT	T	TANGENT	
HP	HIGH PRESSURE	T	TOWNSHIP	
HYD	HYDRANT	TEMP	TEMPORARY	
		TL	TRUE LENGTH	
ID	INSIDE DIAMETER	TYP	TYPICAL	
IE	INVERT ELEVATION			
IN	INCH	UG	UNDERGROUND	EX OR SU
IP	INTERMEDIATE PRESSURE	UNK	UNKNOWN	
JB	JUNCTION BOX	VERT	VERTICAL	
JUT	JOINT UTILITY TRENCH	VC	VERTICAL CURVE	
L	LENGTH	W	WEST	
LC	LENGTH OF CHORD	W/	WITH	
LF	LINEAR FEET	WDP	WATER DIVISION PROJECT	NEW POLY
LEB	LARGE END BELL	WM	WILLAMETTE MERIDIAN	
LES	LARGE END SPIGOT	WO	WORK ORDER	
LID	LOCAL IMPROVEMENT DISTRICT			
		YR	YEAR	

WHEN REQUIRED IN THE SPECIFICATION OR ON THE PLAN, THE WATER MAIN FITTINGS, VALVES, LATERALS AND APPURTENANCES SHALL BE ENCASED WITH A MIN 8-MIL THICK B-BIO ENHANCED POLYETHYLENE ENCASEMENT, PER SECTION 7-09.3(17) OF THE SPECIAL PROVISIONS.



NOTES

1. This Standard Plan shall only apply to streets that exempt from the City of Tacoma's Restoration Policy. See Standard Plan SU-15A for any streets not exempt from this policy.
2. Temporary Surface Restoration.
Arterial, industrial areas and/or roads with bus traffic: Temporary patches shall be compacted and leveled to a minimum of 3-inches of hot-mix asphalt (HMA).
Residents and alleys: Temporary patches shall be compacted and leveled to a minimum of 2-inches of either HMA or cold-mix asphalt. Temporary patches between October 1st and March 31st shall be made with HMA unless otherwise approved.
3. All permanent final patches shall be rectangular in shape and constructed parallel and perpendicular to the road centerline.
4. Where existing pavement defects are in close proximity to the new cut, the Inspector may require additional pavement removal to eliminate the pavement defect.
5. The final cut edge of paved surfaces shall be smooth and straight, consistent with grinding or saw cutting devices. No jagged, broken or undermined edges are allowed. Cutting wheel run-out beyond the limits of the opening shall be filled in accordance with WSDOT Standard Specification 5-03.3(B) for concrete and 5-04.3(C) for asphalt concrete surfaces.
6. Final compaction of HMA shall be 91% of maximum density.
Testing shall be performed by a certified independent testing laboratory or certified tester, as approved by the City's Construction Division. Tests shall be completed and reports identifying the project number submitted to the City Construction Division with 48 hours of test.
All joints between the new and original asphalt pavement shall be sealed with hot asphalt or asphalt emulsion and covered with dry paving sand before the asphalt solidifies. Existing surfaces shall be prepared in accordance with WSDOT Standard Specification 5-04.3(A) prior to placing any new pavement surfaces.
8. HMA pavement shall not be placed over CDF until approved by the City.
9. If remaining pavement adjacent to the patch is less than 3" wide, remove and replace with asphalt concrete pavement to match existing (minimum 2").

TABLE 1

PAVEMENT REPLACEMENT DEPTH IN CUT BACK ZONE

	MIN.	MAX.
ARTERIALS, INDUSTRIAL AREAS & ROADS WITH BUS TRAFFIC	MATCH EXISTING 1" OR 4", WHICHEVER IS GREATER	6"
RESIDENTIALS AND ALLEYS	MATCH EXISTING 1" OR 3", WHICHEVER IS GREATER	4"

Diagram labels: CUT BACK ZONE, SAWCUT, HMA PAVEMENT, EXISTING ASPHALT OR OIL MAT PAVEMENT, CRUSHED SURFACING (CSTC), 12" MIN. CUT BACK OVER UNDISTURBED SOIL.

Additional notes from diagram: HMA PAVEMENT, CL 1/2" PG 62-22, SEE TABLE 1, CRUSHED SURFACING (CSTC), MATCH EXISTING THICKNESS, 8" MIN.

CITY OF TACOMA

DEPARTMENT OF PUBLIC WORKS

APPROVED FOR PUBLICACION

[Signature] 7/17/17

CITY ENGINEER DATE

TYPICAL PAVEMENT RESTORATION FOR ASPHALT CONCRETE/OIL MAT PAVEMENT

STANDARD PLAN NO. SU-15B

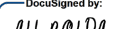
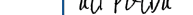
**CALL
2 BUSINESS DAYS
BEFORE YOU DIG**

811

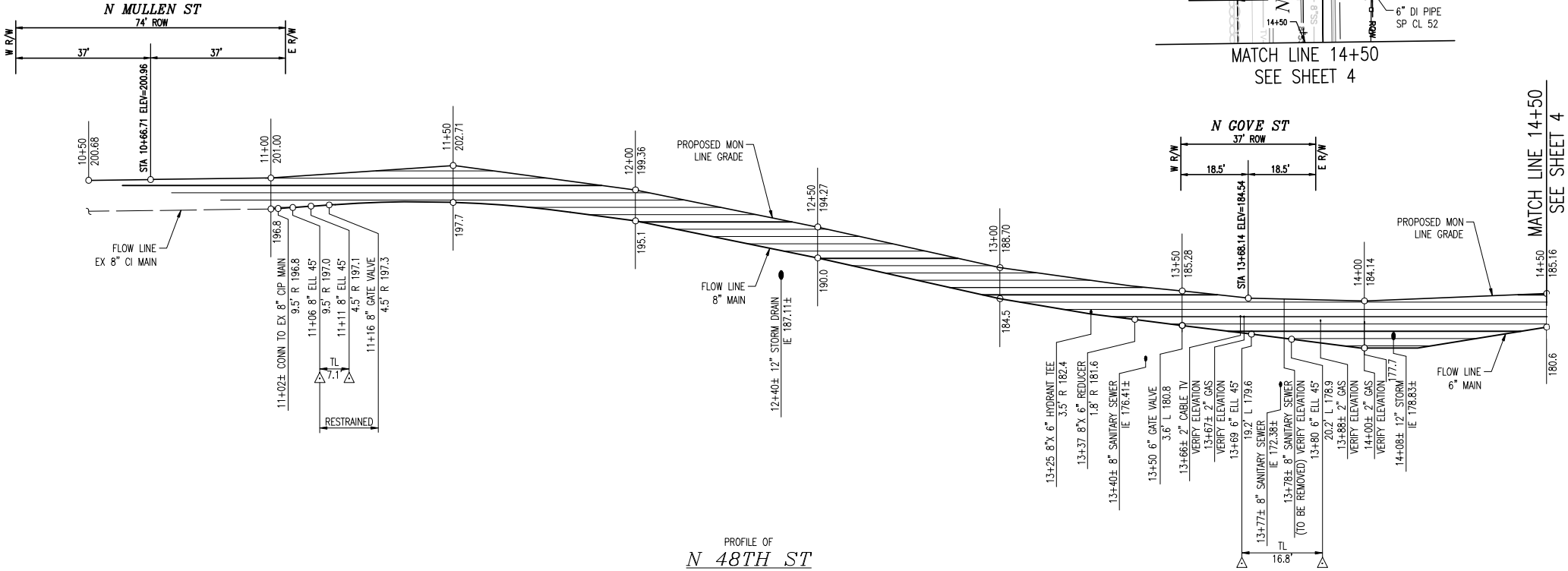
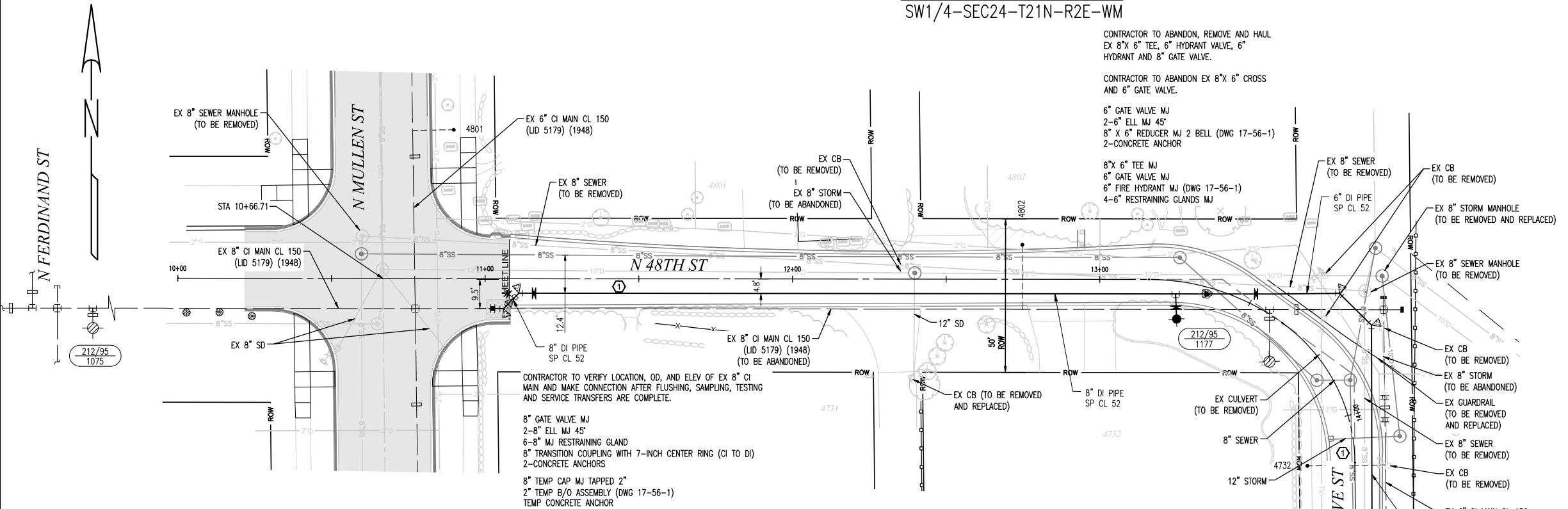
"It's the Law"

www.callbeforeyoudig.com



						MAIN REPLACEMENT PROJECT 2016-39 WATER MAINS AND FIRE HYDRANTS FOR STREETS INITIATIVE PACKAGE 35 LEGEND AND ABBREVIATIONS					
3						DATE DECEMBER 2019		APPROVED 		SCALE HORIZ: NTS VERT: NTS	
2						DESIGNED MDY		 PLANNING & ENGINEERING DIVISION		DRAWING NO.	
1						DRAWN MDY				2016-39	
NO	REVISION	DATE	BY	APP'D		CHECKED TAS					
REFERENCE											
FIELD BOOK	MAP NO. 212/95	BLUE BOOK 08	WBS # WTR-00478-27	SURVEYING 20000117403	ENGINEERING WTR-00478-27-01	INSPECTION 20000091300	SHEET 2 OF 9				

N 48TH ST
SW1/4-SEC24-T21N-R2E-WM



CONTRACTOR TO ABANDON, REMOVE AND HAUL
EX 8"x 6" TEE, 6" HYDRANT VALVE, 6"
HYDRANT AND 8" GATE VALVE.

CONTRACTOR TO ABANDON EX 8"x 6" CROSS
AND 6" GATE VALVE.

6" GATE VALVE MJ
2-6" ELL MJ 45°
8" X 6" REDUCER MJ 2 BELL (DWG 17-56-1)
2-CONCRETE ANCHOR

8"x 6" TEE MJ
6" GATE VALVE MJ
6" FIRE HYDRANT MJ (DWG 17-56-1)
4-6" RESTRAINING GLANDS MJ

CONTRACTOR TO VERIFY LOCATION, OD, AND ELEV OF EX 8" CI
MAIN AND MAKE CONNECTION AFTER FLUSHING, SAMPLING, TESTING
AND SERVICE TRANSFERS ARE COMPLETE.

8" GATE VALVE MJ
2-8" ELL MJ 45°
6-8" MJ RESTRAINING GLAND
8" TRANSITION COUPLING WITH 7-INCH CENTER RING (CI TO DI)
2-CONCRETE ANCHORS

8" TEMP CAP MJ TAPPED 2"
2" TEMP B/O ASSEMBLY (DWG 17-56-1)
TEMP CONCRETE ANCHOR

CONTRACTOR	
SUPPLIER	
PIPE	
HYDRANTS	
VALVES	
INSPECTOR	
PRE-CONSTRUCTION	
PERMIT NUMBER	
ACTIVATE PERMIT	
START	
FILL MAIN	
PRESSURE TEST	
FLUSHED	
SAMPLES LOGGED IN BOOK	
1ST SET OF SAMPLES	
2ND SET OF SAMPLES	
MAIN IN SERVICE	
PROJECT COMPLETION LETTER	
HYDRANT DATA SHEETS	
B/O DATA SHEETS	
FINAL CHECK	
CLOSE PERMIT	
YEARLY PROJECTS INSPECTORS OFFICE	
PHASES	
SECTION	START
	FILL
	TEST
	IN SERVICE

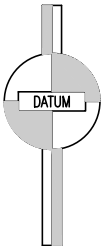
PAVEMENT RESTORATION NOTES
(FOR REFERENCE ONLY - SEE MASTER PLANS)

- ① 2" HMA CL 1/2" PG 58H-22 OVER 4" CSBC
② GRIND AND OVERLAY.

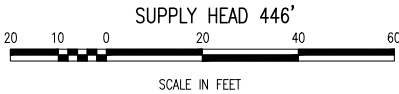
NOTE:
ABANDONED PIPE SHALL BE PLUGGED AT ENDS PER TACOMA
WATER INSPECTORS DISCRETION AND METHODOLOGY.

RESTRAINING GLANDS CAN BE USED AS AN ALTERNATIVE TO
CONCRETE ANCHORS WHEN IN CONFLICT WITH STRUCTURES OR
DUE TO SITE CONSTRAINTS.

HAIR PINS FOR 8"x6" REDUCER PROVIDED BY TACOMA WATER.

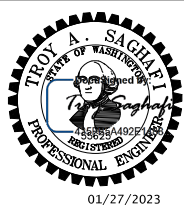


NGVD29



Addendum 1

FINAL PAVEMENT RESTORATION LIMITS TO BE DETERMINED BY
PUBLIC WORKS INSPECTION IN FIELD.



APPROVED AS TO ALIGNMENT AND GRADE by:
02/13/2023
DATE
CITY ENGINEER

3				
2				
1				
NO	REVISION	DATE	BY	APP'D
REFERENCE				
FIELD BOOK	MAP NO. 212/95	BLUE BOOK 08		

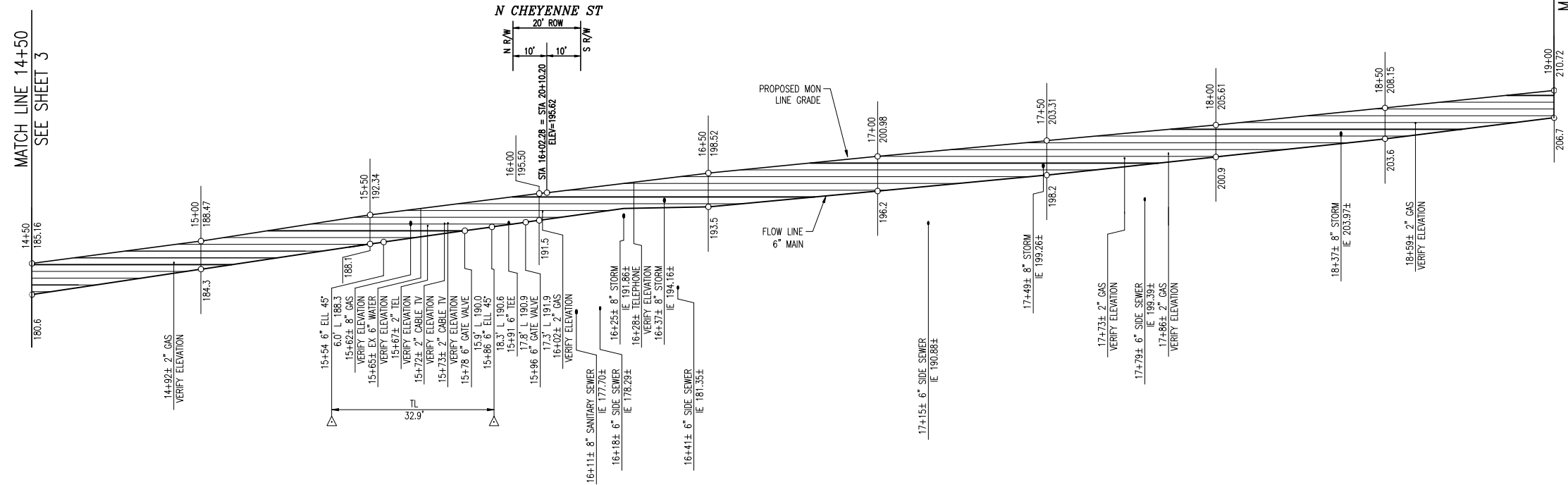
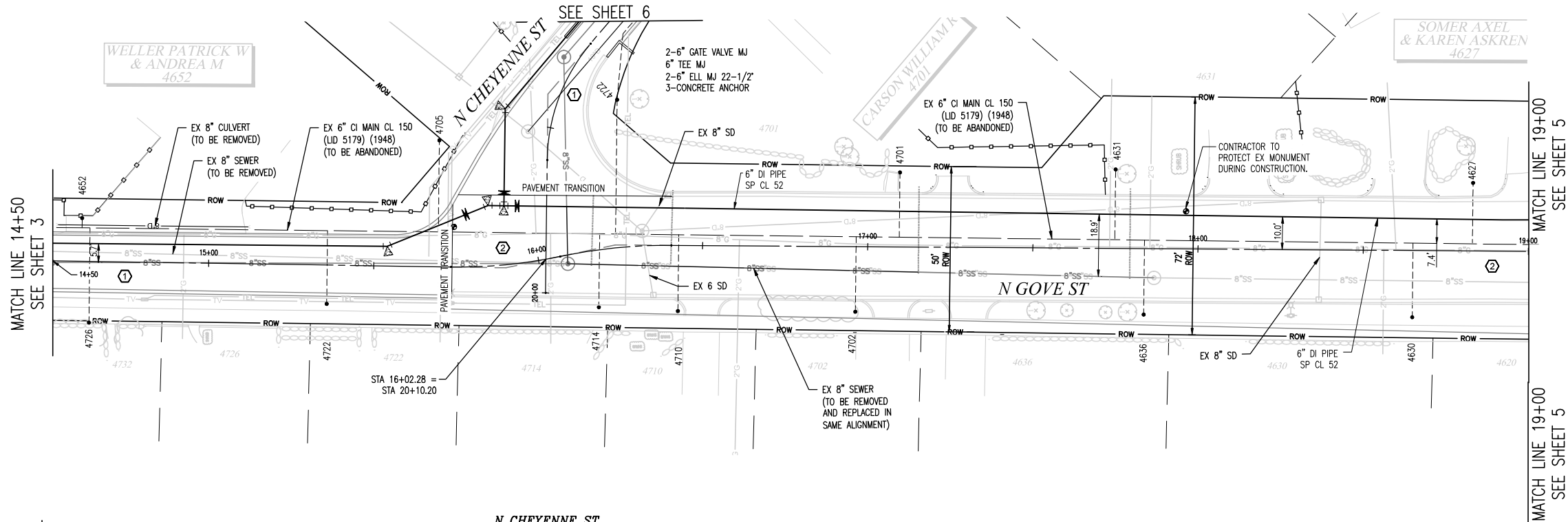
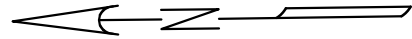
CITY OF TACOMA
DEPARTMENT OF PUBLIC UTILITIES
WATER DIVISION

MAIN REPLACEMENT PROJECT 2016-39
WATER MAINS AND FIRE HYDRANTS FOR
STREETS INITIATIVE PACKAGE 35
N 48TH ST STA 11+00 TO STA 14+50

DATE: DECEMBER 2019
DESIGNED: MDY
DRAWN: MDY
CHECKED: TAS
WBS #: WTR-00478-27
SURVEYING: 20000117403
ENGINEERING: WTR-00478-27-01
INSPECTION: 20000091300
SHEET: 3 OF 9

DocuSigned by:
APPROVED:
PLANNING & ENGINEERING DIVISION
SCALE: HORIZ: 1"=20', VERT: 1"=10'
DRAWING NO: 2016-39

N GOVE ST
SW1/4-SEC24-T21N-R2E-WM



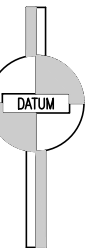
PAVEMENT RESTORATION NOTES
(FOR REFERENCE ONLY - SEE MASTER PLANS)

- 2" HMA CL 1/2" PG 58H-22 OVER 4" CSBC
- GRIND AND OVERLAY.

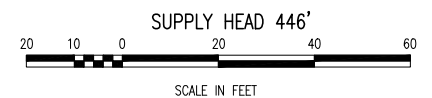
NOTE:

ABANDONED PIPE SHALL BE PLUGGED AT ENDS PER TACOMA WATER INSPECTORS DISCRETION AND METHODOLOGY.

RESTRAINING GLANDS AN BE USED AS AN ALTERNATIVE TO CONCRETE ANCHORS WHEN IN CONFLICT WITH STRUCTURES OR DUE TO SITE CONSTRAINTS.

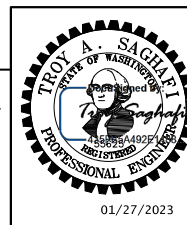


NGVD29



Addendum 1

FINAL PAVEMENT RESTORATION LIMITS TO BE DETERMINED BY PUBLIC WORKS INSPECTION IN FIELD.

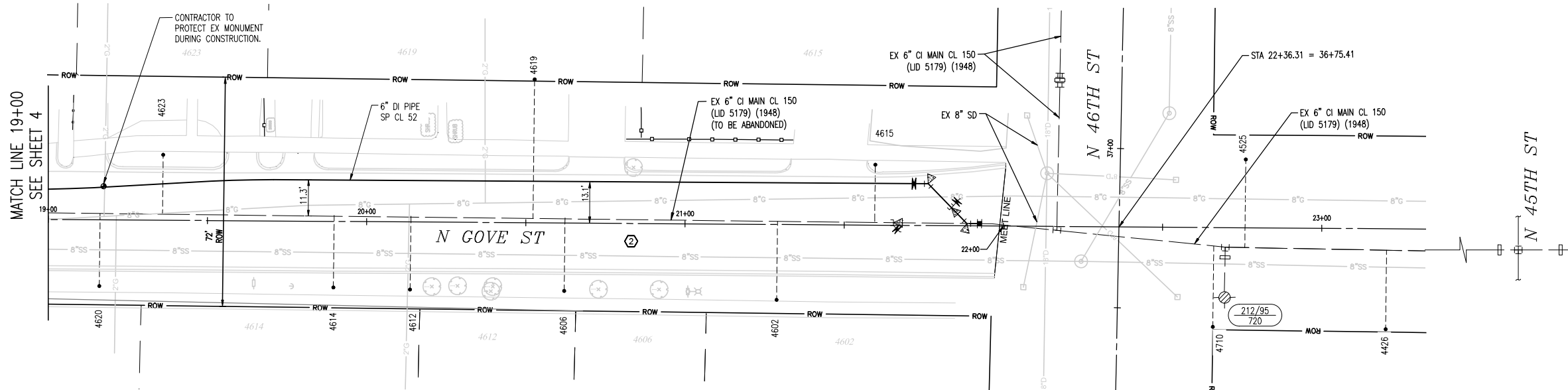
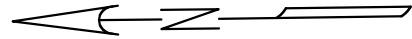


APPROVED AS TO ALIGNMENT AND GRADE Signed by: [Signature] DS
02/13/2023 66A2DE3E2E248F CITY ENGINEER

NO	REVISION	DATE	BY	APP'D
3				
2				
1				
REFERENCE				
FIELD BOOK				
MAP NO. 212/95				
BLUE BOOK 08				

	CITY OF TACOMA DEPARTMENT OF PUBLIC UTILITIES WATER DIVISION
MAIN REPLACEMENT PROJECT 2016-39 WATER MAINS AND FIRE HYDRANTS FOR STREETS INITIATIVE PACKAGE 35 N GOVE STA 14+50 TO STA 19+00	
DATE: DECEMBER 2019	APPROVED: [Signature] all POWA PLANNING & ENGINEERING DIVISION
DESIGNED: MDY DRAWN: MDY CHECKED: TAS	SCALE: HORIZ: 1"=20' VERT: 1"=10' DRAWING NO: 2016-39
WBS # WTR-00478-27 SURVEYING 20000117403	ENGINEERING WTR-00478-27-01 INSPECTION 20000091300 SHEET 4 OF 9

N GOVE ST
SW1/4-SEC24-T21N-R2E-WM



CONTRACTOR TO VERIFY LOCATION, OD, AND ELEV OF EX 6" CI MAIN AND MAKE CONNECTION AFTER FLUSHING, TESTING, SAMPLING AND SERVICE TRANSFERS ARE COMPLETE.

- 6" GATE VALVE MJ
- 2-6" ELL MJ 45°
- 6-6" MJ RESTRAINING GLAND
- 6" TRANSITION COUPLING WITH 7-INCH CENTER RING (CI TO DI)
- 2-CONCRETE ANCHORS
- 2-6" TEMP CAP MJ TAPPED 2"
- 2-2" TEMP B/O ASSEMBLY (DWG 17-26-1)
- 2-TEMP CONCRETE ANCHORS

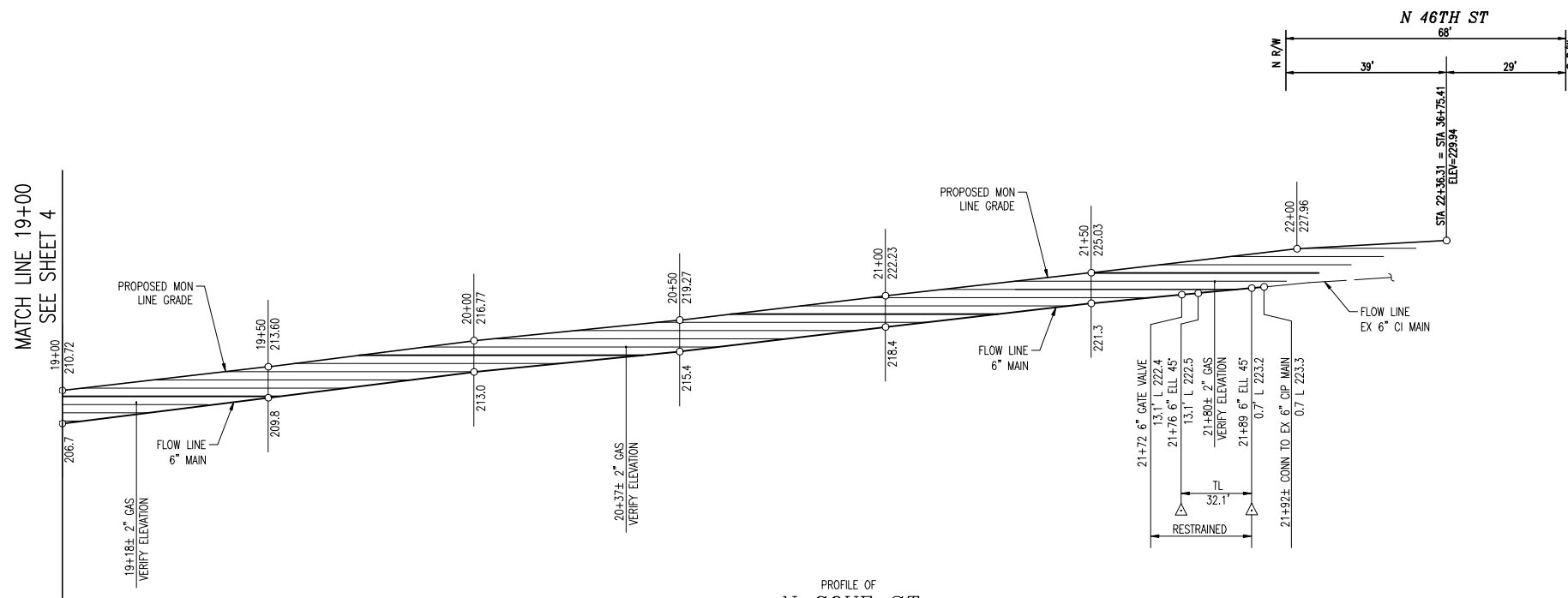
PAVEMENT RESTORATION NOTES
(FOR REFERENCE ONLY - SEE MASTER PLANS)

- ① 2" HMA CL 1/2" PG 58H-22 OVER 4" CSBC
- ② GRIND AND OVERLAY.

NOTE:

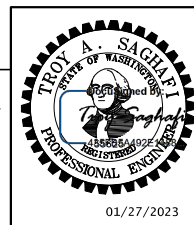
ABANDONED PIPE SHALL BE PLUGGED AT ENDS PER TACOMA WATER INSPECTORS DISCRETION AND METHODOLOGY.

RESTRAINING GLANDS CAN BE USED AS AN ALTERNATIVE TO CONCRETE ANCHORS WHEN IN CONFLICT WITH STRUCTURES OR DUE TO SITE RESTRAINTS.



PROFILE OF
N GOVE ST

FINAL PAVEMENT RESTORATION LIMITS TO BE DETERMINED BY PUBLIC WORKS INSPECTION IN FIELD.



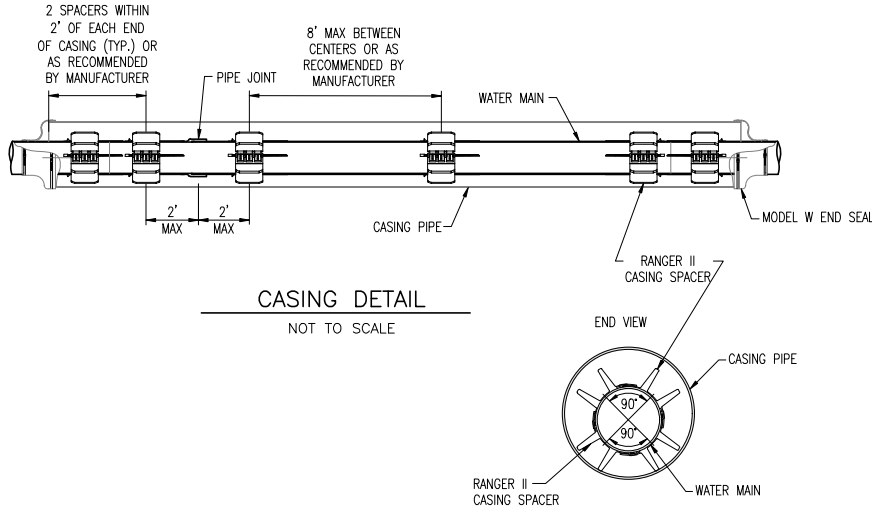
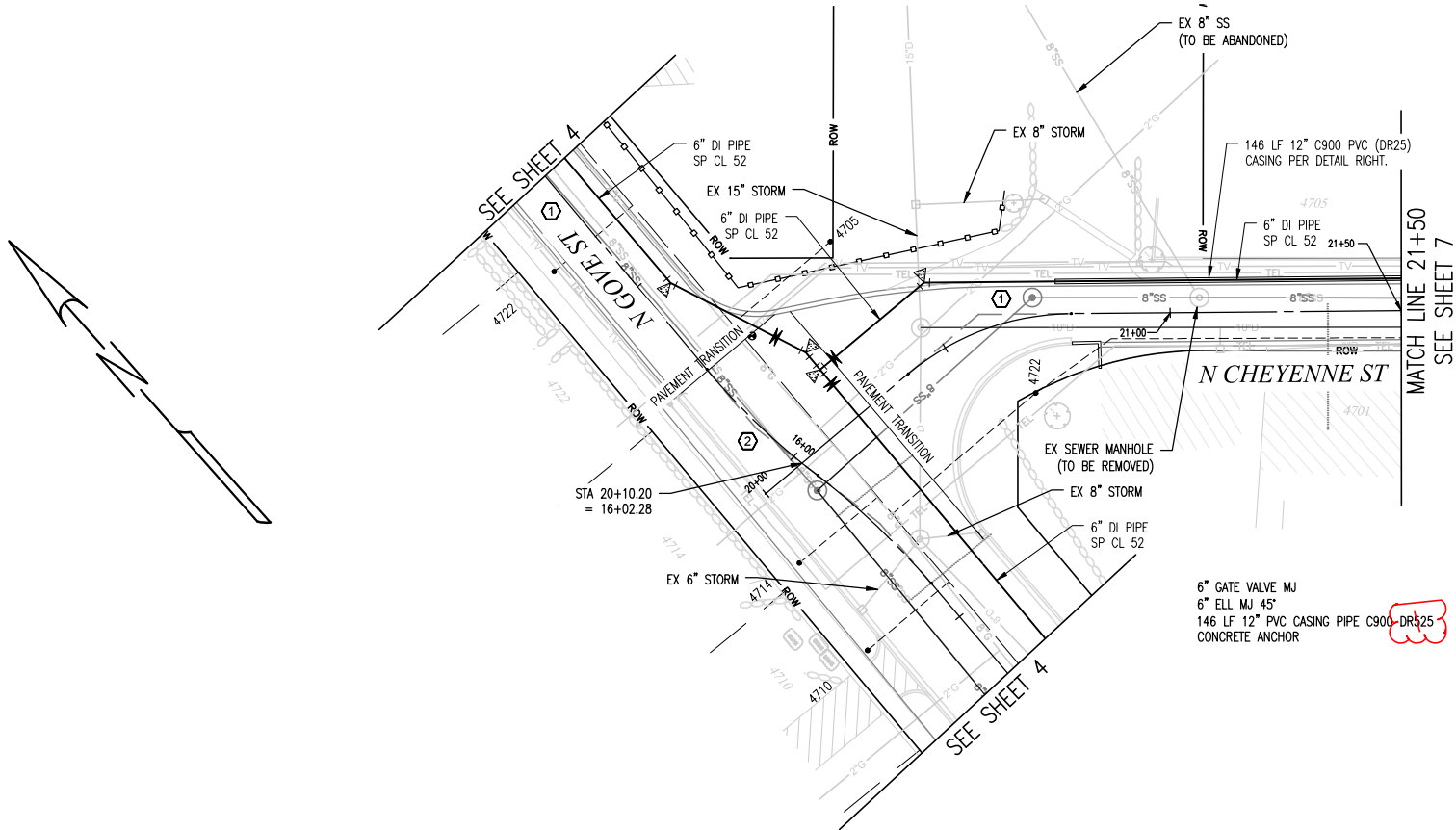
APPROVED AS TO ALIGNMENT AND GRADE
02/13/2023
DATE
CITY ENGINEER

	CITY OF TACOMA DEPARTMENT OF PUBLIC UTILITIES WATER DIVISION
MAIN REPLACEMENT PROJECT 2016-39 WATER MAINS AND FIRE HYDRANTS FOR STREETS INITIATIVE PACKAGE 35 N GOVE STA 19+00 TO STA 21+89	
DATE: DECEMBER 2019	APPROVED:
DESIGNED: MDY	DRAWN: MDY
CHECKED: TAS	DRAWING NO: 2016-39
WBS #	INSPECTION
WTR-00478-27	20000091300
SURVEYING	ENGINEERING
20000117403	WTR-00478-27-01
MAP NO. 212/95	BLUE BOOK 08
FIELD BOOK	SHEET 5 OF 9

Addendum 1

N CHEYENNE ST

SW1/4-SEC24-T21N-R2E-WM



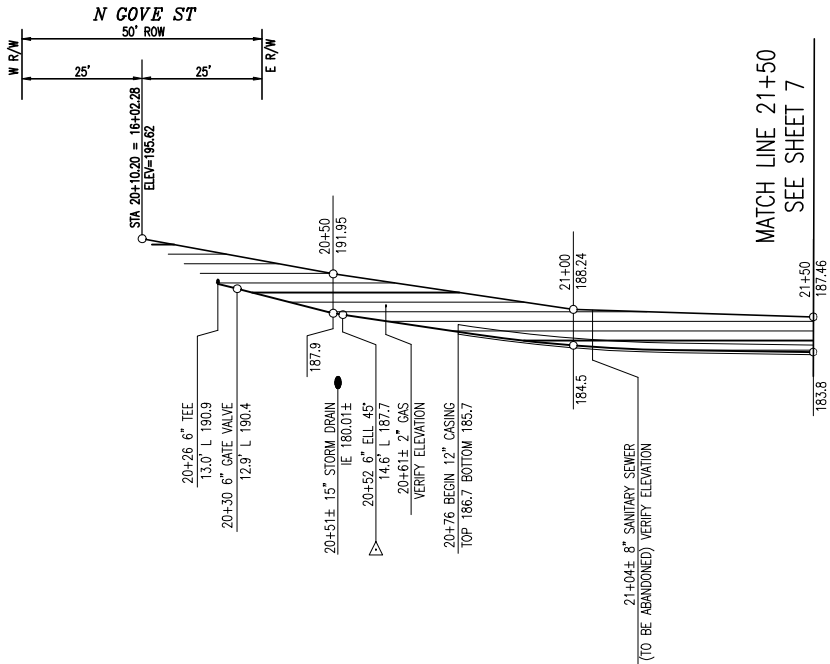
PAVEMENT RESTORATION NOTES
(FOR REFERENCE ONLY – SEE MASTER PLANS)

- 2" HMA CL 1/2" PG 58H-22 OVER 4" CSBC
- GRIND AND OVERLAY.

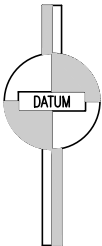
NOTE:

ABANDONED PIPE SHALL BE PLUGGED AT ENDS PER TACOMA WATER INSPECTORS DISCRETION AND METHODOLOGY.

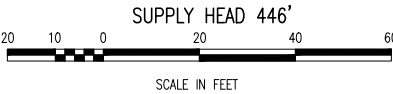
RESTRAINING GLANDS CAN BE USED AS AN ALTERNATIVE TO CONCRETE ANCHORS WHEN IN CONFLICT WITH STRUCTURES OR DUE TO SITE CONSTRAINTS.



PROFILE OF
N CHEYENNE ST



NGVD29



FINAL PAVEMENT RESTORATION LIMITS TO BE DETERMINED BY PUBLIC WORKS INSPECTION IN FIELD.

APPROVED AS TO ALIGNMENT AND GRADE by:

02/13/2023

DATE

DESIGNED BY: [Signature]

CITY ENGINEER

NO	REVISION	DATE	BY	APP'D
3				
2				
1				

REFERENCE

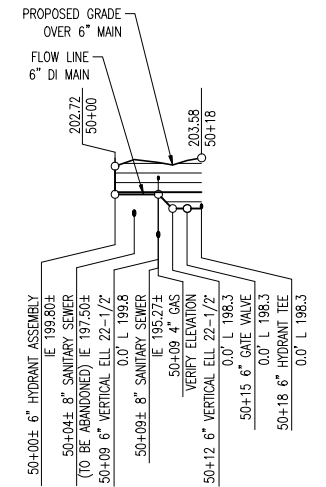
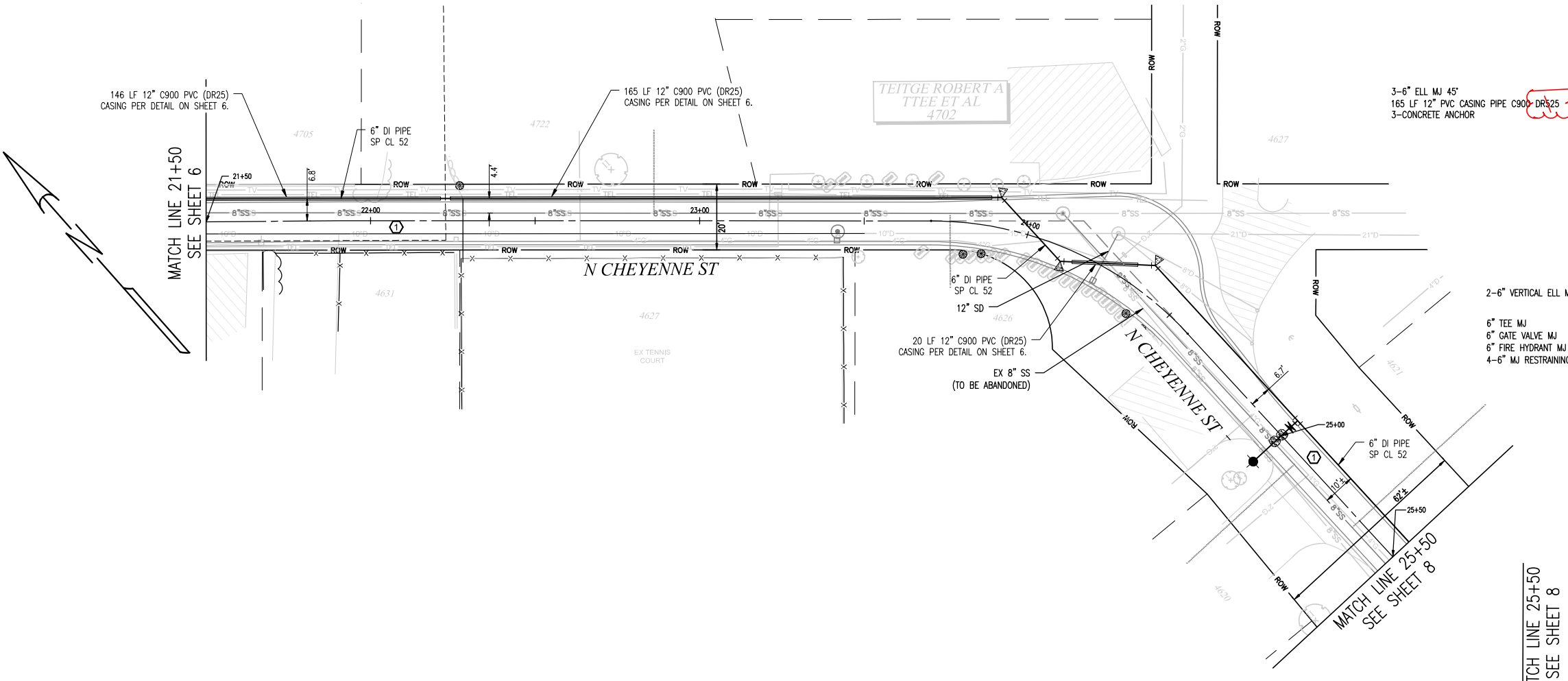
FIELD BOOK	MAP NO. 212/95	BLUE BOOK 08
------------	----------------	--------------

	CITY OF TACOMA DEPARTMENT OF PUBLIC UTILITIES
MAIN REPLACEMENT PROJECT 2016-39 WATER MAINS AND FIRE HYDRANTS FOR STREETS INITIATIVE PACKAGE 35 N CHEYENNE ST STA 23+68 TO STA 25+50	
DATE: DECEMBER/2019	APPROVED: [Signature]
DESIGNED: MDY	CHECKED: TAS
DRAWN: MDY	INSPECTION: 20000091300
WBS #	SHEET 6 OF 9

Addendum 1

N CHEYENNE ST

SW1/4-SEC24-T21N-R2E-WM

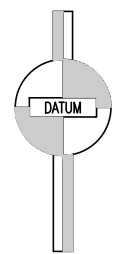


PROFILE OF
HYDRANT LATERAL
STA 25+00

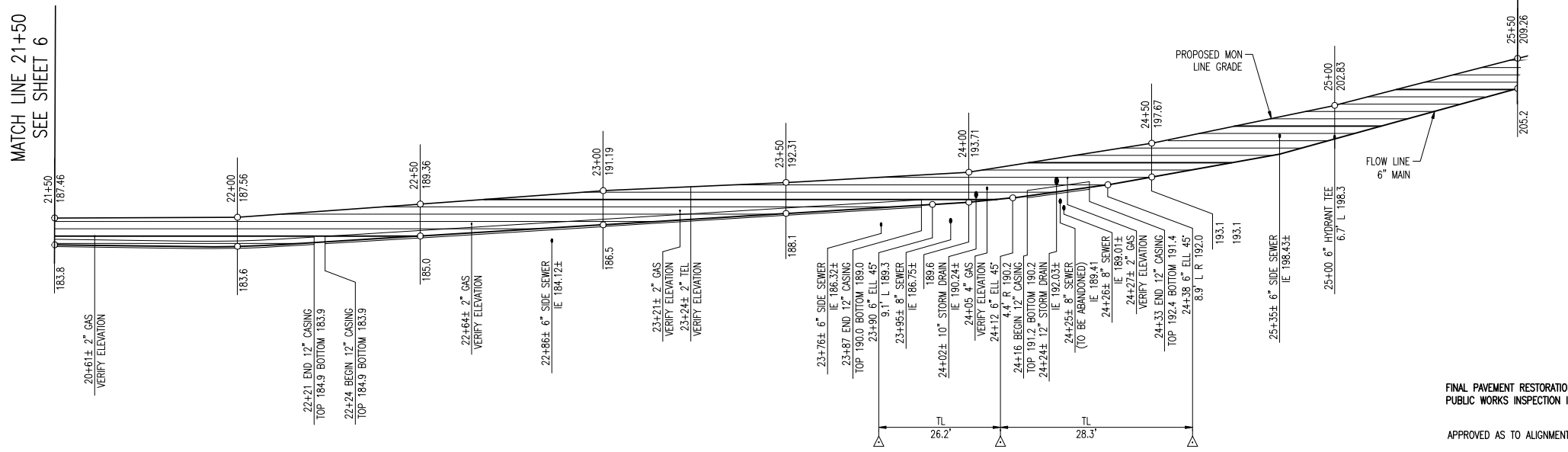
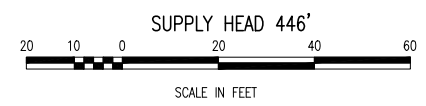
PAVEMENT RESTORATION NOTES
(FOR REFERENCE ONLY – SEE MASTER PLANS)

- ① 2" HMA CL 1/2" PG 58H-22 OVER 4" CSBC
- ② GRIND AND OVERLAY.

NOTE:
ABANDONED PIPE SHALL BE PLUGGED AT ENDS PER TACOMA WATER INSPECTORS DISCRETION AND METHODOLOGY.
RESTRAINING GLANDS CAN BE USED AS AN ALTERNATIVE TO CONCRETE ANCHORS WHEN IN CONFLICT WITH STRUCTURES OR DUE TO SITE CONSTRAINTS.



NGVD29

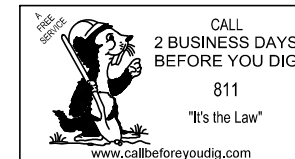
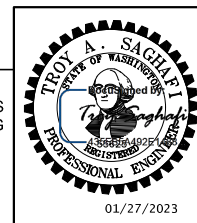


PROFILE OF
N CHEYENNE ST

FINAL PAVEMENT RESTORATION LIMITS TO BE DETERMINED BY PUBLIC WORKS INSPECTION IN FIELD.

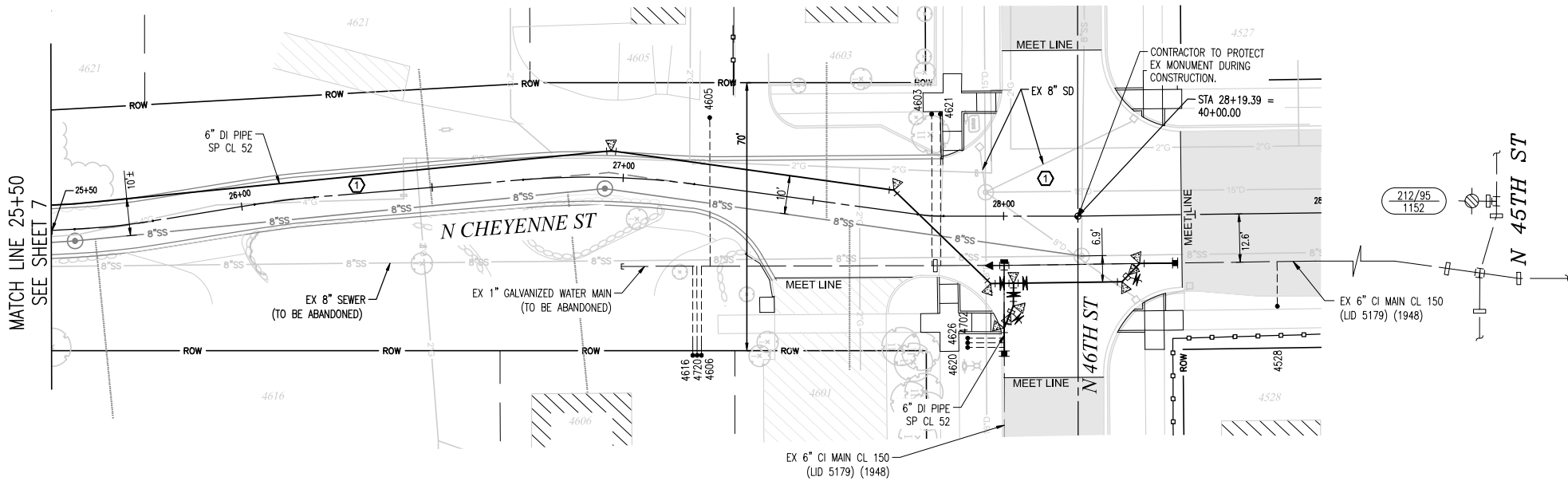
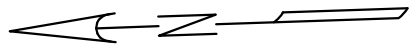
APPROVED AS TO ALIGNMENT AND GRADE by: [Signature]
02/13/2023
DATE
CITY ENGINEER

	CITY OF TACOMA DEPARTMENT OF PUBLIC UTILITIES
MAIN REPLACEMENT PROJECT 2016-39 WATER MAINS AND FIRE HYDRANTS FOR STREETS INITIATIVE PACKAGE 35 N CHEYENNE ST STA 21+50 TO STA 25+50	
DATE: DECEMBER/2019	APPROVED: [Signature]
DESIGNED: MDY	DRAWN: MDY
CHECKED: TAS	DRAWING NO: 2016-39
WBS #	INSPECTION
WTR-00478-27	20000091300



Addendum 1

N CHEYENNE ST
SW1/4-SEC24-T21N-R2E-WM



CONTRACTOR TO VERIFY LOCATION, OD, AND ELEV OF EX 6" CI MAIN AND MAKE CONNECTION AFTER FLUSHING, SAMPLING, TESTING AND SERVICE TRANSFERS ARE COMPLETE.

CONTRACTOR TO ABANDON, HAUL AND DISPOSE OF EX 6" CROSS, EX 6" PLUG AND EX 4" CAP.

- 3-6" GATE VALVE MJ
- 6" TEE MJ
- 6" ELL MJ 11-1/4"
- 2-ELL MJ 22-1/2"
- 4-6" ELL MJ 45"
- 12-6" MJ RESTRAINING GLAND
- 2-6" TRANSITION COUPLING W/7" CENTER RING (CI TO DI)
- 8-CONCRETE ANCHOR
- 2-6" TEMP CAP MJ TAPPED 2"
- 2-2" TEMP B/O ASSEMBLY (DWG 17-56-1)
- 2-TEMP CONCRETE ANCHOR

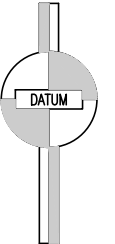
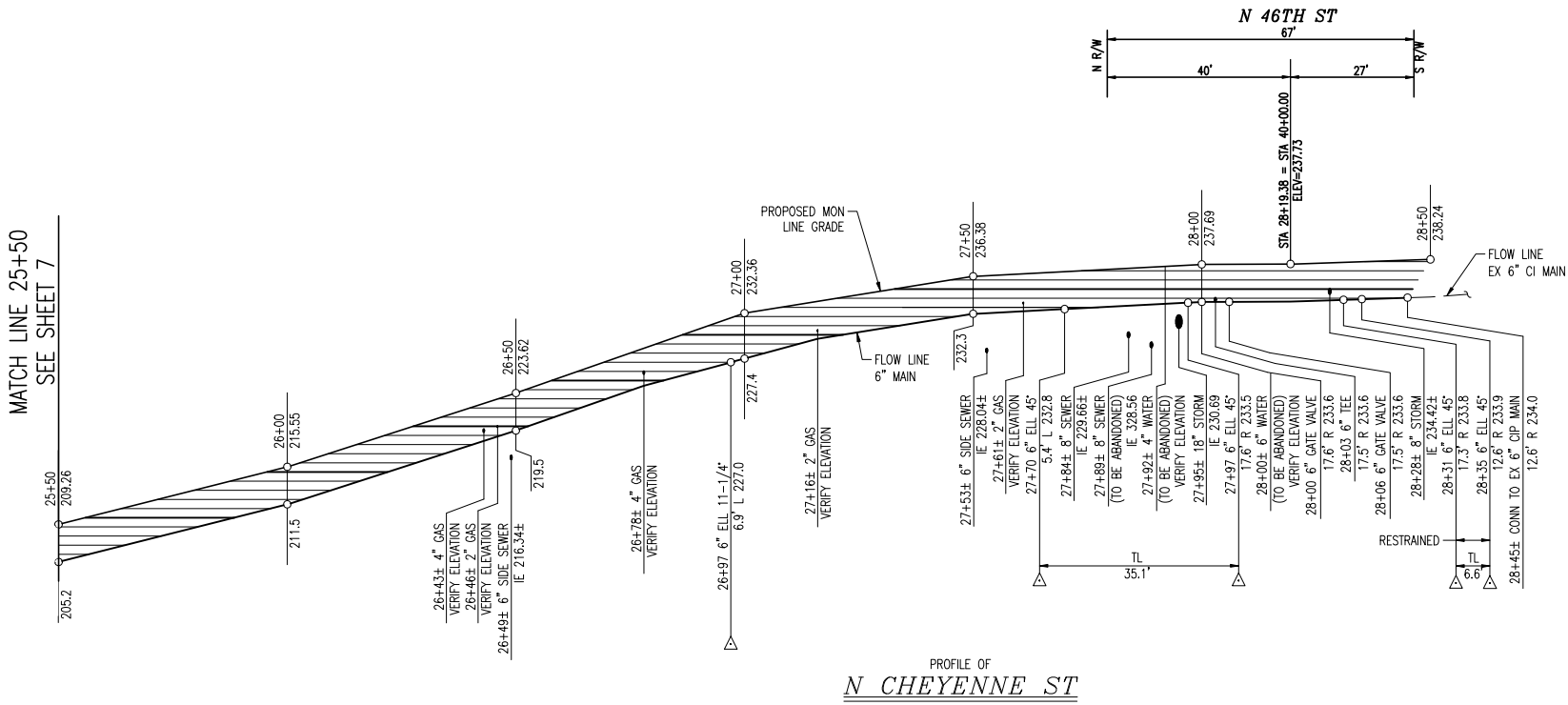
PAVEMENT RESTORATION NOTES
(FOR REFERENCE ONLY - SEE MASTER PLANS)

- ① 2" HMA CL 1/2" PG 58H-22 OVER 4" CSBC
- ② GRIND AND OVERLAY.

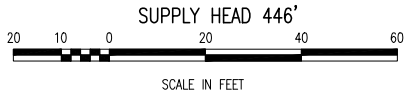
NOTE:

ABANDONED PIPE SHALL BE PLUGGED AT ENDS PER TACOMA WATER INSPECTORS DISCRETION AND METHODOLOGY.

RESTRAINING GLANDS CAN BE USED AS AN ALTERNATIVE TO CONCRETE ANCHORS WHEN IN CONFLICT WITH STRUCTURES OR DUE TO SITE CONSTRAINTS.

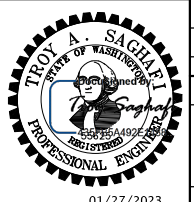


NGVD29



Addendum 1

FINAL PAVEMENT RESTORATION LIMITS TO BE DETERMINED BY PUBLIC WORKS INSPECTION IN FIELD.

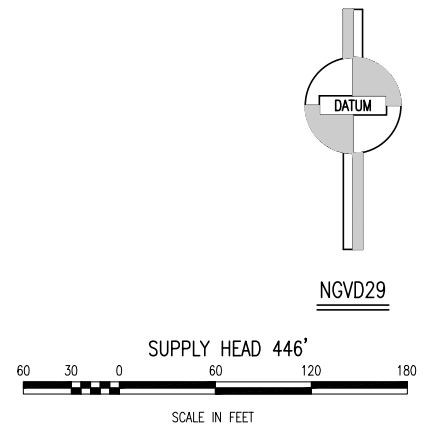


APPROVED AS TO ALIGNMENT AND GRADE Signed by: [Signature] DS
02/13/2023 66A20E3EB2E248F CITY ENGINEER

NO	REVISION	DATE	BY	APP'D
3				
2				
1				
REFERENCE				
FIELD BOOK	MAP NO. 212/95	BLUE BOOK 08		

	CITY OF TACOMA DEPARTMENT OF PUBLIC UTILITIES WATER DIVISION
MAIN REPLACEMENT PROJECT 2016-39 WATER MAINS AND FIRE HYDRANTS FOR STREETS INITIATIVE PACKAGE 35 N CHEYENNE ST STA 25+50 TO STA 28+45	
DATE: DECEMBER 2019	APPROVED: [Signature] PLANNING & ENGINEERING DIVISION
DESIGNED: MDY DRAWN: MDY CHECKED: TAS	SCALE: HORIZ: 1"=20' VERT: 1"=10' DRAWING NO: 2016-39
WBS # WTR-00478-27	SURVEYING 20000117403 ENGINEERING WTR-00478-27-01 INSPECTION 20000091300 SHEET 8 OF 9

SW1/4-SEC24-T21N-R2E-WM



DS
CW
CITY ENGINEER



CITY OF TACOMA
DEPARTMENT OF PUBLIC UTILITIES
WATER DIVISION

MAIN REPLACEMENT PROJECT 2016-39
WATER MAINS AND FIRE HYDRANTS FOR
STREETS INITIATIVE PACKAGE 35
SURVEY CONTROL PLAN

DESIGNED	MDY
----------	-----

DRAWN	MDY
-------	-----

CHECKED TAS

APPROVED

DocuSigned by:
au poluda
020CCD82555132

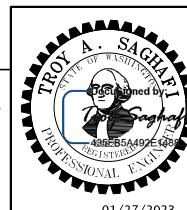
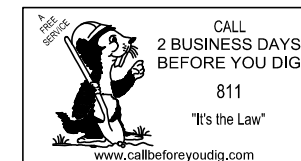
PLANNING & ENGINEERING DIVISION
ASSISTANT DIVISION MANAGER

SCALE
1"=60'
N/A

6-39

WBS #	SURVEYING	ENGINEERING	INSPECTION	SHEET <u>9</u> OF <u>9</u>
WTR-00478-27	200000117403	WTR-00478-27-01	200000091300	

FINAL PAVEMENT RESTORATION LIMITS TO BE DETERMINED BY
PUBLIC WORKS INSPECTION IN FIELD.



01/27/2023

3				
2				
1				
NO	REVISION	DATE	BY	APP'D
REFERENCE				
FIELD BOOK	MAP NO. 212/95		BLUE BOOK 08	