



TACOMA || TIDEFLATS
SUBAREA PLAN

Tideflats Advisory Group Meeting 7

October 14, 2021 | Zoom



Guiding Principles Survey Results

- 10 responses, not representative of the full TAG
- Prompt: “To what extent should the Plan and EIS alternatives emphasize this Guiding Principle?”

Scoring

Most = 2 points

More = 1 point

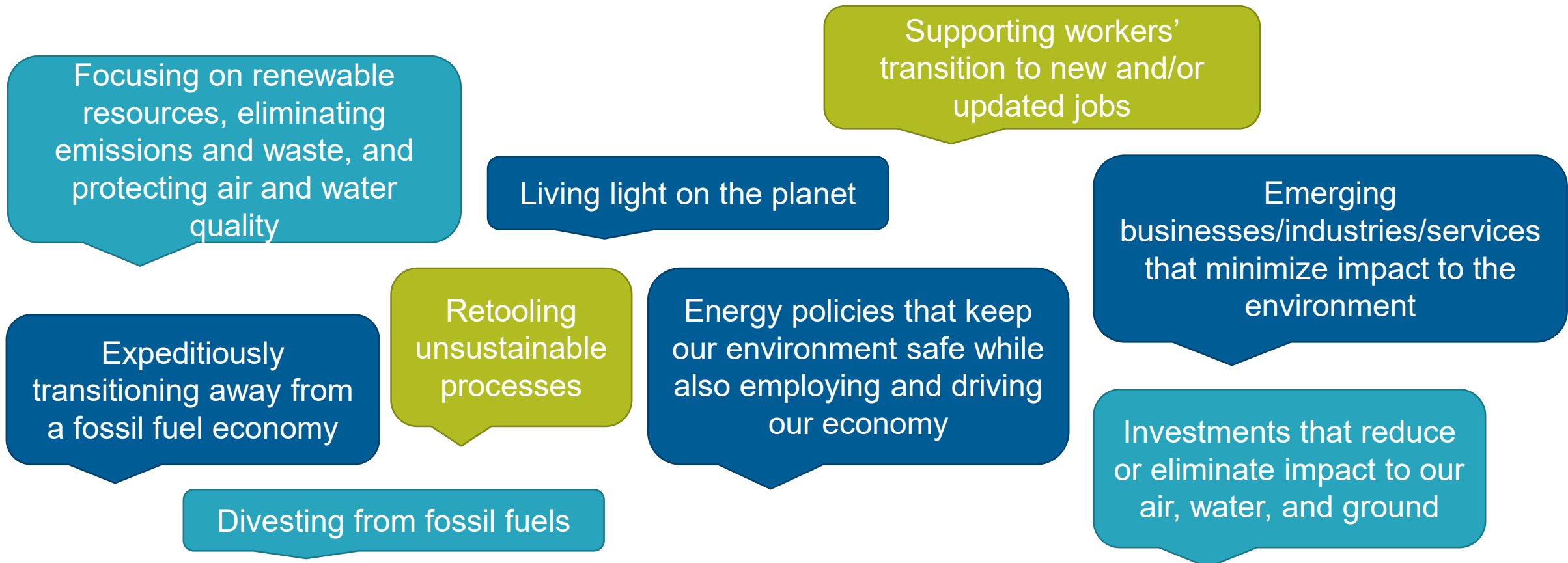
Neutral = 0 points

Guiding Principle	Most	More	Neutra l	Score
Port of Tacoma MIC is a center of global trade (11)	7	2	1	16
Effective buffers (14)	6	4	0	16
Investment in infrastructure (9)	6	3	1	15
Industrial lands are preserved and valued (10)	6	2	2	14
Subarea is more climate resilient (8)	4	4	2	12
Expanded family-wage jobs and career pathways (13)	4	4	2	12
Safe and healthy work environment (3)	3	6	1	12
Ongoing collaboration and dialogue (16)	2	8	0	12
Reservation and tribal lands are protected (6)	5	1	4	11
Leader in the green economy promoting industries (12)	3	4	3	10
Coordinated problem solving (15)	2	6	2	10
Elevating the subarea as a site of cultural practices (7)	4	1	5	9
Healthy communities and ecosystems (2)	3	3	4	9
Inclusive and equitable growth strategy (4)	3	3	4	9
Salmon and shellfish are thriving (1)	4	0	6	8
Cultural, educational, scientific, recreational activities (5)	2	3	5	7

What is missing?

- **Public health and safety** of employees and nearby communities
- **Recognition of role of Port** in essential activities and region's economic success
- **Consideration for adding housing** within the Tideflats
- **Support existing activities** that can only exist in the MIC
- **Support for treaty rights**

How would you define “green” or “clean” industry in the Tideflats subarea?



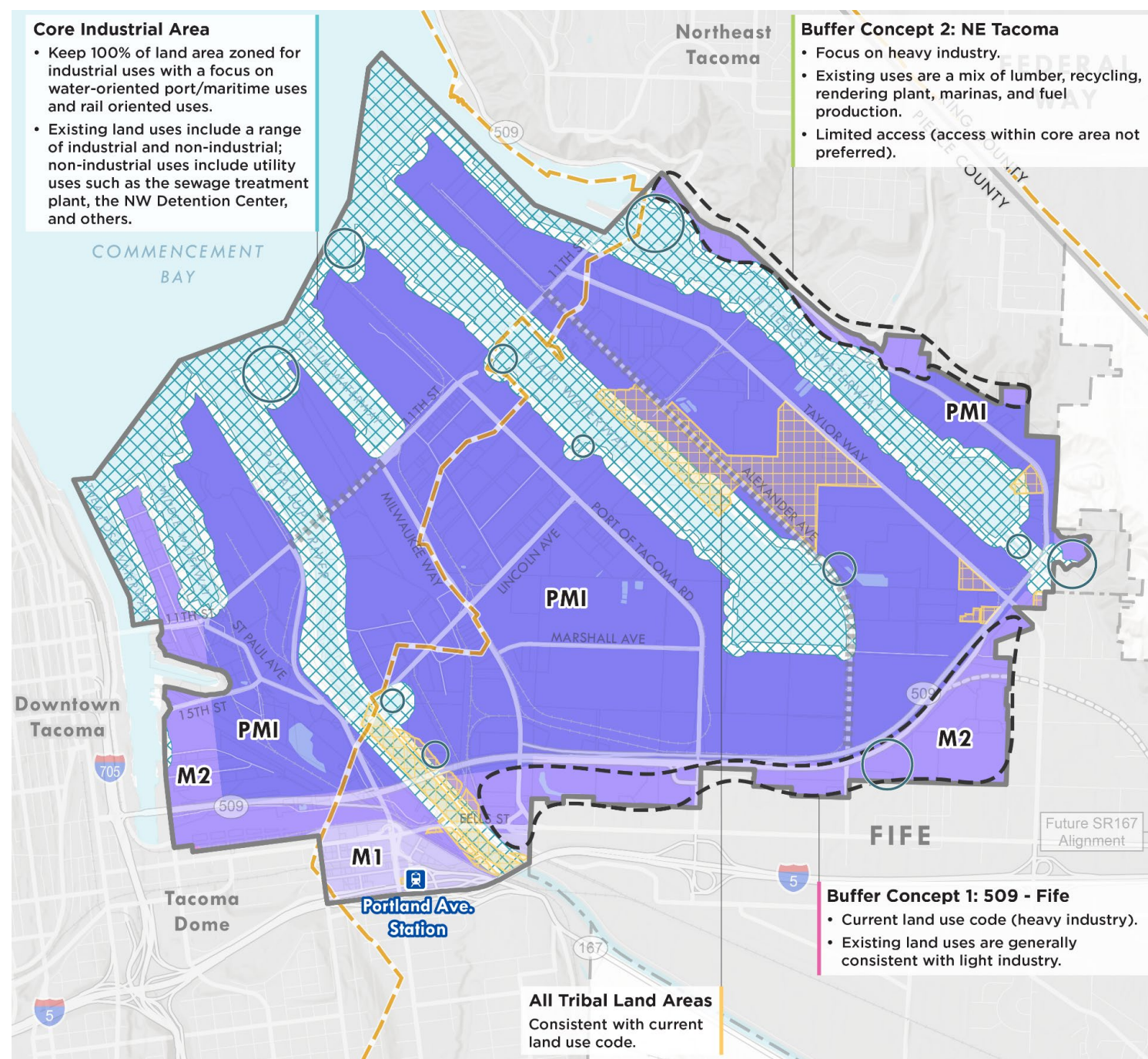
Do you prefer one term over another?

- If this plan embraces the principle of global leadership there are benefits to using “**clean,**” as outlined in the United Nations Clean Port Program
- **Prefer clean.**
- Clean is a term more related to health concerns while green is related to environmental concerns. I would prefer to **focus more on clean.**
- **Prefer clean.** "Green" has become a loaded term
- **Probably clean.** Green makes you think of plants but not all low carbon industry has a connection to plants. Green can also mean good for the environment but that's iffy as well as building more and more houses is not really good for the environment even when they're net zero. So **clean** or **low carbon** may work best, green is more warm and fuzzy - possibly markets better because it's not so specific.
- Prefer "**sustainable**" as it relates to all aspects of efficient use of resources as well as impact on the greater environment.

Alternative Concepts

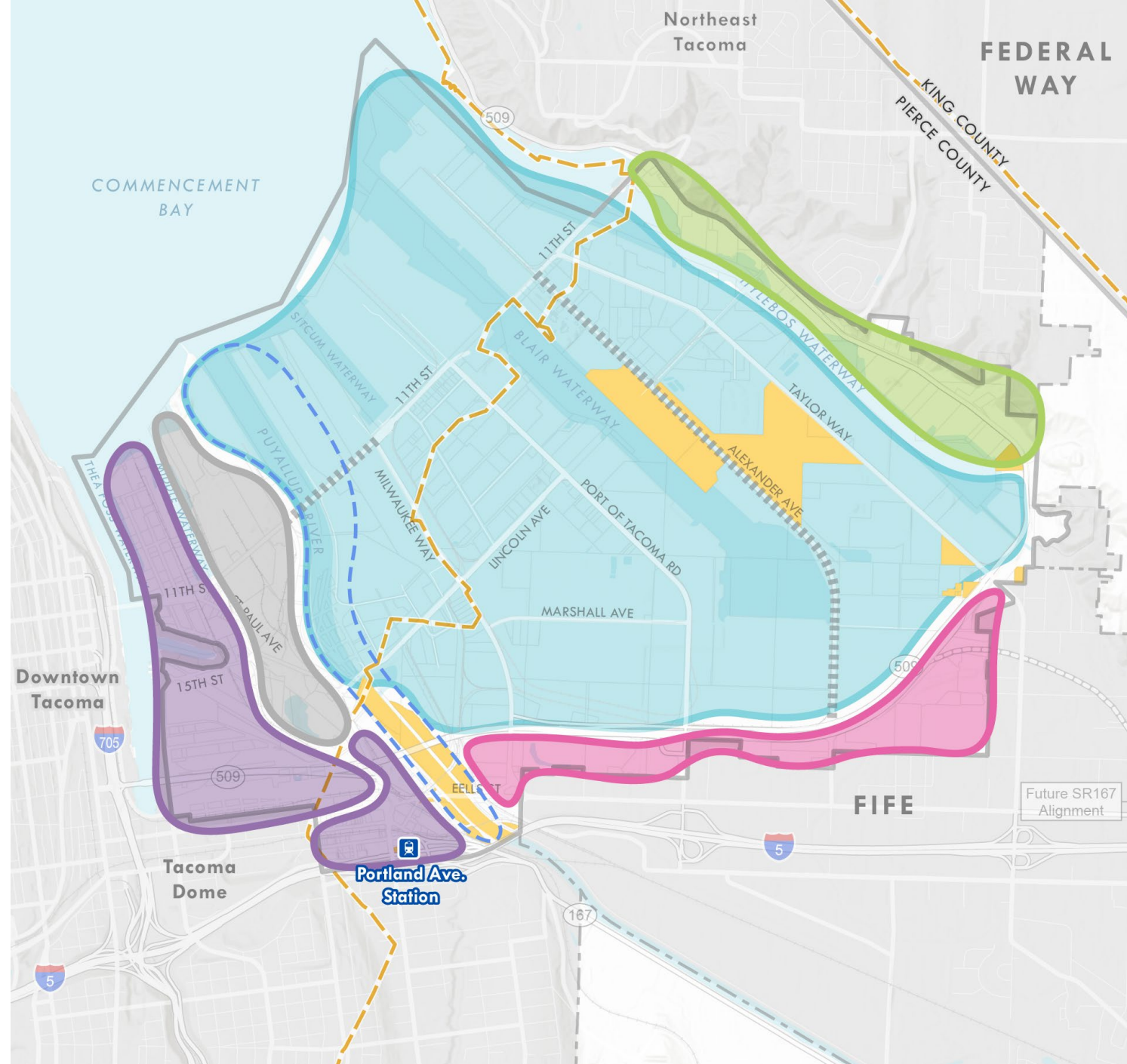
EXISTING ZONING

- The purpose of Alternatives in the EIS is to **present options** to decision-makers and the public in a meaningful way.
- “No action” alternative is required and defines what would happen if the proposal does not occur and provides a **benchmark for comparison with action alternatives.**



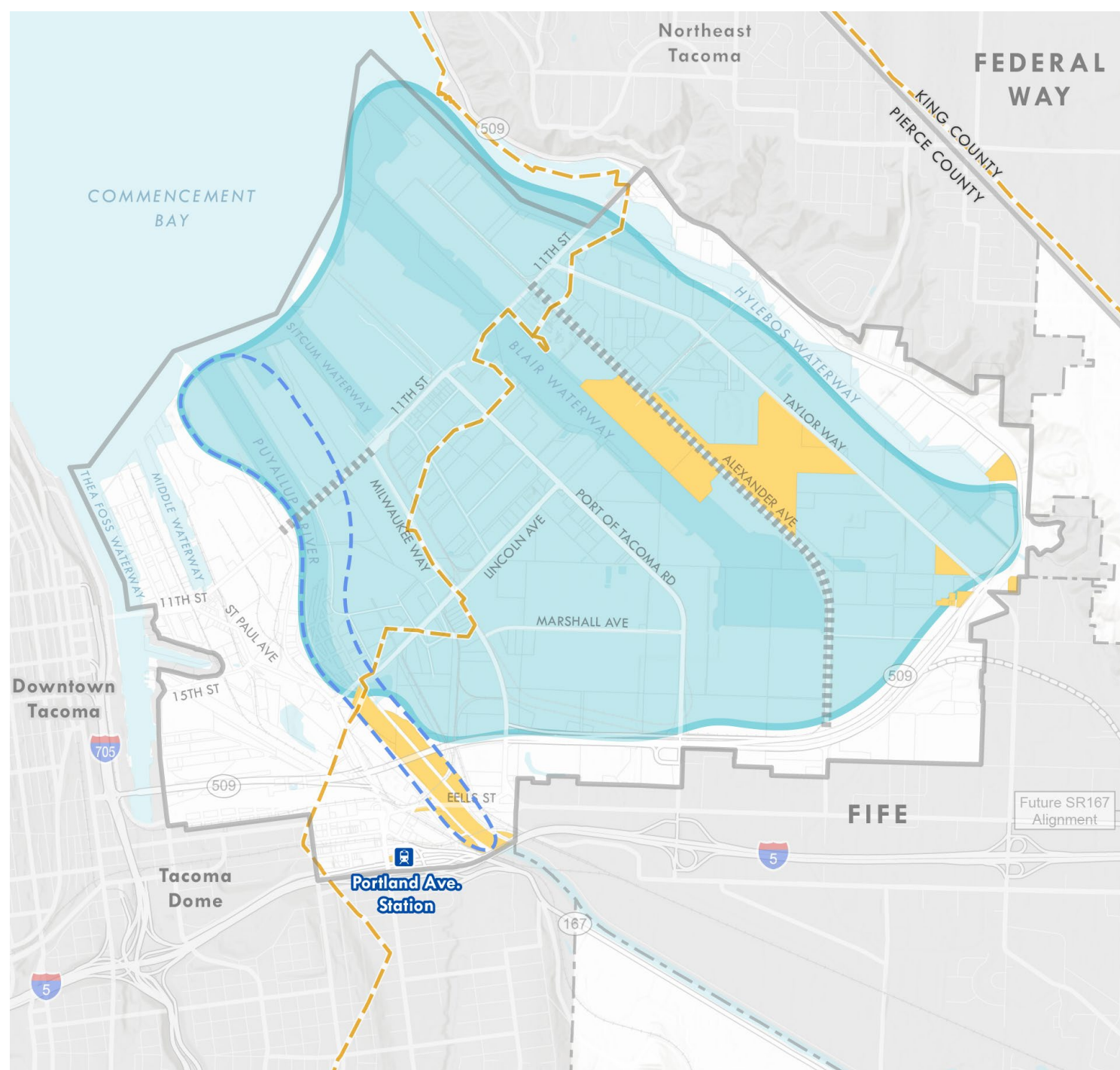
Alternative Concepts

- Alternatives should be **distinct and different** enough to allow for meaningful comparison.
- Alternatives should **represent a range of reasonable options**; it is not necessary to consider every possible option



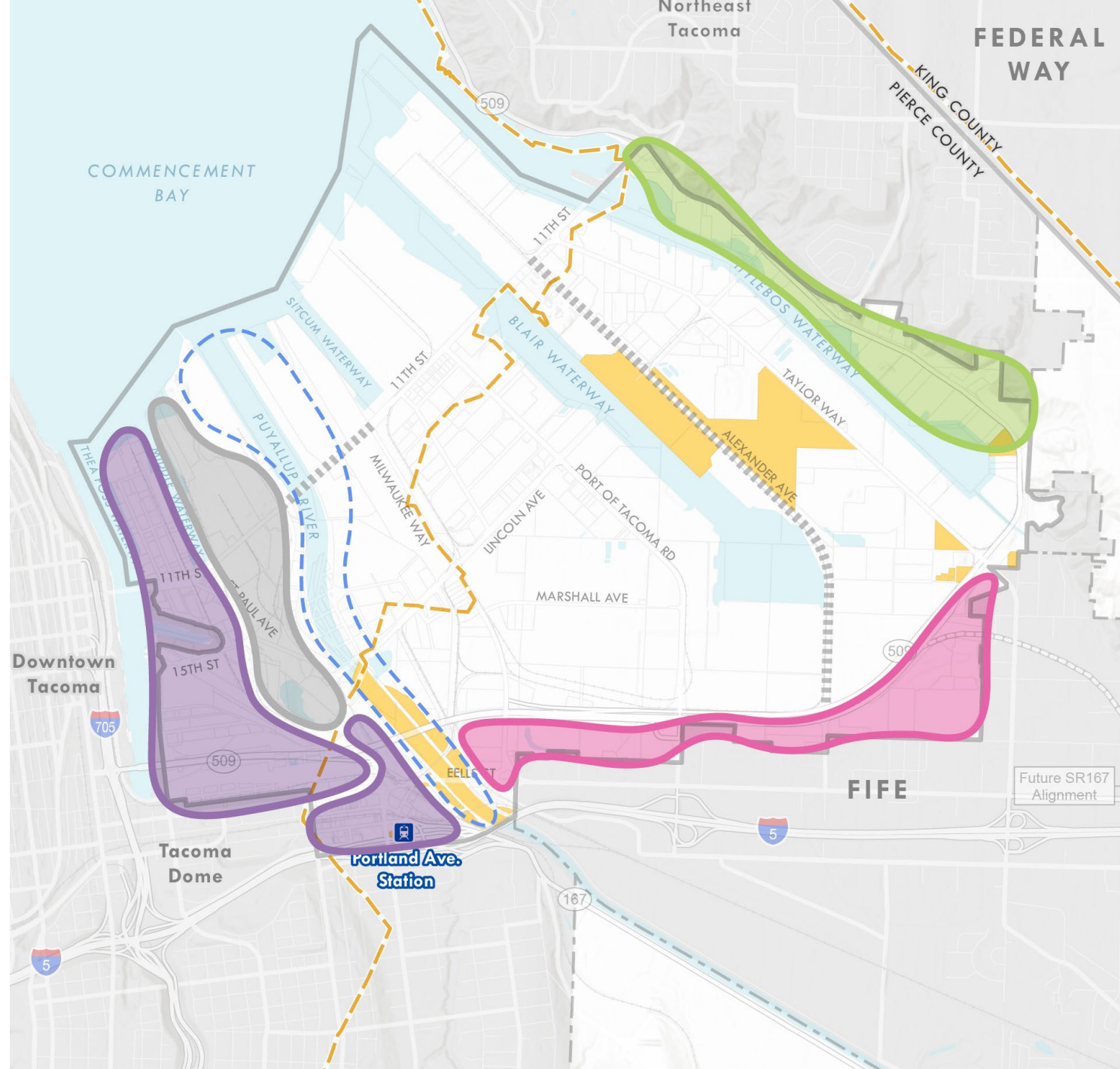
Alternative Concepts

- For this area, what big picture land use concepts should be included in the Alternatives?
- What are the highest priorities? What activities can only exist in the MIC?
- The need for a **balance between restoration and cleanup of natural areas and preserving and strengthening jobs** was a significant community priority coming out of the Visioning process. What concepts would help us test that balance?



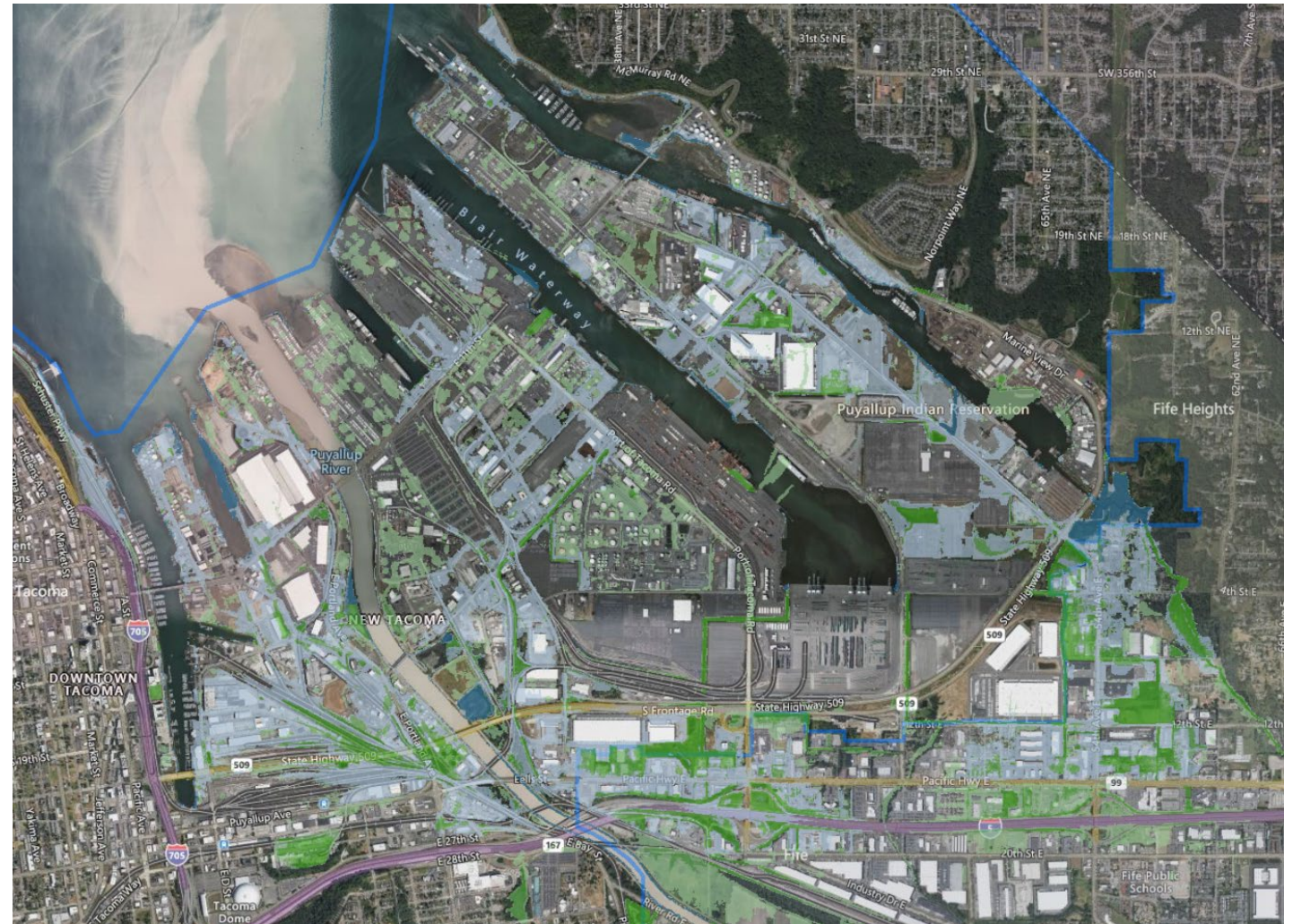
Alternative Concepts

- What makes an **effective transition**?
- Where should buffering and transitioning occur?
- What are the conflicts and impacts you are concerned about?
- What are appropriate uses or standards to make an effective buffer?



Alternative Concepts CLIMATE CHANGE

- Alternatives will consider different approaches to respond to climate change
- Map represents a +5' SLR scenario, Year 2100, and a 1% probability of exceedance



Alternative Concepts

OTHER ELEMENTS

- Restoration and clean up priorities
- Transportation investments
- Employment Growth

