

TACOMA TIDEFLATS

SUBAREA PLAN

Tideflats Advisory Group Meeting 5

April 15, 2021 | 4 – 5:30 pm | Zoom

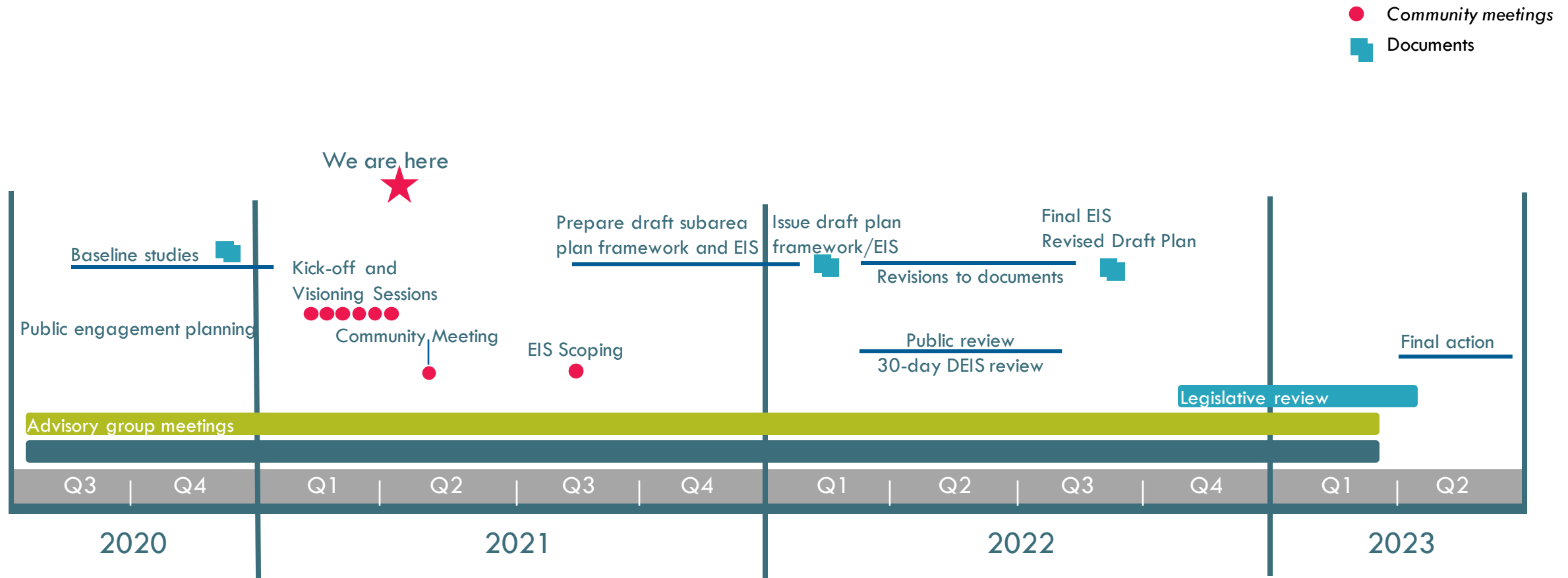


Agenda

1. Project Status Update
2. Visioning Report Out & Observations/Discussion
3. Alternatives Framework Overview & Discussion
4. Next Steps

1. Project Status Update

Project Status and Schedule



2. Visioning Report Out

Engagement by the Numbers

Engagement Type	Participants
1 Community Kickoff	56
8 Meetings in a Box	202
3 Panels	87
2 Focus Groups	27
StoryMap & Online Survey	300 to date
TOTAL	672

What We've Heard: Strengths

"Like the interconnectivity between natural wildlife and human development and infrastructure."

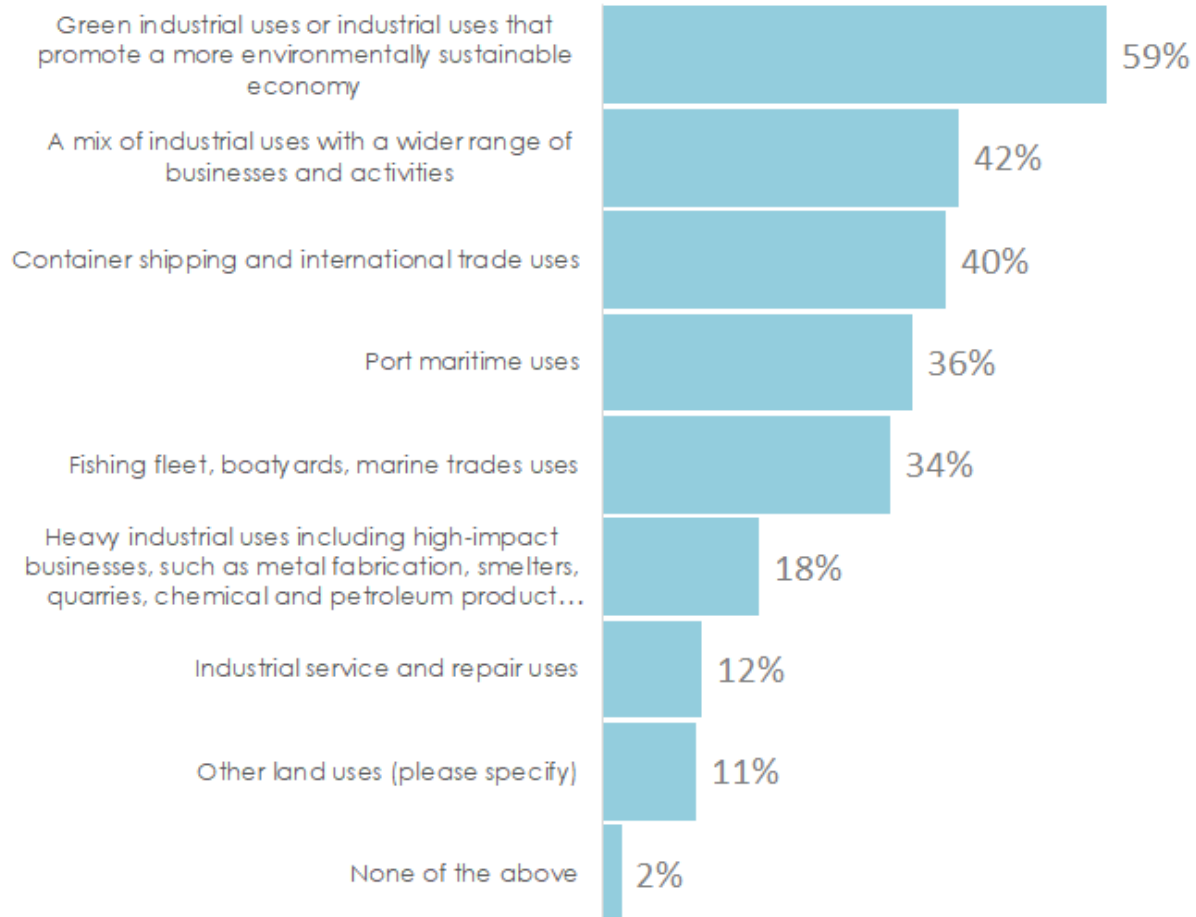
"Variety of industry in the port that has a robustness to it that can ride through different economic cycles."

"The Port is a huge concentration for people in the region who don't have university degrees—a great equalizer in many ways and supports low income and BIPOC populations with jobs."

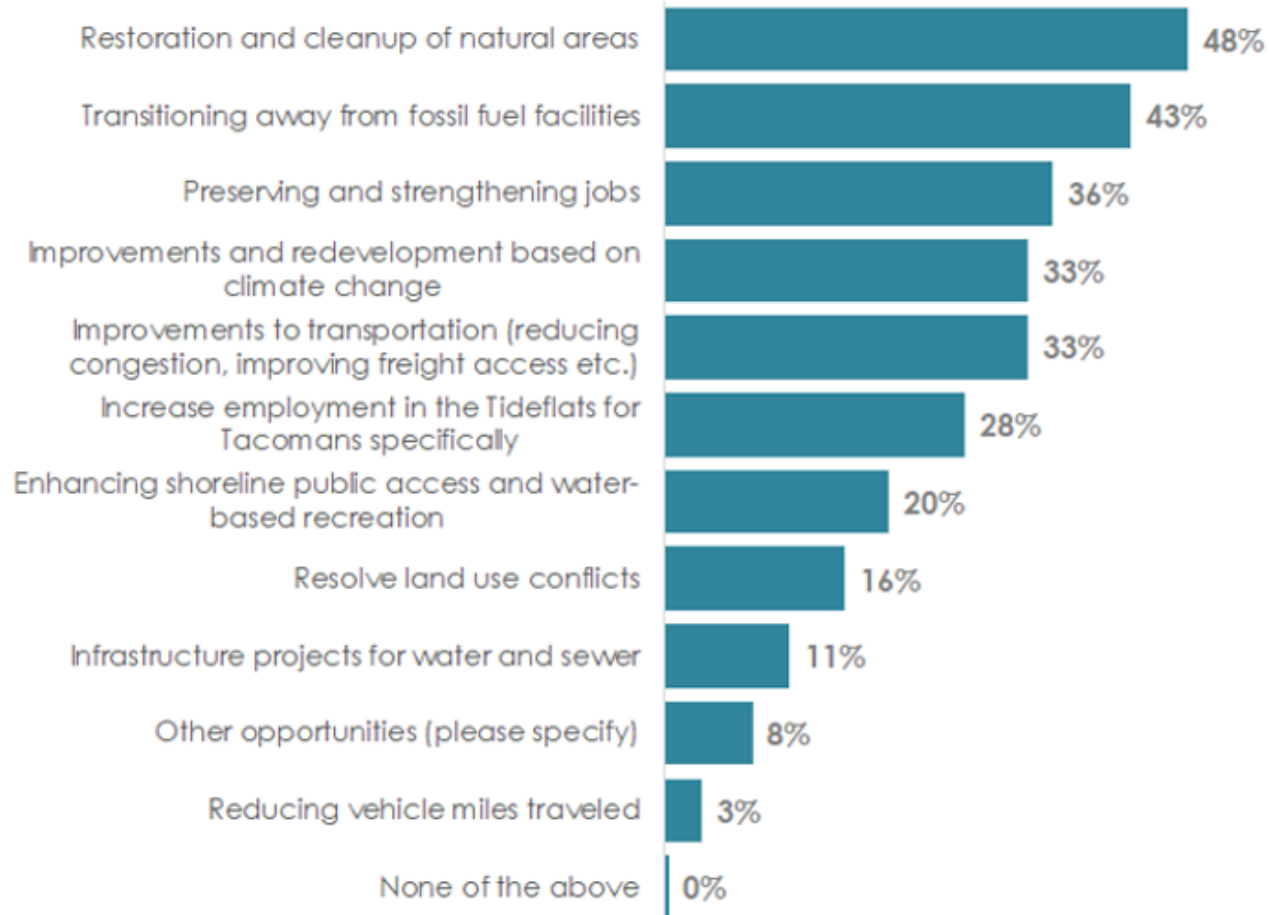
"Diversity of business vs. nature, interactions historic vs. modern, maritime vs. non-maritime. One of my favorite conglomerations of all that in one space."

*"Feel honored to be in area with the strength and tenacity of the Tribe."
"75% of tribal members live on or near reservation, it is their homeland forever, continuing to improve environmental baseline is essential."*

What We've Heard: Uses

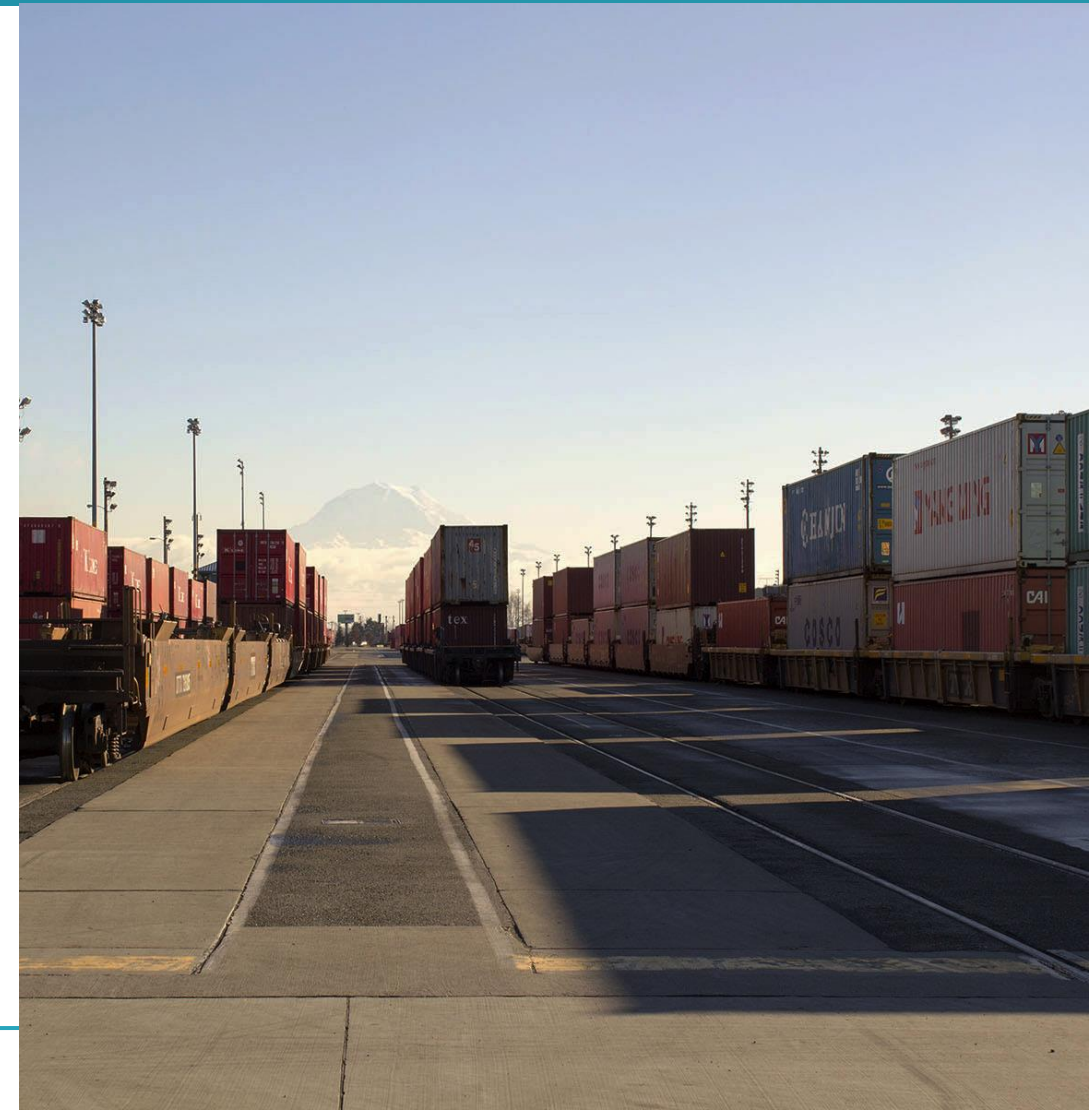


What We've Heard: Opportunities



What We've Heard: Vision

- Environmentally **sustainable world-class port**
- Diverse **employment center**
- Home to **recovering marine resources**
- **Collaboration** across interests
- **Modern infrastructure** and transit
- **Attractive city** in which to live and work
- **Cultural representation** of Tribe



Meeting in a Box Experiences

Did you host a **meeting in a box**?

Who did you meet with?

What did you learn?



Did anything **surprise you** about the community's feedback?



3. Alternatives Framework

EIS Overview

- Environmental review is required
- Environmental impact statement will be prepared
 - Documentation of proposal and alternatives, impacts and mitigating measures
 - Informational only
- Improves proposals from an environmental perspective [WAC 197-11-400(4)]



Non-Project EIS

Applicable Actions

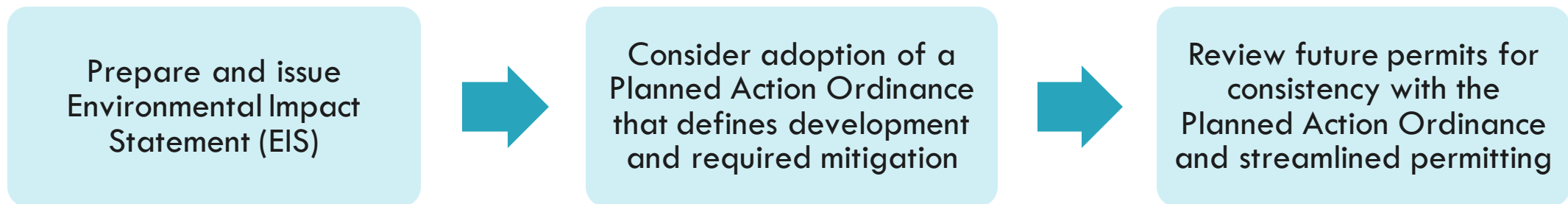
- Legislation, ordinances, rules, and regulations that contain standards controlling use of environment
- Land use plans and zoning laws
- Policy, plan, or program that governs development of series of connected actions

Features and Considerations

- Big picture analysis
- Emphasis on cumulative impacts
- May streamline future SEPA review of project actions (planned action)
- Format and content is more flexible than project-level EISs
- Helps inform public discussion of major policy options

Planned Action EIS

- Shifts environmental review of a project from the time of permit application to an earlier phase in the planning process
- Environmental impacts considered in area-wide EIS
- Applicable projects within planned action area do not require further environmental review



Planned Action Process

Proposal and Alternatives

- Think of alternatives as different ways to meet objectives
- Proposal and alternative courses of action, including no action
- Reasonable alternatives—actions that could feasibly attain or approximate proposal objectives at a lower environmental cost
- Distinct and different, capture full range of options
- Preferred alternative not required



Big Picture Concepts

ECONOMIC DEVELOPMENT

Support for small business, anti-displacement
Investment in infrastructure for industrial growth

ENVIRONMENT AND HEALTH

Investment in green infrastructure
Habitat and restoration areas

LAND USE

Focused or mix of uses, types of uses
Transitions, buffers between uses

TRANSPORTATION

Investment in specific types of transportation
(transit, freight, non-motorized)
Specific types of transportation improvements

Examples

Seattle Maritime Strategy Concepts

MARITIME + MANUFACTURING + LOGISTICS

Strengthen established economic clusters
and expand equitable access to jobs

INDUSTRY + INNOVATION

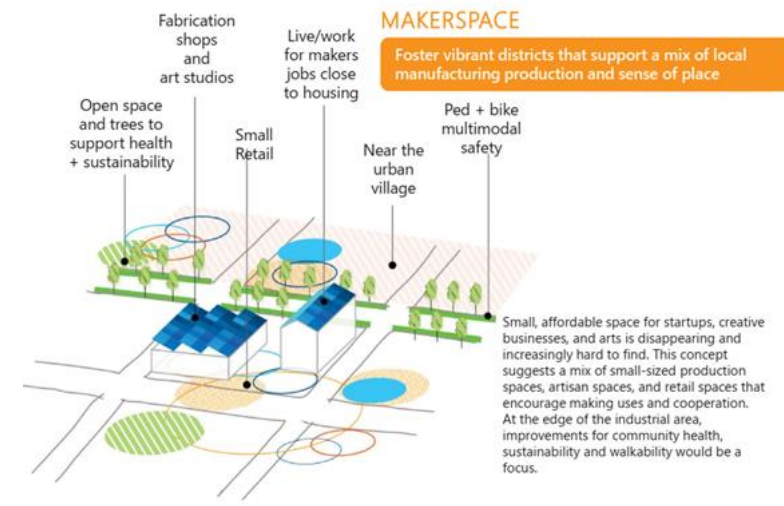
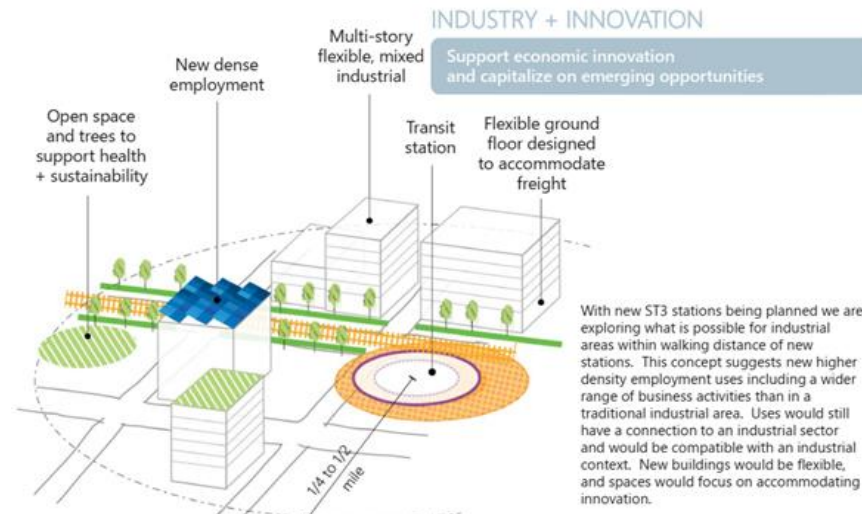
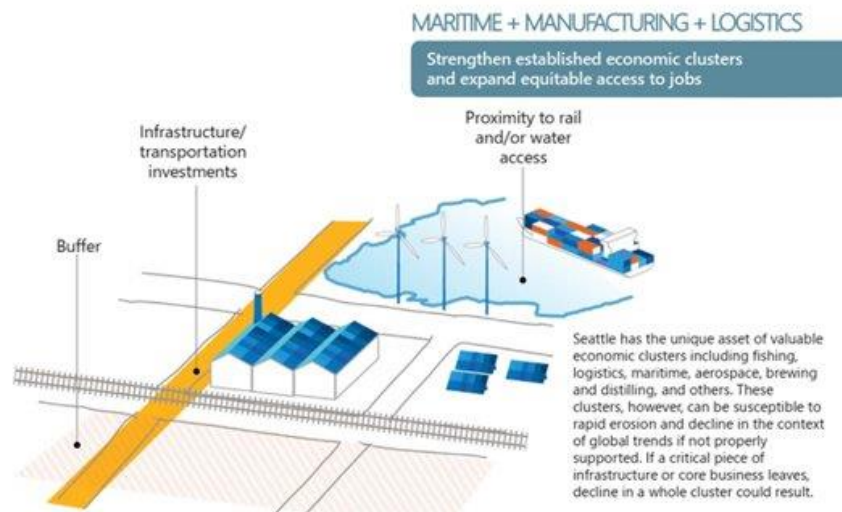
Support economic innovation
and capitalize on emerging opportunities

MAKERSPACE

Foster vibrant districts that support a mix of local
manufacturing production and sense of place

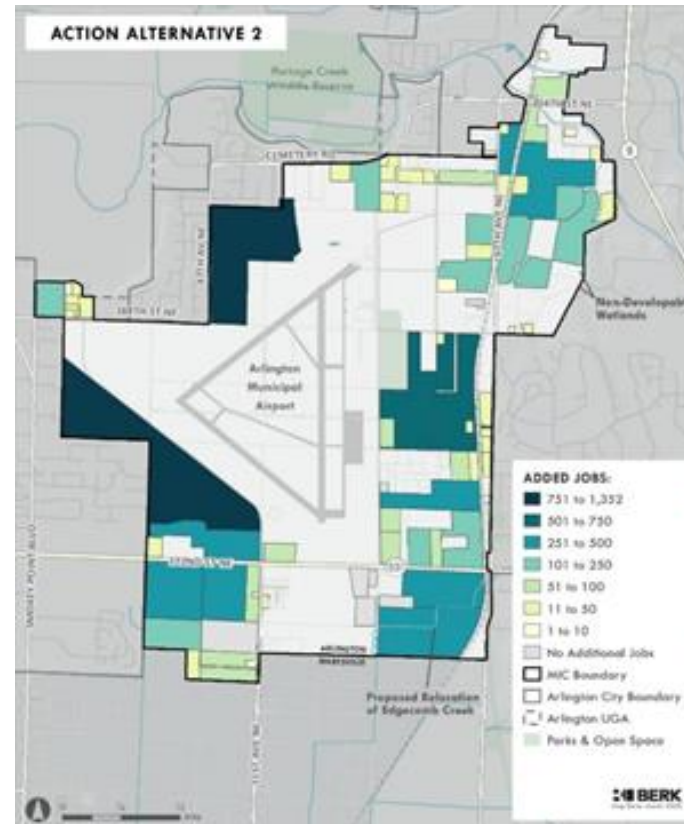
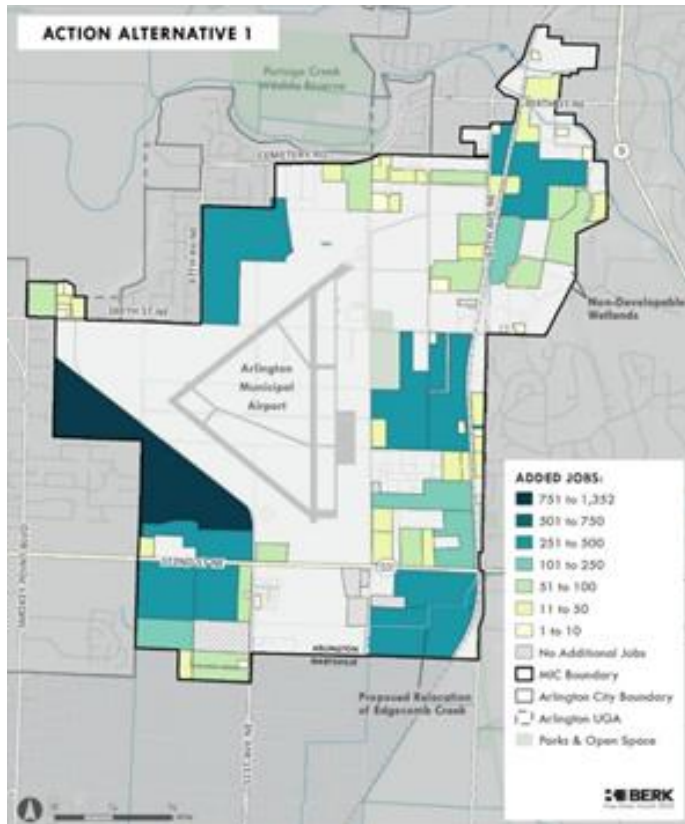
Examples

Seattle Maritime Strategy Concepts



Examples

Arlington-Marysville MIC Concepts



Discussion

What **concepts/big ideas** do you want to see
reflected in the alternatives?

Discussion

Having heard from others, what **themes**,
questions, or other **thoughts** do you have?

4. Next Steps

Next Steps

April 30

- Deadline to host a meeting in a box
- Online survey closes

May 13

- Community meeting

