

TIDEFLATS SUBAREA PLANNING

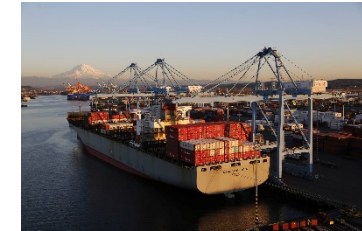
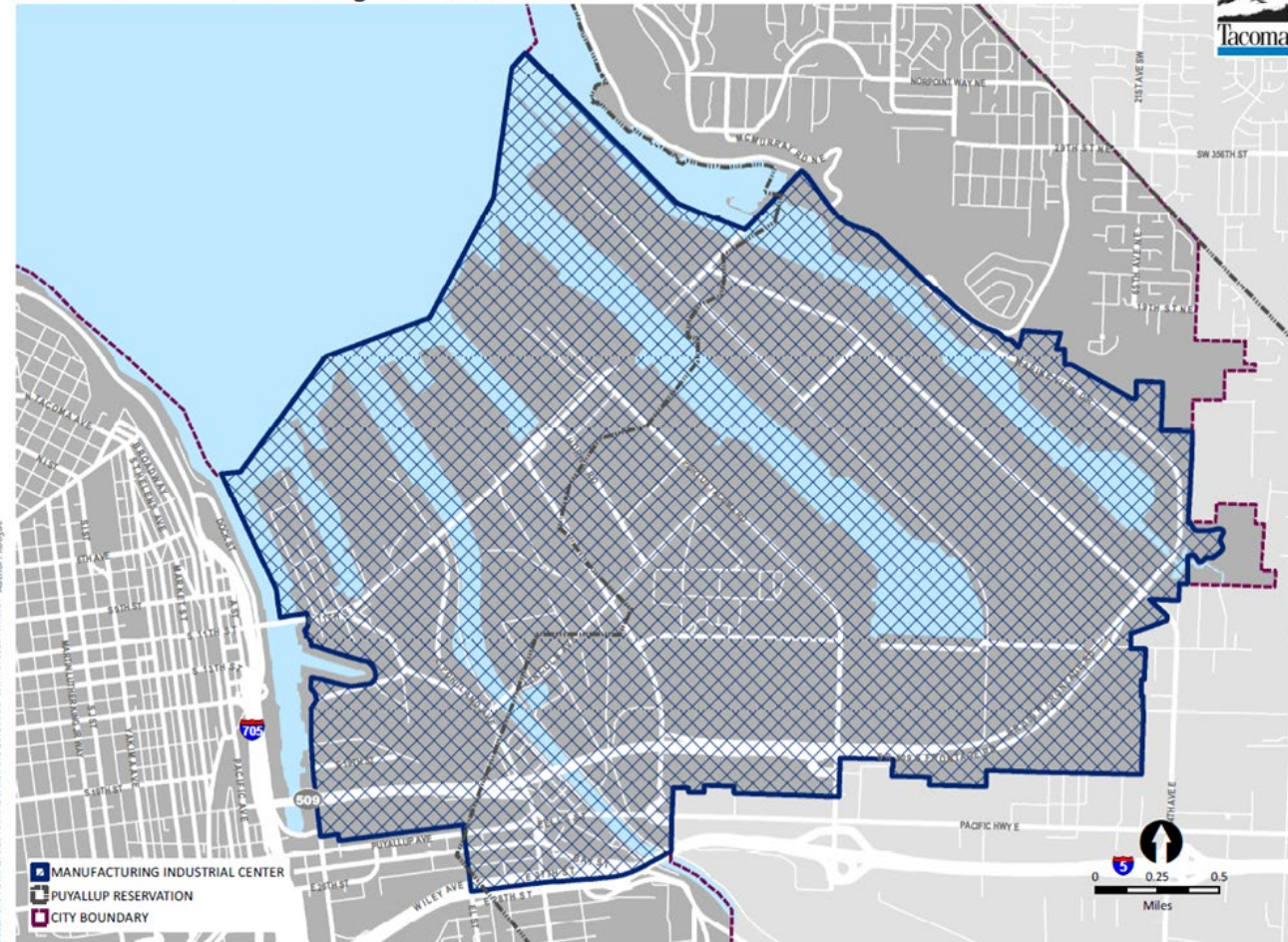
MEETING OBJECTIVES

- Establish a common understanding for the study area and what a Subarea Plan is;
- Impart appreciation for political complexity of this process;
- Set clear expectations for staff involvement and roles and responsibilities.

MANUFACTURING/INDUSTRIAL CENTER

City of Tacoma | Community and Economic Development

Port of Tacoma Manufacturing and Industrial Center

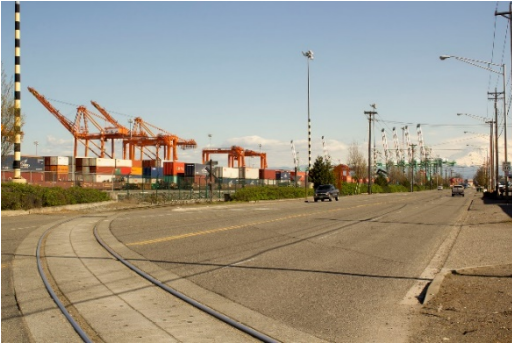


MANUFACTURING/INDUSTRIAL CENTER



- A designation established in 2002 in the Puget Sound Regional Council's VISION 2040 and the City of Tacoma's Comprehensive Plan.
- Ten MICs designated in the Puget Sound Region targeted for significant regional employment growth.
- Manufacturing and industrial uses are protected from encroachment.
- Designation provides regional funding priority for major transportation projects, e.g., Port of Tacoma Road, Taylor Way, SR 167, and freight projects

BENEFITS OF A SUBAREA PLAN



- Coordinated approach to development
- Improved predictability for permitting
- Increased eligibility for transportation funding
- Enhanced / streamlined environmental review
- Strategic capital investment

WHAT WILL THE PLAN ADDRESS?



Plan Concept or Vision

- Preservation of industrial land base
- Economic role of the Manufacturing and Industrial Center
- Relationship to Comprehensive Plan
- Relationship to adjacent areas

Environment

- Protection of sensitive areas management
- Air pollution and greenhouse gas emissions
- Contaminated soils
- Environmental risks and hazard areas, including sea level rise
- Opportunities for proactive environmental remediation

Land Use

- Employment growth targets
- Description of appropriate industrial and manufacturing uses
- Incompatible land uses
- Buffers for industrial uses and appropriate transitions
- Mitigation of aesthetic impacts

Economy

- Economic development and growth strategies for the region
- Maintain and expand family wage jobs
- Key sectors and industry clusters

Public Services and Facilities

- Capital plans and investments to meet targeted growth

Transportation

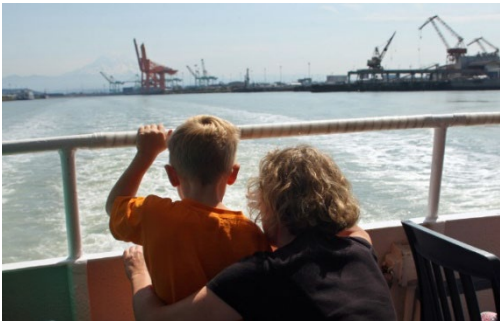
- Freight movement
- Employee commuting
- Transit and mode splits
- Priority projects
- Financing strategy
- Design standards

RESOURCES ONLINE

- www.cityoftacoma.org/tideflatsplan
- www.cityoftacoma.org/tideflatsinterim
- www.cityoftacoma.org/onetacoma
- www.psrc.org/centers



INTERGOVERNMENTAL AGREEMENT



- Resolution No. 40113
 - Established Funding Partners
 - Established an Inter-governmental Steering Committee
 - *City of Tacoma*
 - *Port of Tacoma*
 - *Puyallup Tribe of Indians*
 - *Pierce County*
 - *City of Fife*
 - Steering Committee Approved the Work Plan on Feb. 8, 2019

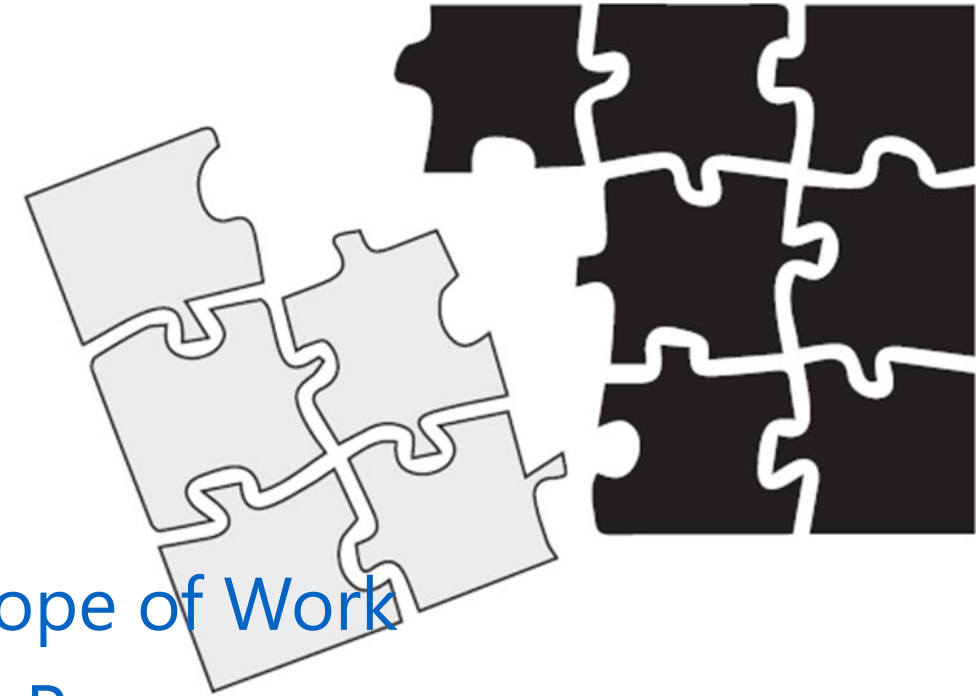
WORK PLAN OVERVIEW

What it is

- General Scope of Work
- Inter-governmental Coordination
- Review Periods
- Advisory Roles

What it isn't

- Detailed Scope of Work
- Community Process
- Intra-governmental Coordination
- Legislative Process
- Approval



WORK PLAN - PARTNERSHIPS

- Project Management Team
- Staff Leadership Team
- Steering Committee
- Tideflats Advisory Group
- Technical Advisors

STEERING COMMITTEE

City of Tacoma

- Mayor Woodards
- TBD

Port of Tacoma

- Commissioner McCarthy
- Commissioner Meyer

Puyallup Tribe

- Vice-Chair Sterud
- Councilmember Bryan

Pierce County

- Executive Dammeier
- Council Chair Richardson

City of Fife

- Mayor Roscoe
- Councilmember McClellan

PROJECT MANAGEMENT TEAM

Stephen Atkinson – City of Tacoma

Deirdre Wilson – Port of Tacoma

Andrew Strobel – Puyallup Tribe of Indians

Sean Gaffney – Pierce County

Steve Friddle – City of Fife

TIDEFLATS ADVISORY GROUP

Adjacent Jurisdictions	Designee	Appointing Body
City of Lakewood	CM Mike Brandstetter	Self
City of Sumner	Mayor Bill Pugh	Self
Joint Base Lewis McChord	Bill Adamson	Self
Neighborhoods	Designee	Appointing Body
Northeast Tacoma Neighborhood Council	Yvonne McCarty	Self
New Tacoma Neighborhood Council	Tom Ebenhoh	Self
South Tacoma Neighborhood Council	Joe Bushnell	Self
Business and Industry	Designee	Appointing Body
Port Tenant	Greg Unterbrink	Port of Tacoma
Tideflats-Non-Port	Tony Belot	City of Fife
	Andrew Troske/	
Energy Company	Troy Goodman	Self
Frederickson	Dave Manger	Pierce County
Labor	Designee	Appointing Body
ILWU Local 23	Jared Faker	Self
P.C. Building and Construction Trades	Mark Martinez	Self

Environmental	Designee	Appointing Body
Wildlife	Melissa Malott	Puyallup Tribe
Air Quality	Lexi Brewer	City of Tacoma
Water Quality	Joel Baker	Port of Tacoma
Climate Change Resiliency	Tarika Powell	Puyallup Tribe
Regional Economic	Designee	Appointing Body
TPC Chamber of Commerce	Tom Pierson	Self
TPC Economic Development Board	Bruce Kendall	Self
General Representation	Designee	Appointing Body
	Karen Zima	City of Fife
	Frank Boykin	City of Tacoma
	Tom Deming	Pierce County

PLANNING TASKS

1. Community Engagement Plan
2. Analysis of Existing Conditions/Establish Baseline
3. Visioning + Future Development Scenarios
4. Evaluate Future Alternatives
5. Develop Plan Draft
6. Draft Planned Action Environmental Impact Statement
7. Steering Committee Recommendation to Planning Commission + City Council
8. City Legislative Process

RELATED PROJECTS

HOMEWORK

By March 18th

- Email/Distribution Lists
- Related Projects
- Technical Experts

Late March/April

- Individual Meetings