

TACOMA TIDEFLATS

SUBAREA PLAN

Steering Committee

August 12, 2021 | 2:00 pm | Zoom



Meeting Agenda

Communication Items

- Progress Report (through July 2021)
- Next Milestone and Upcoming Schedule
- Budget Update

Discussion Item

- Visioning Report Out

Upcoming Steering Committee Meetings

Milestone Progress Report

Community Visioning – Focus of today's discussion

- Visioning Report documents methods of engagement, public participation, and engagement outcomes

Baseline Conditions Report

- Steering Committee reviewed on March 11, 2021
- Documents existing policies, programs, regulations as well as baseline conditions for topics to be addressed in the Environmental Impact Statement.

Public Engagement Plan

- Steering Committee Reviewed and Approved on July 9, 2020

Next Milestone: Alternatives for Plan/EIS

Milestone: Steering Committee recommends development alternatives for review in the EIS

- Alternatives establish a range of actions and outcomes based on different policy choices.
- No change alternative: Based on existing plans, programs, regulations

Alternatives → Environmental Impact Statement (EIS):

- Information and analysis tool
- Provides policymakers with information on the likely environmental outcomes of policy choices

Next Milestone: Alternatives for Plan/EIS

Schedule for milestone completion:

- **September/October:** Tideflats Advisory Group Review and Feedback
- **November:** Steering Committee Reviews Draft Alternatives
- **December:** Steering Committee Recommends Alternatives
- **Winter:** Tacoma Planning Commission review
- **Spring:** Tacoma City Council review and finalization

Overall Process Status

Milestones

- ✓ Public Engagement Plan
- ✓ Baseline Conditions Analysis
- ✓ Community Visioning
- ☐ Plan and EIS Alternatives (in progress)
- ☐ Draft Plan and Draft EIS
- ☐ Plan Recommendation

Engagement Update

- ✓ Steering Committee (ongoing)
- ✓ Tideflats Advisory Group (ongoing)
- ✓ Community Visioning (completed)
- ☐ Public Comment on Proposed Alternatives
- ☐ EIS Public Scoping
- ☐ Comments on Draft EIS

Budget Update

Funding Partnership:

- City of Tacoma: \$500,000
- Port of Tacoma: \$500,000
- Puyallup Tribe of Indians: \$200,000

Total Project Budget of \$1.2M

Budget Update

Contract	Budget	Expended	Remaining
Gordon Thomas Honeywell Steering Committee facilitation	\$100,000	\$30,000	\$70,000 – contract closed
BERK Plan and EIS	\$1,074,938	\$497,389	\$577,547
Uncontracted Direct payment for public notice, facility rentals, online advertising	\$25,000	\$300	\$24,700

Budget Amendment: \$61,000 added from uncommitted funds to complete public engagement tasks, due to impacts from COVID-19 pandemic

Discussion:

Visioning Report

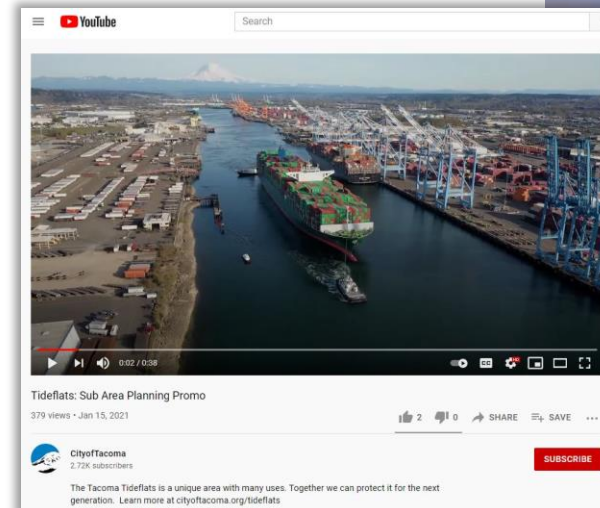
- Engagement Efforts
- What We Heard
- Related Efforts
- How Input will Shape the Alternatives

Engagement Efforts

January – May 2021

Outreach & Advertising

- FAQ sheet
- Emails to project listserv
- Project website
- Social media
- Press releases
- Promotional video



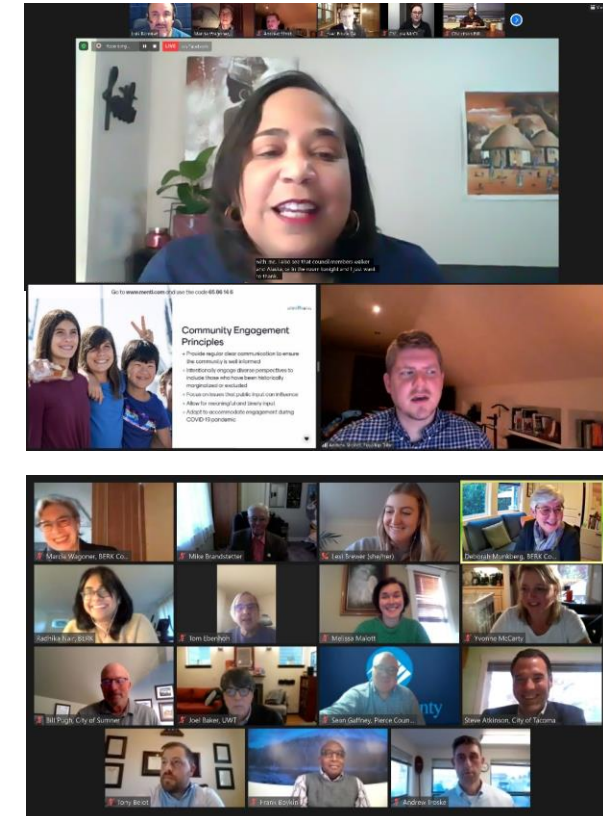
Equity Considerations

- **Interpretation** in Spanish via Zoom was available at the two largest public meetings, the Community Kickoff and Visioning Report Out.
- **Mix of methods** including real-time meetings and online survey
- **Adaptation** of public engagement methods to public health guidance for COVID-19
- **Meeting accommodations** available by request

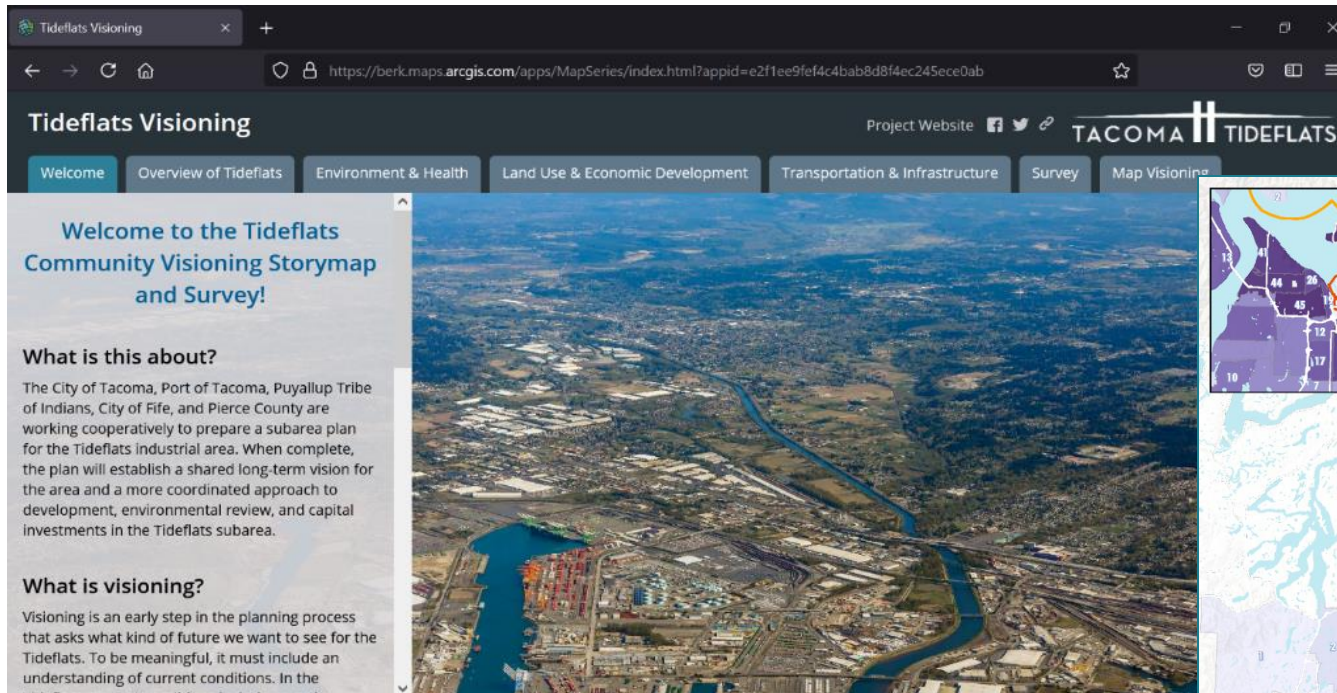


Engagement Methods and Participation

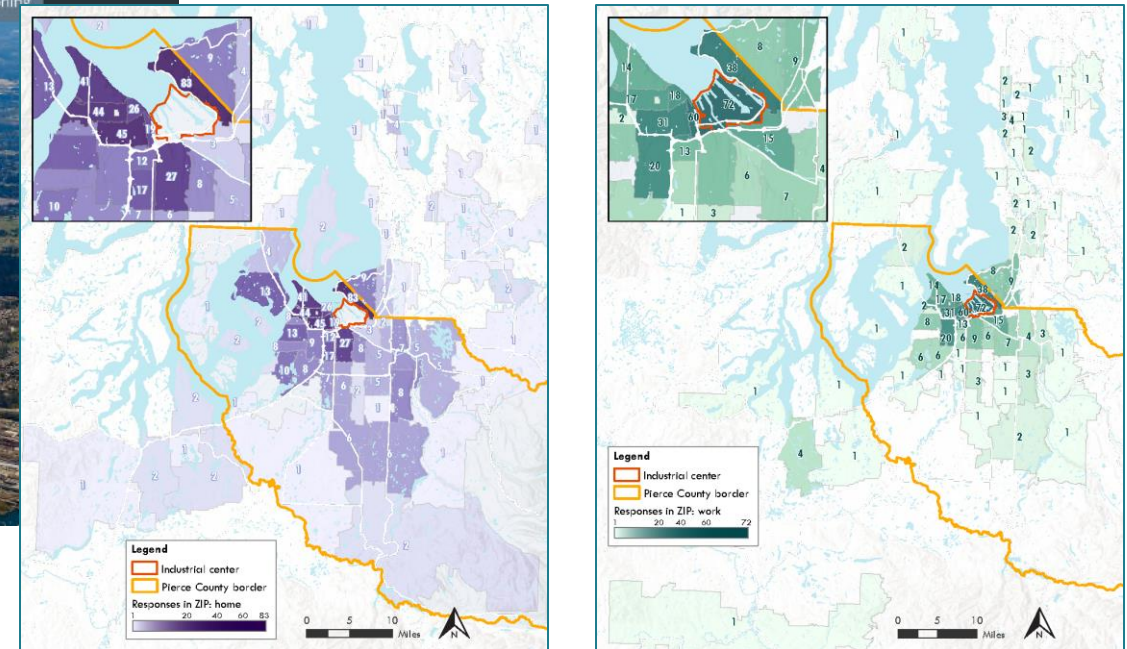
Engagement Type	Participants
StoryMap & Online Survey	602
5 TAG Meetings	19
1 Community Kickoff	56
2 Focus Groups	27
18 Meetings in a Box	310
3 Panels	87
1 Community Report Out	13
TOTAL	1114



Online Survey & StoryMap: 602 responses



StoryMap & Survey

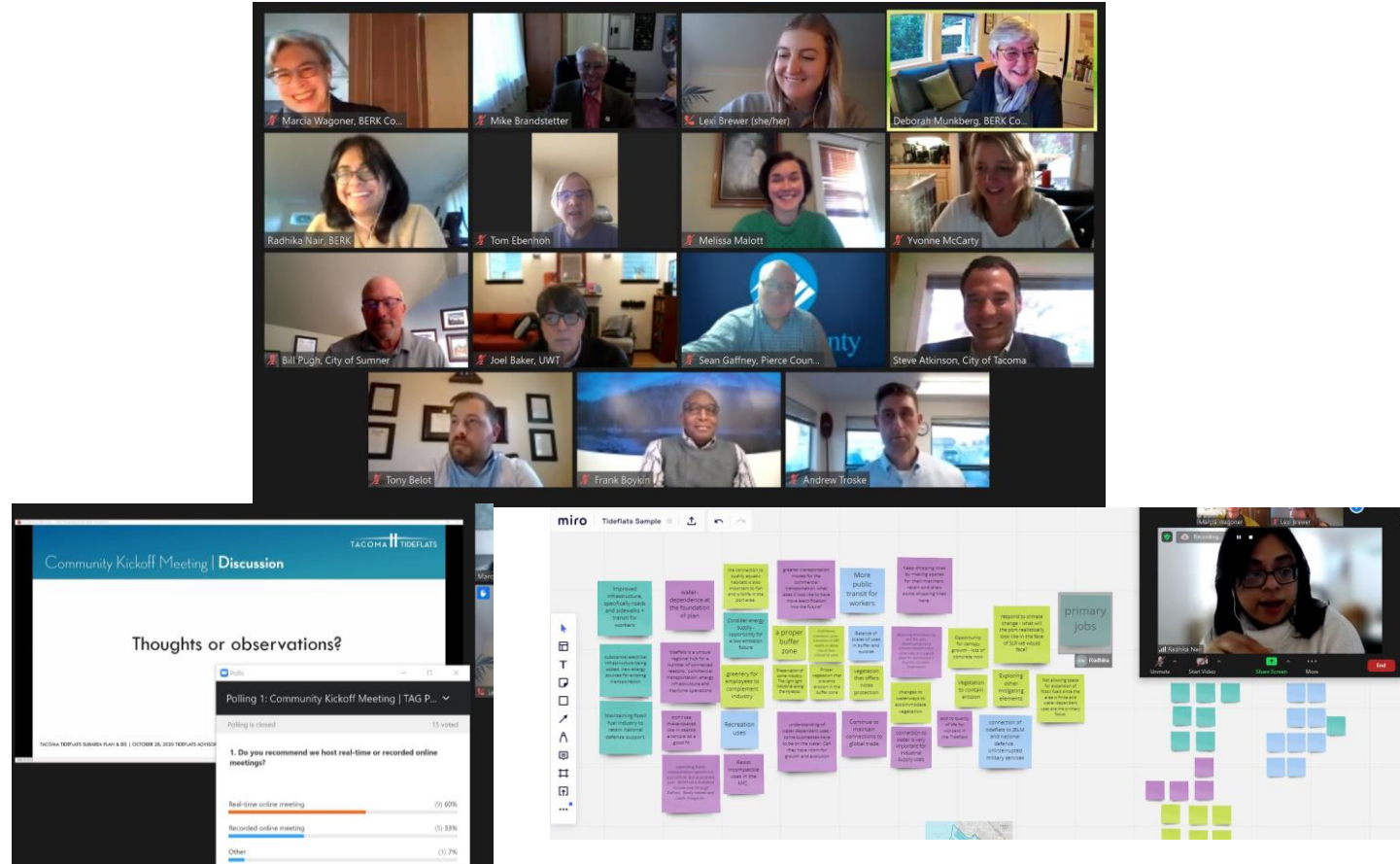


Respondents' home (left) and work (right) zip codes

Tideflats Advisory Group: 19 members

Visioning Meetings

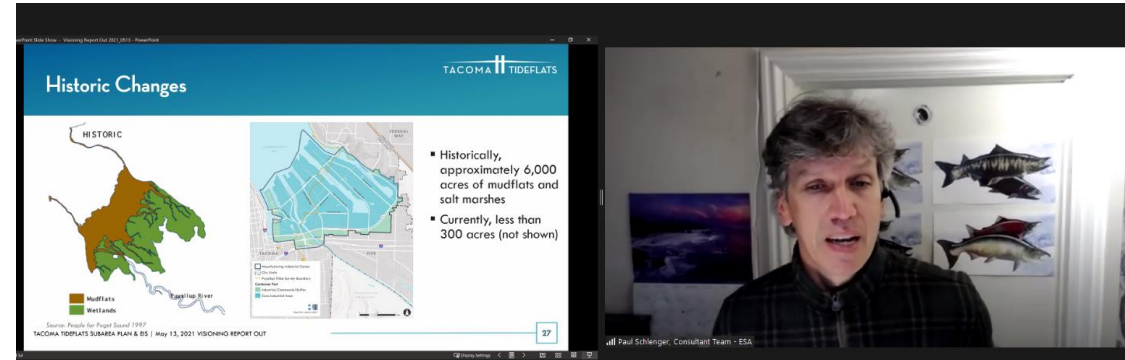
- Jan 2021
- Feb 2021
- Apr 2021



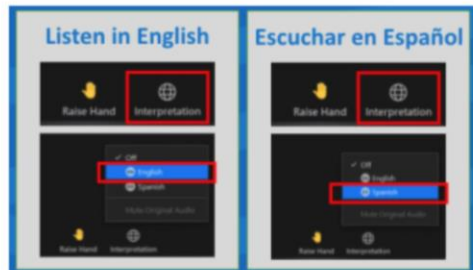
Community Meetings: 70 attendees

Kickoff: Feb 2021

Report Out: May 2021



Para escuchar en vivo a la intérprete en español, presione el botón "Interpretation"



Go to www.menti.com and use the code 65 86 14 6

What is your favorite feature in the Tideflats?

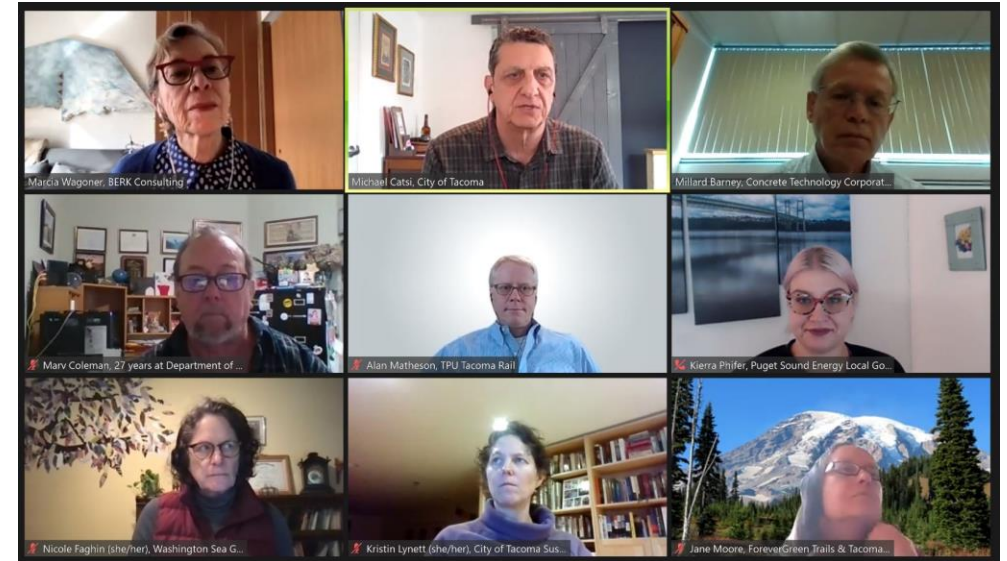


And then when our slides

Focus Groups & Panels: 114 attendees

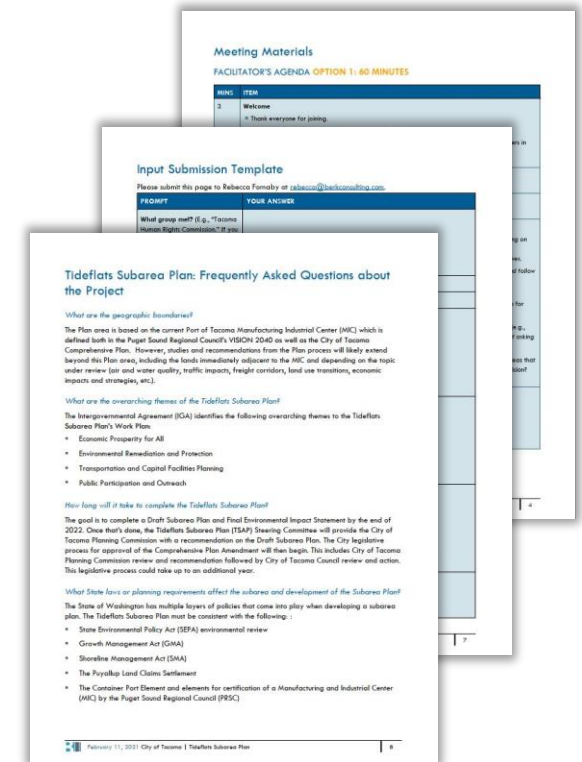
March 2021

- **3 Panels:** Land Use and Economic Development, Environment and Health, Transportation and Infrastructure
- **2 Focus Groups:** A mix of interests in economic development, natural environment, transportation, and capital facilities planning



Meetings in a Box: 310 attendees, 18 meetings

- Tacoma Transportation Club
- Puyallup Tribe of Indians Planning Commission
- Puyallup Tribe of Indians Fishing Commission
- Propeller Club of Tacoma
- Sustainable Tacoma Commission
- Pierce County Council
- Fife/Milton/Edgewood Chamber of Commerce
- Pierce County Green Drinks
- Citizens for a Healthy Bay
- Puyallup/Sumner Chamber of Commerce
- Lakewood Chamber of Commerce
- Citizens for a Healthy Bay Policy and Technical Advisory Committee
- Northeast Tacoma Neighborhood Council
- Tacoma Transportation Commission
- Puyallup River Watershed Council
- Fife Planning Commission
- Fife City Council

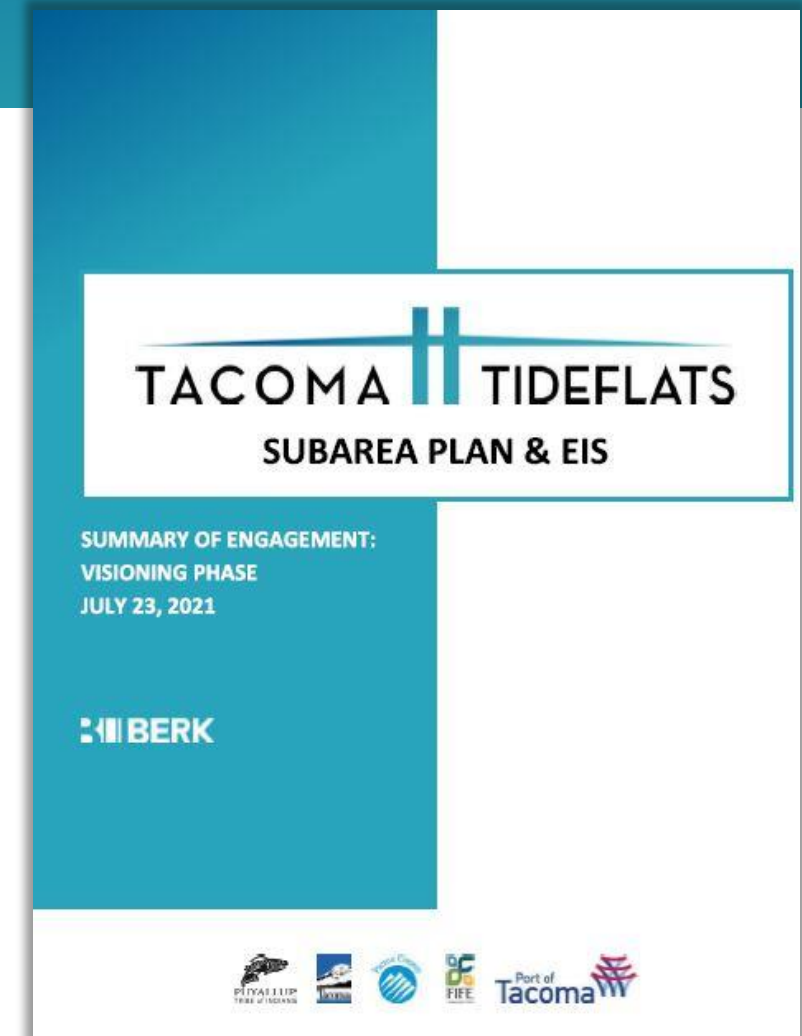


What We Heard

For further reading . . .

Find **more detail** in the Engagement Summary:

- Community Input: Methodology of Analysis
- Survey: Methodology of Analysis
- Meetings: Methodology of Analysis
- Respondent Demographics
- Further detail about input



Categories of Input

- Favorite Features
- Strengths and Challenges
- Opportunities and Barriers
- Land Uses
- Economic Development
- Transportation
- Natural Resources

Strengths and Challenges

STRENGTHS

Survey Respondents

- Natural habitat (56%)
- Port of Tacoma shipping, trade activity, and jobs (48%)
- Living-wage jobs (29%)

Meeting Participants

- Natural deep-water port
- Proximity to on-land transportation
- Jobs

CHALLENGES

Meeting Participants

- Complex interests
- Community divisiveness
- Incohesive uses



Opportunities and Barriers

OPPORTUNITIES

Survey Respondents

- Restoration and cleanup of natural areas (51%)
- Preserving and strengthening jobs (38%)
- Transitioning away from fossil fuel facilities (36%)

Meeting Participants

- Transitioning away from fossil fuels
- Increasing clean industry
- Addressing climate change

BARRIERS

Meeting Participants

- Lack of community understanding
- Poor transportation/infrastructure
- Politics



Land Use Priorities

INDUSTRIAL USES

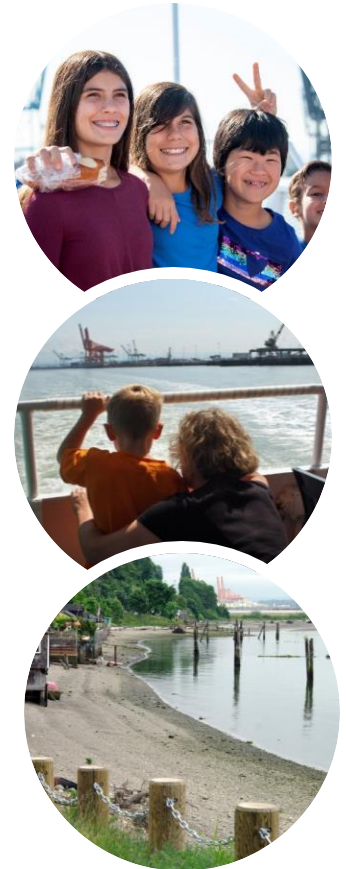
Survey Respondents

- Green industrial uses (59%)
- Container shipping and international trade (45%)
- Port maritime uses (39%)

COMPLEMENTARY USES

Survey Respondents

- Cultural, educational, and maritime heritage facilities (36%)
- Small-scale manufacturing spaces for fabrication or production (35%)
- Shoreline public access and recreation facilities (35%)



Economic Development Priorities

Survey Respondents

- Environmental remediation (58%)
- Investments in infrastructure to expand port activities (45%)
- Investments in transportation improvements (37%)



Transportation Concerns & Improvements

CONCERNS

Survey Respondents

- Traffic congestion or backups (52%)
- Safety concerns with trains and trucks (32%)
- Limited options for walking (26%)

IMPROVEMENTS

Survey Respondents

- Add biking options (70 responses)
- Add transit options (65 responses)
- Add walking options (65 responses)



Characteristic Considerations

MAINTAIN

- *Meeting Participants*
 - Environmental protection, clean industry
 - Jobs, business, economic development

IMPROVE

- *Meeting Participants*
 - Environmental contamination, water quality, air quality
 - Reduce fossil fuels, increase renewable energy
 - Jobs

Natural Resources

MITIGATIONS

Survey Respondents

- Provide more cleanup of contaminated areas (52%)
- Provide more protection and enhancement of salmon, shellfish, and marine life (39%)
- Green industrial development standards to promote sustainability and reduce GHG emissions (31%)

VALUES

Survey Respondents

- Protect natural resources (64%)
- Serve cultural purposes (39%)
- Provide recreational opportunities (38%)



Favorite Features of the Tideflats

Skyline/Views

- Olympic Mountains/Mt. Rainier
- Cranes
- Container ships and recreational boating on Commencement Bay
- Topography

Access/Recreation sites

- Dick Gilmur Kayak Launch

Habitat sites

- Gog-le-hi-te Wetland
- Place of Circling Waters

Cultural sites and activities

- Canoe Journeys
- Place of Circling Waters



Related Efforts

Port of Tacoma Strategic Plan

The Port of Tacoma commission adopted the 2021-2026 Strategic Plan in April, with the following Mission:

The Port of Tacoma makes strategic investments in our harbor and community to promote prosperity, trade and jobs, while protecting and enhancing our environment.

Methods: Survey, interviews, online open house, direct presentations and workshops

Participation: 450 survey responses, 41 interviews, 3800 online engagements

The plan includes five foundational goals:



Puyallup Tribe Comprehensive Land Use Plan

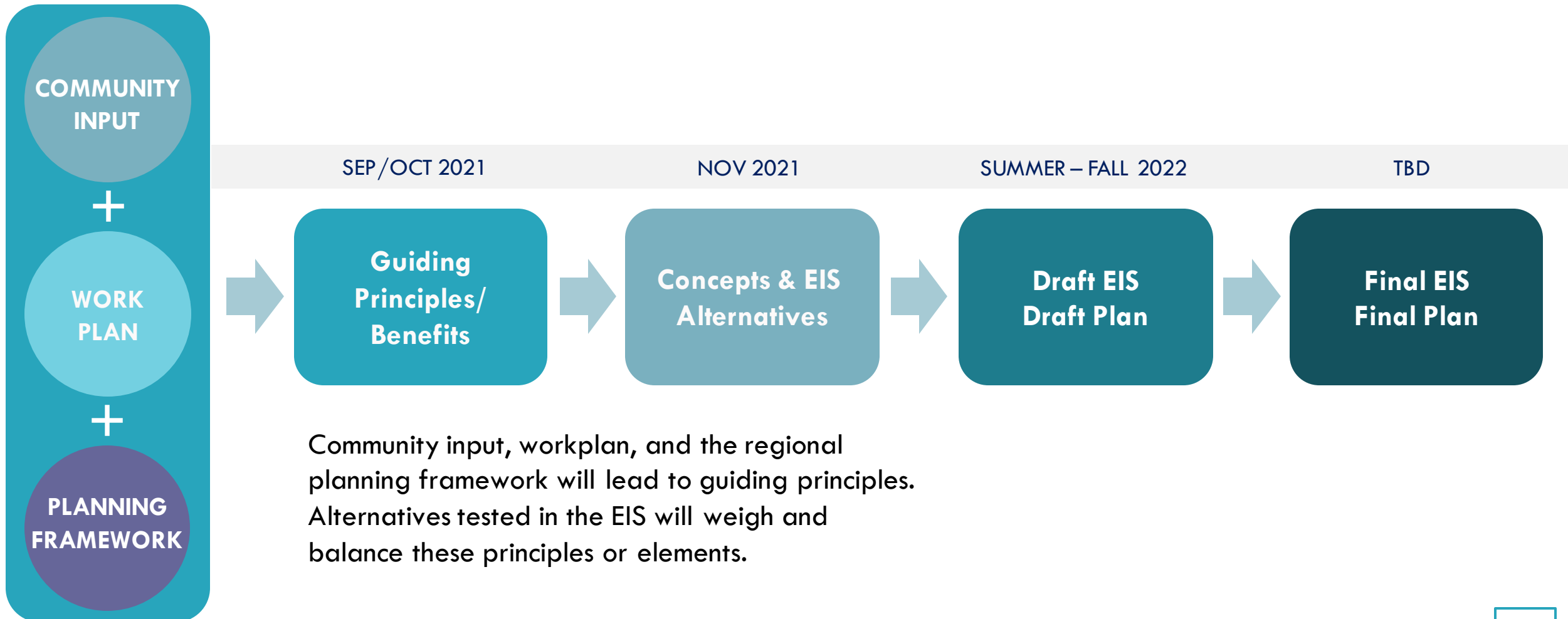
- **Engagement:** July 2021 to November 2021
- **Methodologies:** Survey, engagements meetings with tribal members, tribal committee meetings, public comment period for draft plan
- **Participation:** In process
- **Themes of input (to date):**
 - **Cultural spaces:** Tribal lands must be preserved to allow for cultural practices and traditional way of life.
 - **Current development does not support fishery:** Treaty fishing rights under immense pressure as fishery yields continue to get smaller due to water quality and fishery habitat impacts.
 - **Climate change:** Climate change will greatly affect tribal operations and our traditional way of life. Gathering spaces, traditional activities, traditional foods, sacred sites all under threat.

City of Tacoma Climate Action Plan

- **Engagement:** September 2020 to June 2021 (Phase 1)
- **Methodologies:** Climate ambassadors, surveys, environmental justice leaders workgroup
- **Participation:** Approximately 500 people
- **Themes of input:**
 - **Climate priorities:** Low carbon and active transportation systems, access to green spaces, healthy ecosystems
 - **Barriers to sustainability:** Current social values, lack of incentives, lack of government support
 - **Climate impacts of concern:** Air quality, susceptibility to wildfires, impact to wildlife and ecosystems, disproportionate impacts

How Community Input will Shape the Alternatives

Community Input and Planning Phases



Upcoming Steering Committee Meetings

- November: Review Draft Plan/EIS Alternatives
- December: Recommend Plan/EIS Alternatives