

# PARKING SUMMARY

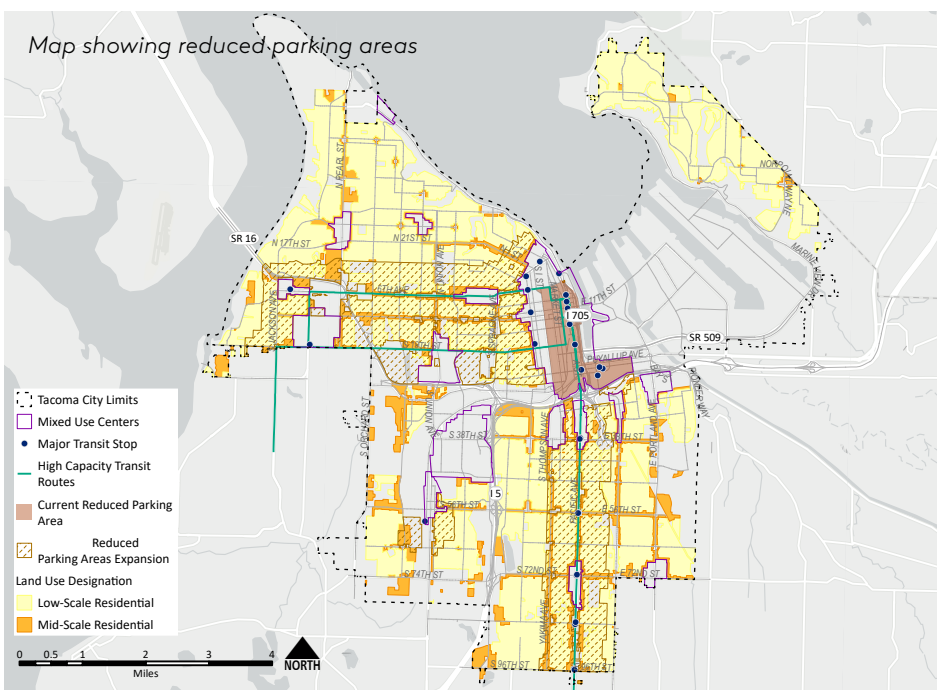


Home in Tacoma  
Webpage

## Overview

Home In Tacoma includes reduced parking requirements for new housing, making it easier to fit multiple elements on to a lot, encourage walkable neighborhoods, promote transportation choices, allow flexibility for developers, and lower construction costs.

- Depending on the zone, parking requirements range from 1 required parking spaces per dwelling to 0.5 spaces per dwelling.
- Expanded Reduced Parking Area near transit, with no parking requirements, consistent with state legislation and City goals.
- No parking maximums are included, so developers can build more parking than minimum requirements.
- A covered bike parking space is required for every unit, as well as some short-term bike parking for visitors.



Illustrative diagram showing parking area

◀ Parking is reduced through the Reduced Parking Area Expansion - 1/2 mile walking distance from major transit stops. Includes Pac Ave, transit lines #1, 2 and future LINK extension. Applies only to residential zoning districts.

Full interactive map available at [Home in Tacoma Project: AHAS Planning Actions - City of Tacoma](#)

	UR-1	UR-2	UR-3
<b>Minimum Parking Requirements</b>	<ul style="list-style-type: none"> <li>• Baseline: 1 stall per unit</li> <li>• Bonus 1: None for bonus units</li> <li>• Bonus 2: None</li> </ul>	<ul style="list-style-type: none"> <li>• Baseline: 0.75 per unit</li> <li>• Bonus 1: None for bonus units</li> <li>• Bonus 2: None</li> </ul>	<ul style="list-style-type: none"> <li>• Baseline: 0.5 per unit</li> <li>• Bonus 1: None for bonus units</li> <li>• Bonus 2: None</li> </ul>
<b>Parking Reductions</b>	<ul style="list-style-type: none"> <li>• No parking required in Reduced Parking Areas (1/2-mile walking distance from major transit stops)</li> </ul>		
<b>Driveway Widths</b>	<ul style="list-style-type: none"> <li>• 9' min: 1 stall</li> <li>• 10' min: 1- 8 stalls</li> <li>• 16' min: 9-20 stalls</li> <li>• 20' min: 21+ stalls or for 2-20 stalls at arterials</li> </ul>		
<b>Bike Parking</b>	<ul style="list-style-type: none"> <li>• 1 long-term stall per unit</li> <li>• 1 short-term U-rack (2 stalls) per site (existing is 1 per 20 units)</li> <li>• Allow long-term bike parking within dwelling units</li> </ul>		

