

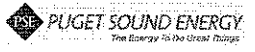
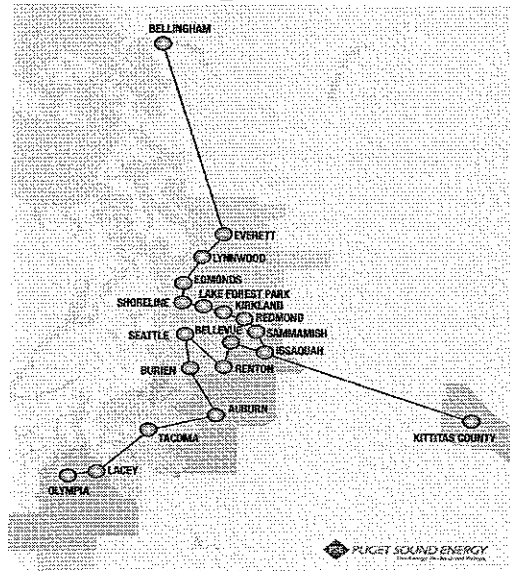


Partnering with Green Communities
"A Green Light to Action"

Bill Younger
 Manager, Business Energy Management



"A Green Light to Action"



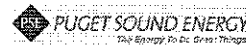
Residential Programs

NORTHWEST



Programs for All Customers

- ◆ New Construction
 - ◆ Implement ENERGY STAR® Homes Northwest program
- ◆ Manufactured Homes
 - ENERGY STAR® qualified manufactured homes
 - ◆ \$300 electrically heated manufactured home
 - ◆ \$150 gas heated manufactured home
- ◆ Low Income Weatherization
 - ◆ Funding of cost-effective home weatherization measures
 - ◆ Free service based on monthly income



Residential Programs



YOUR REFRIGERATOR NEEDS A RETIREMENT PLAN.

- Programs for all Customers
 - ◆ Contractor Referral Service
 - ◆ Pilot Programs
 - ◆ Refrigerator Decommissioning – remove second refrigerators
 - ◆ Tankless Water Heater Pilot
 - ◆ Heat Pump Maintenance Pilot
 - ◆ Advanced heat pump diagnostic protocol (CheckMe!®)
 - ◆ Multifamily Fuel Choice Pilot
 - ◆ Increase the installation of energy efficient gas heating equipment



Residential Programs

Programs for Electric Customers

- ◆ Heating Equipment
 - ◆ Manufactured Housing Energy Retrofit
 - ◆ Sealing supply ducts and targeted conversions of electric furnaces to air-source heat pumps
- ◆ Heat Pump Rebate
 - ◆ \$250 rebate for heat pumps with 9 or greater HSPF
- ◆ Weatherization
 - ◆ Multifamily Weatherization – existing
 - ◆ Install energy efficient measures in structures with five or more units
- ◆ Lighting
 - ◆ ENERGY STAR® Qualified Lighting
 - ◆ \$20.00/\$10.00 ENERGY STAR Light Fixtures
 - ◆ \$2.00 ENERGY STAR Compact Fluorescent Bulbs
- ◆ Appliances
 - ◆ ENERGY STAR® qualified clothes washers and dishwashers
 - ◆ \$35.00 ENERGY STAR Clothes washer
 - ◆ \$20.00 ENERGY STAR Dishwasher



Residential Programs

Programs for Natural Gas Customers

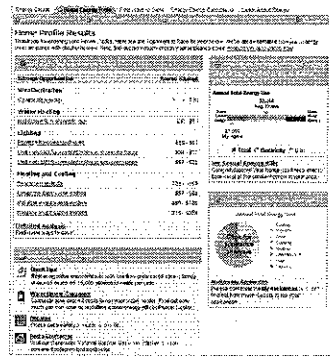
- ◆ Heating Equipment
 - ◆ High efficiency, ENERGY STAR® qualified natural gas furnace in existing and new homes
 - ◆ \$250 Rebate for furnace over 90% AFUE
 - ◆ Water Heating
 - ◆ \$40 Rebate for high efficiency natural gas water heaters
 - ◆ Energy factor of 0.62 or higher
 - ◆ Weatherization
 - ◆ Weatherization measures such as insulation and duct sealing in Natural Gas Single Family
- Covers wall, floor, attic, duct and duct seal up to \$1100



Energy Information

- On-line tool ... "My PSE Account"
 - ◆ www.pse.com
 - ◆ Check billing history
 - ◆ Track daily energy use
 - ◆ Find ways to lower bills
 - ◆ Download rebate forms

- Energy Advisors
 - ◆ 1-800-562-1482
 - ◆ Educate customers on ways to save
 - ◆ Helps customers make informed choices about energy efficiency
 - ◆ Information and brochures on current PSE rebates and promotions



Business Energy Management Programs

Custom Grants

- ◆ New and existing buildings
- ◆ Grants up to 70% of project cost
- ◆ Pre-authorization always required
- ◆ Electric Incentive
 - ◆ Must be a PSE electric customer
- ◆ Gas Incentive - Must be a PSE natural gas customer
 - ◆ Natural gas transportation customers are NOT eligible to receive conservation incentive funding



Business Energy Management Programs

Custom Grants

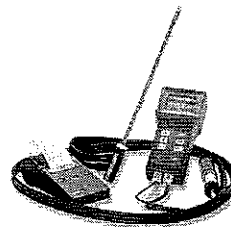
Rebate Programs

- ◆ Commercial Solid Door Refrigerators
- ◆ CEE Tier 2 Package Rooftop Units
- ◆ Variable Speed Drives / ECM Motors
- ◆ Programmable Thermostats
- ◆ Portable Classroom Controls
- ◆ Boiler Tune-up
- ◆ Pre-rinse Sprayheads
- ◆ Vending Machine Controllers (Revised)
- ◆ Premium HVAC Maintenance
- ◆ Commercial Washing Machines
- ◆ Laundry Water Heaters and Boilers



Boiler Tune-up Program

- One Time Rebate - 100% of Cost - Maximum \$600
 - ◆ 300 MBH Minimum
 - ◆ Power Burner
- Consists of:
 - ◆ Verify PSE non-residential Gas Customer
 - ◆ Perform pre-test across the range of load
 - ◆ Tune Boiler - Adjust Linkage
 - ◆ Perform post-test across the range of load
 - ◆ Send in application with printed test results
- Pre-approval not required
- If energy saving measures identified as a result of tune-up, they may be eligible for a grant



Business Energy Management Programs

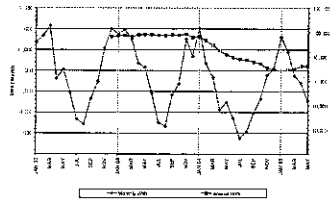
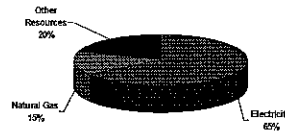
Custom Grants

Rebate Programs

Resource Conservation

Manager

- ◆ Focus on occupant behavior / O&M
- ◆ Typical 10%-15% Savings
- ◆ Guarantee savings will cover salary
- ◆ 25% Funding of 1st Year RCM
- ◆ Resource tracking software
- ◆ Education and training support



Business Energy Management Programs

Custom Grants

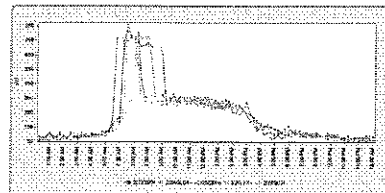
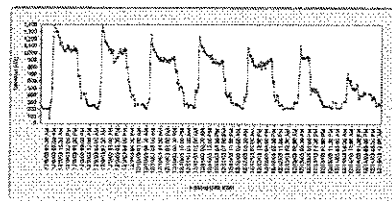
Rebate Programs

Resource Conservation

Manager

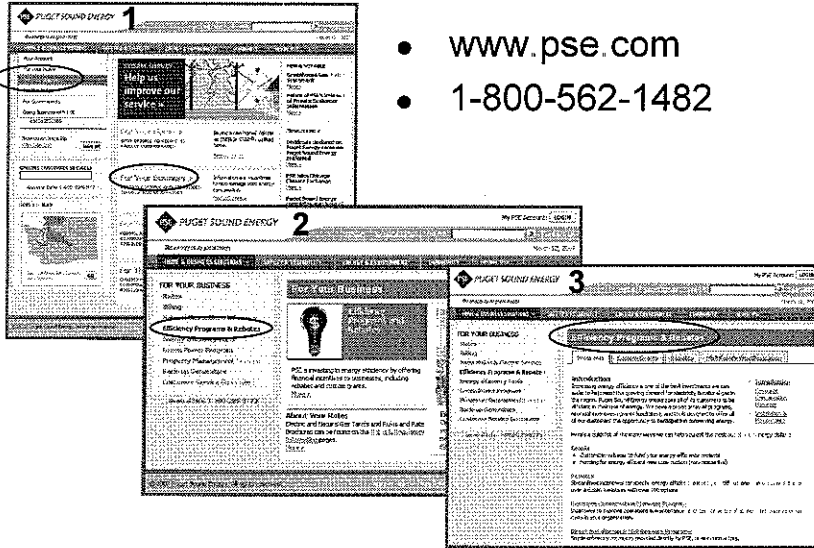
Energy Interval Service

- ◆ View kW for 15 minute or longer
- ◆ Compare against other channels
- ◆ Identify and correct operational trends and anomalies



For More Information

- www.pse.com
- 1-800-562-1482



Thank You!

Bill Younger, CEM
Energy Efficiency Services
425-456-2502
bill.younger@pse.com

